

# Meet the Bentley

QUICK POSSESSION HOME IN EDMONTON  
8929 ELVES LOOP NW EDMONTON, ALBERTA



DUPLEX  
COLLECTION

1705 SQ.  
FT.

3

2.5



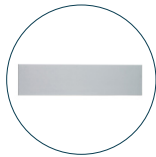
## This home's interior palette is the following:



LVP:  
Mikita



Cabinets:  
Free Spirit



Backsplash:  
Eksa Island  
White Glossy



Quartz Countertops:  
Diavik



Carpet:  
Sand Martin



Paint:  
Summit

## This home features the following:

- Level 1 kitchen upgrade complete with crown moulding, island extension, 42" upper cabinets with step above and one pots & pans drawer
- Exterior side entry to basement
- Rear pressure treated deck

## Standard features:

- BUILT GREEN® certified home
- Stainless steel appliances
- Thermally fused laminate cabinets
- Luxury vinyl plank throughout entire main floor and second floor wet areas
- Please see your Area Manager for the complete list of standard features

## You can purchase this home for:

\$

including home, lot and GST

## Home availability:



## For more information:



**Anabela daPonte-Cordeiro**  
EDMONTON AREA MANAGER

T: 780-756-8515  
E: [edgemont@excelhomes.ca](mailto:edgemont@excelhomes.ca)

**EXCEL  
HOMES**

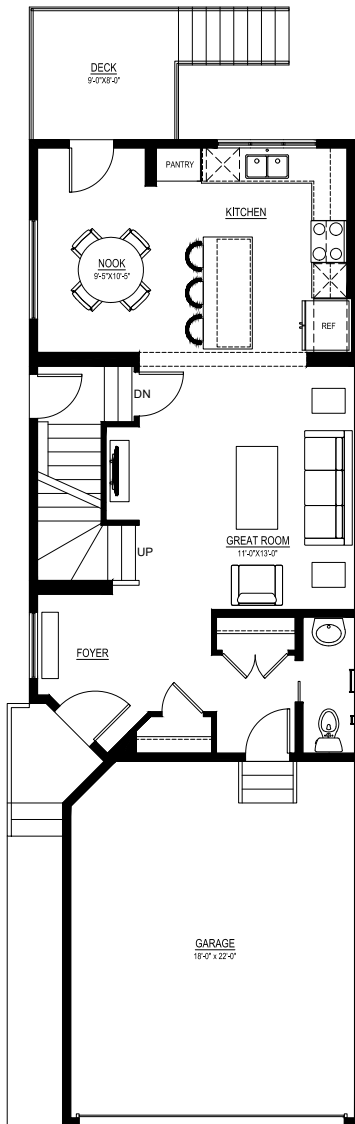
..... Simplifying your journey home.

# Meet the Bentley

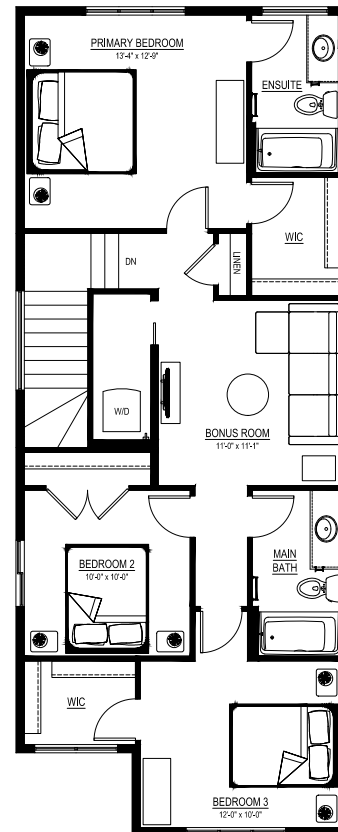
QUICK POSSESSION HOME IN EDMONTON 8929 ELVES LOOP NW

## Floor plans

MAIN FLOOR  
740 SQ.FT.



SECOND FLOOR  
965 SQ.FT.



For more  
information.

Anabela daPonte-Cordeiro  
EDMONTON AREA MANAGER

780-756-8515  
EDMONTON@EXCELSHOMES.CA

EXCELSHOMES.CA

This floorplan represents one version of this home and measurements are approximate. The square footage, measurements and layout may vary based on the elevation and/or lot. All elevations shown are artist's concept only and will vary by community. The builder reserves the right to make modifications or substitutions should they be necessary. All plans, options, dimensions, specifications, materials and drawings are subject to change without notice. E.&O.E