

Meet the Bentley

QUICK POSSESSION HOME IN EDMONTON
3350 ERLANGER BEND NW EDMONTON, ALBERTA


 DUPLEX COLLECTION
 1552 SQ. FT.
3 
2.5 



This home's interior palette is the following:

					
LVP: Morning Splendour	Cabinets: Sheer Beauty	Backsplash: Matte White	Quartz Countertops: Cystal Crescent	Carpet: Weathered	Paint: Summit

This home features the following:

- Level 1 kitchen
- Exterior side entry to basement
- Basement suite rough-in (one bedroom)
- Double car garage

Standard features:

- BUILT GREEN® certified home
- Stainless steel appliances
- Thermally fused laminate cabinets
- Luxury vinyl plank throughout entire main floor and second floor wet areas
- Please see your Area Manager for the complete list of standard features

You can purchase this home for:

\$

including home, lot and GST

Home availability:
















For more information:



Anabela daPonte-Cordeiro
EDGEMONT AREA MANAGER

T: 780-278-9143
E: edgemont@excelhomes.ca



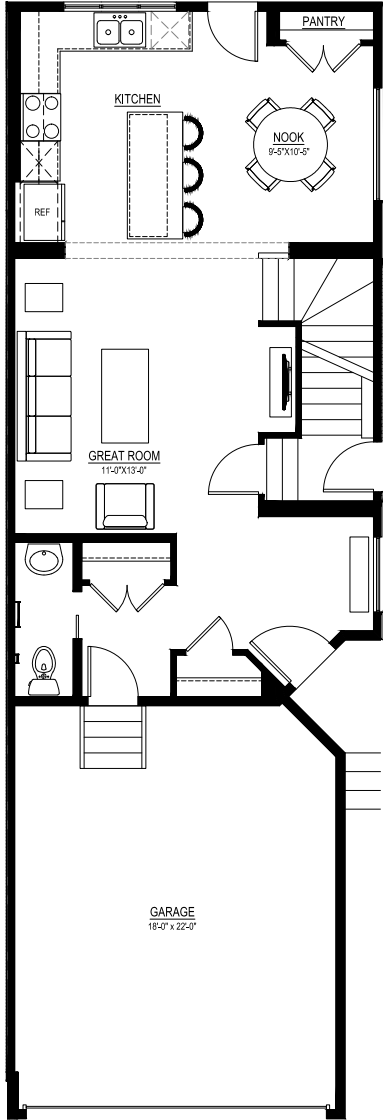
Simplifying your journey home.

Meet the Bentley

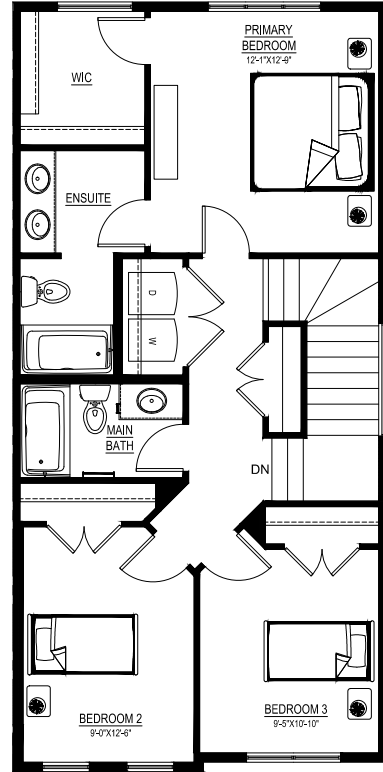
QUICK POSSESSION HOME IN EDMONTON 3350 ERLANGER BEND NW

Floor plans

MAIN FLOOR
737 SQ.FT.



SECOND FLOOR
815 SQ.FT.



For more information.

Anabela daPonte-Cordeiro
EDMONTON AREA MANAGER

780-278-9143
EDMONTON@EXCELHOMES.CA

EXCELHOMES.CA

This floor plan represents one version of this home and measurements are approximate. The square footage, measurements and layout may vary based on the elevation and/or lot. All elevations shown are artist's concept only and will vary by community. The builder reserves the right to make modifications or substitutions should they be necessary. All plans, options, dimensions, specifications, materials and drawings are subject to change without notice. E.&O.E