

# Meet the Bentley

QUICK POSSESSION HOME IN EDMONTON  
3348 ERLANGER BEND NW EDMONTON, ALBERTA



DUPLEX  
COLLECTION

1552 SQ.  
FT.

3

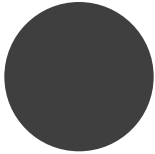
2.5



## This home's interior palette is the following:



LVP:  
Edmonton



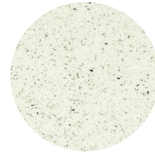
Cabinets:  
Charcoal



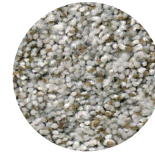
Kitchen Backsplash:  
Arctic White Bright



Bathroom Backsplash:  
Glossy White



Quartz Countertops:  
Crystal Crescent



Carpet:  
Stone



Paint:  
Designer Grey

## This home features the following:

- Level 1 kitchen
- Exterior side entry to basement
- Basement suite rough-in (one bedroom)
- Double car garage
- Dual sinks in the ensuite

## Standard features:

- BUILT GREEN® certified home
- Stainless steel appliances
- Thermally fused laminate cabinets
- Luxury vinyl plank throughout entire main floor and second floor wet areas
- Please see your Area Manager for the complete list of standard features

## You can purchase this home for:



including home, lot and GST

## Home availability:



## For more information:



**Anabela daPonte-Cordeiro**  
EDGEMONT AREA MANAGER

T: 780-278-9143

E: edgemont@excelhomes.ca



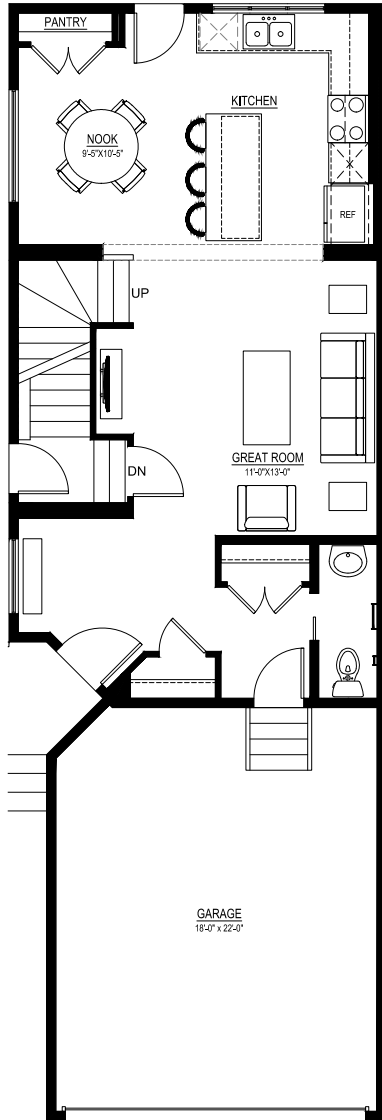
Simplifying your journey home.

# Meet the Bentley

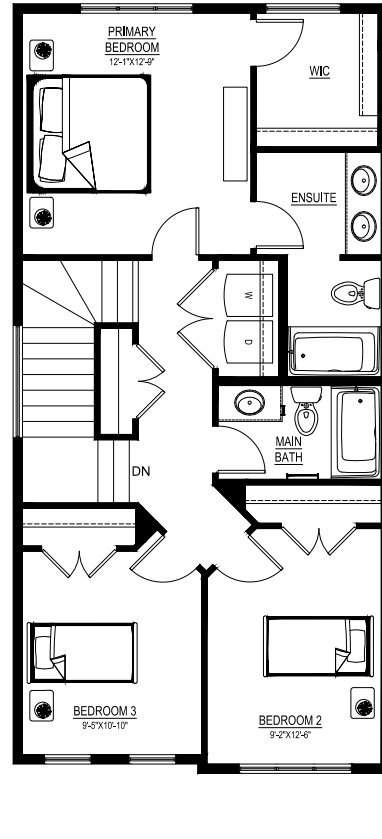
QUICK POSSESSION HOME IN EDMONTON 3348 ERLANGER BEND NW

## Floor plans

MAIN FLOOR  
737 SQ.FT.



SECOND FLOOR  
815 SQ.FT.



For more information.

Anabela daPonte-Cordeiro  
EDMONTON AREA MANAGER

780-278-9143  
EDMONTON@EXCELHOMES.CA

EXCELHOMES.CA