

Meet the Bellevue

QUICK POSSESSION HOME IN PRINCETON
98 PRINCE DRIVE NE CALGARY, ALBERTA



LANE
COLLECTION

1794 SQ.
FT.

3

2.5



This home's interior palette is the following:



LVP:
Chasing Ice



Cabinets:
Oxford Grey



Backsplash:
Cloud Glossy



Countertops:
Ivory Coast



Carpet:
Beach Lava



Paint:
Designer Grey

This home features the following:

- Level 3 gas range
- Main floor bedroom
- Full bath on main floor
- Upgrade tubshower to shower on main floor bath
- Additional potlights to kitchen, great room & bonus room
- Gun metal grey spindled railing
- Gasline to BBQ
- Anthracite silgranit undermount sink to kitchen
- Vaulted bonus room ceiling
- Exterior side entry to basement
- Basement rough-in (two bedroom)

Standard features:

- BUILT GREEN® certified home
- Stainless steel appliances
- Thermally fused laminate cabinets
- Luxury vinyl plank throughout entire main floor and second floor wet areas
- Please see your Area Manager for the complete list of standard features

You can purchase this home for:

\$

including home, lot and GST

Home availability:



For more information:



Jeff Van de Cappelle
PRINCETON AREA MANAGER

T: 587-891-5102

E: princeton@excelhomes.ca

**EXCEL
HOMES**

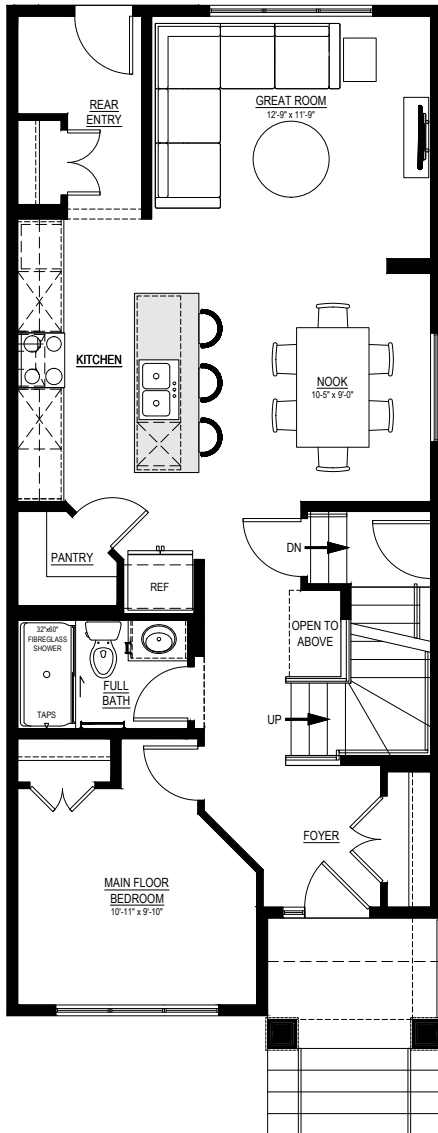
..... Simplifying your journey home.

Meet the Bellevue

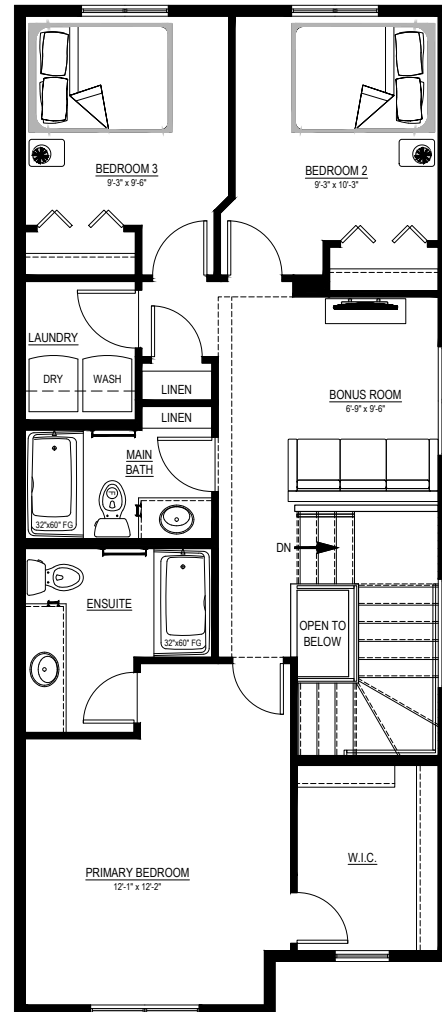
QUICK POSSESSION HOME IN PRINCETON 98 PRINCE DRIVE NE

Floor plans

MAIN FLOOR
894 SQ.FT.



SECOND FLOOR
900 SQ.FT.



For more
information.

Jeff Van de Cappelle
PRINCETON AREA MANAGER

587-891-5102
PRINCETON@EXCELHOMES.CA

EXCELHOMES.CA

This floorplan represents one version of this home and measurements are approximate. The square footage, measurements and layout may vary based on the elevation and/or lot. All elevations shown are artist's concept only and will vary by community. The builder reserves the right to make modifications or substitutions should they be necessary. All plans, options, dimensions, specifications, materials and drawings are subject to change without notice. E.&O.E