

Meet the Bellevue

QUICK POSSESSION HOME IN CREEKSTONE
21346 SHERIFF KING STREET SW CALGARY, ALBERTA



1794 SQ. FT.



2.5



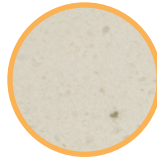
This home's interior palette is the following:



Cabinets:
Free Spirit



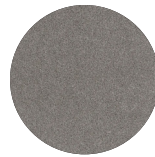
Backsplash:
Mist



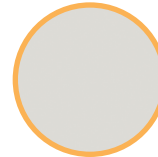
Eng. Stone:
Polaire



LVP:
Chasing Ice



Carpet:
Calipso



Paint:
Deisgner Grey

This home features the following:

- Level 2 kitchen
- Pot lights to the kitchen and great room
- Paint grade railing w/ wood spindles
- 2 bedroom basement suite
- Pressure treated rear landing
- Exterior side entry to basement
- Gasline to BBQ

Standard features:

- BUILT GREEN® certified home
- Stainless steel appliances
- Thermally fused laminate cabinets
- Luxury vinyl plank throughout entire main floor and second floor wet areas
- Please see your Area Manager for the complete list of standard features

You can purchase this home for:



including home, lot and GST

Home availability:



For more information:



Faryn & Michelle
CREEKSTONE AREA MANAGERS

T: 587-576-8656
E: creekstone@excelhomes.ca



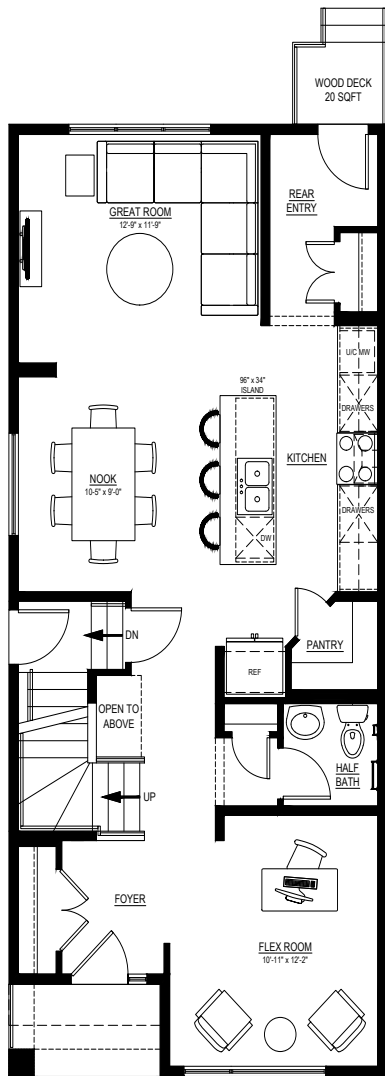
Simplifying your journey home.

Meet the Bellevue

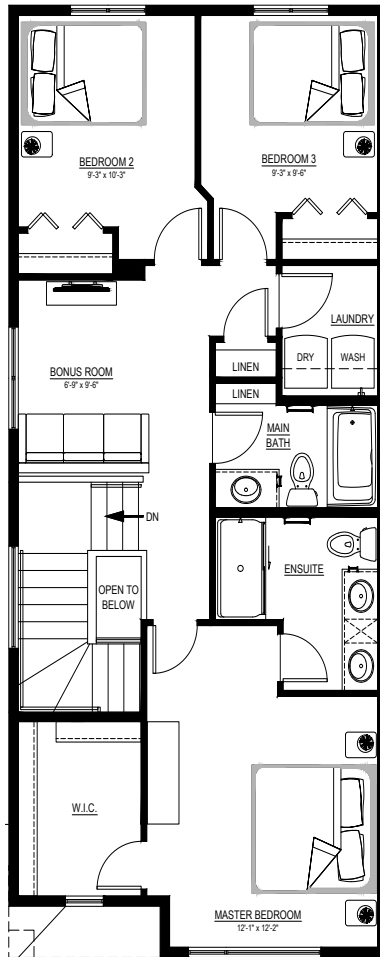
QUICK POSSESSION HOME IN CREEKSTONE 21346 SHERIFF KING STREET SW

Floor plans

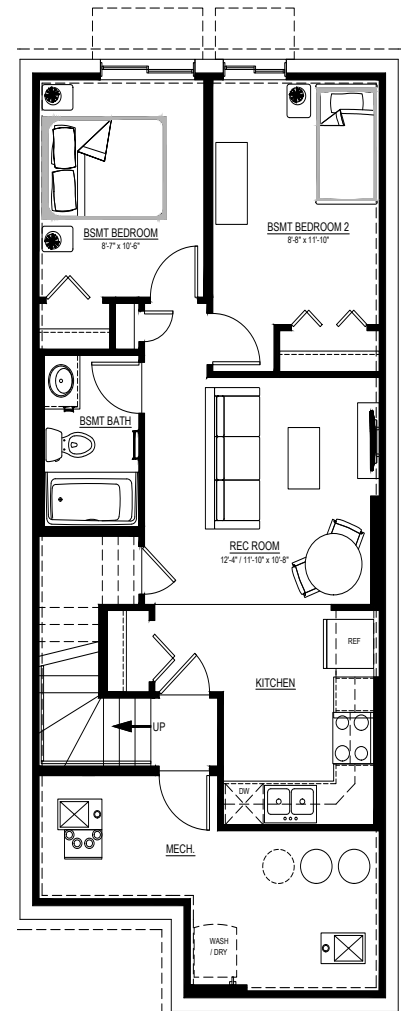
• MAIN FLOOR
• 894 SQ.FT.



• SECOND FLOOR
• 900 SQ.FT.



• BASEMENT SUITE
• 605 SQ.FT.



For more information.

Faryn & Michelle
CREEKSTONE AREA MANAGERS

587-576-8656
CREEKSTONE@EXCELHOMES.CA

EXCELHOMES.CA

This floorplan represents one version of this home and measurements are approximate. The square footage, measurements and layout may vary based on the elevation and/or lot. All elevations shown are artist's concept only and will vary by community. The builder reserves the right to make modifications or substitutions should they be necessary. All plans, options, dimensions, specifications, materials and drawings are subject to change without notice. E.&O.E