

Meet the Beckett

QUICK POSSESSION HOME IN EDMONTON
8919 ELVES LOOP NW EDMONTON, ALBERTA



DUPLEX
COLLECTION

1703 SQ.
FT.

3

2.5



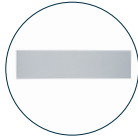
This home's interior palette is the following:



LVP:
Tundra



Cabinets:
Light Grey



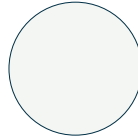
Backsplash:
White Matte



Countertops:
Moon Rock



Carpet:
Dragon Grey



Paint:
Summit

This home features the following:

- Level 1 kitchen
- Partial rear pressure treated deck
- Exterior side entry
- Level 1 chrome pendant to kitchen island
- Level 2 chrome small chandelier to nook

Standard features:

- BUILT GREEN® certified home
- Complete 6-piece ENERGY STAR® rated appliance package
- 1 1/4" quartz countertops throughout
- Luxury vinyl plank throughout entire main floor and second floor wet areas
- Full yard landscaping
- Please see your Area Manager for the complete list of standard features

You can purchase this home for:

\$

including home, lot and GST

Home availability:



For more information:



Anabela daPonte-Cordeiro
EDMONTON AREA MANAGER

T: 780-756-8515
E: edgemont@excelhomes.ca

**EXCEL
HOMES**

..... Simplifying your journey home.

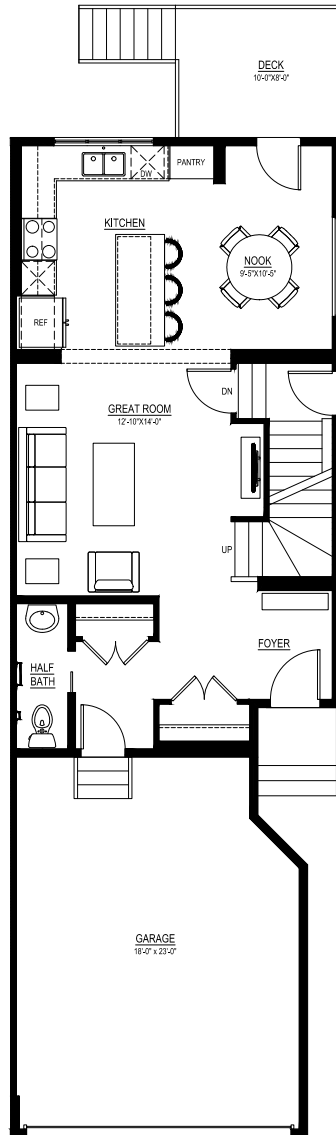
Meet the

Beckett

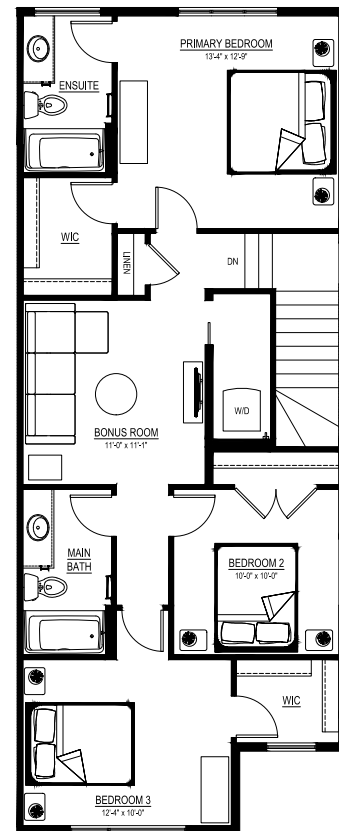
QUICK POSSESSION HOME IN EDMONTON 8919 ELVES LOOP NW

Floor plans

MAIN FLOOR
735 SQ.FT.



SECOND FLOOR
968 SQ.FT.



For more
information.

Anabela daPonte-Cordeiro
EDMONTON AREA MANAGER

780-756-8515
EDMONTON@EXCELHOMES.CA

EXCELHOMES.CA

This floorplan represents one version of this home and measurements are approximate. The square footage, measurements and layout may vary based on the elevation and/or lot. All elevations shown are artist's concept only and will vary by community. The builder reserves the right to make modifications or substitutions should they be necessary. All plans, options, dimensions, specifications, materials and drawings are subject to change without notice. E.&O.E