

Meet the Beckett



QUICK POSSESSION HOME IN ALCES
706 22ND STREET SW EDMONTON, ALBERTA



DUPLEX COLLECTION

1670 SQ. FT.

3

2.5

This home's interior palette is the following:



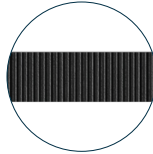
LVP: Nurture



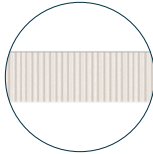
Kitchen and Bath Cabinets: Free Spirit



Kitchen Island Cabinets: First Class



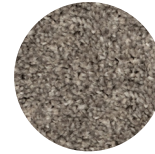
Kitchen Backsplash: Murano Black



Bathroom Backsplash: Murano White



Countertops: Whistler



Carpet: Dragon Grey



Paint: Crystal

This home features the following:

- Level 1 kitchen upgrade complete with crown moulding, island extension, 42" upper cabinets, and one pots and pans drawer
- Level 1 brushed nickel pendant to kitchen island
- Level 1 brushed nickel small chandelier to nook
- Level 1 steel flush mount to great room
- Exterior side entry

Standard features:

- BUILT GREEN® certified home
- Complete 6-piece ENERGY STAR® rated appliance package
- 1/4" quartz countertops throughout
- Luxury vinyl plank throughout entire main floor and second floor wet areas
- Full yard landscaping
- Please see your Area Manager for the complete list of standard features

You can purchase this home for:

\$

including home, lot and GST

Home availability:



For more information:



Sudip Punoria
ALCES AREA MANAGER

T: 780-709-8730
E: spunoria@excelhomes.ca



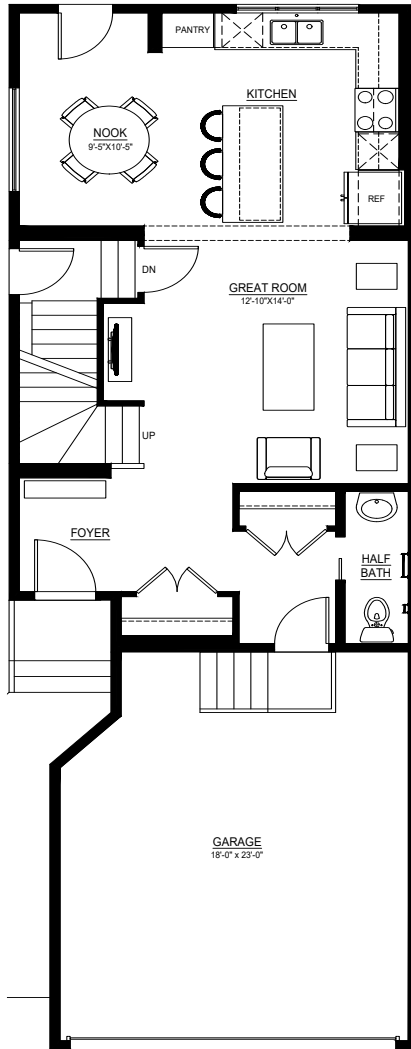
Simplifying your journey home.

Meet the Beckett

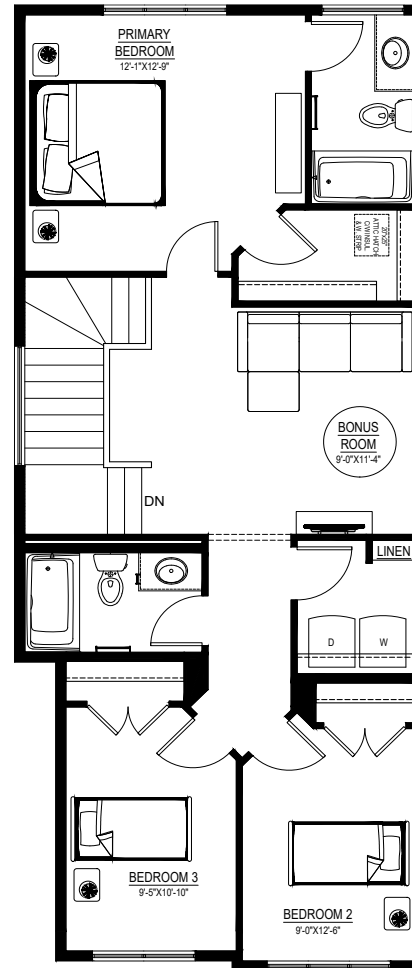
QUICK POSSESSION HOME IN ALCES 706 22ND STREET SW

Floor plans

MAIN FLOOR
735 SQ.FT.



SECOND FLOOR
935 SQ.FT.



For more information.

Sudip Punoria
ALCES AREA MANAGER

780-709-8730
SPUNORIA@EXCELHOMES.CA

EXCELHOMES.CA