

Meet the Beckett



QUICK POSSESSION HOME IN THE ORCHARDS
5317 HAWTHORN CLOSE SW EDMONTON, ALBERTA



DUPLEX COLLECTION

1703 SQ. FT.

3

2.5

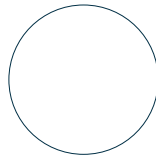
This home's interior palette is the following:



LVP: Vision



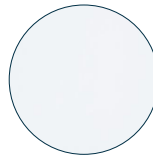
Cabinets: Fashionista



Kitchen Upper Cabinets: Cotton Mist



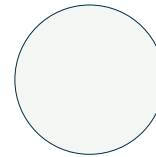
Backsplash: Eksa Atlas White



Countertops: Miami White



Carpet: Sand Martin



Paint: Summit

This home features the following:

- Level 1 kitchen upgrade complete with crown moulding, island extension, 42" upper cabinets, and one pots and pans drawer
- Level 1 pendant to island
- Level 1 matte black faucet to kitchen
- Level 2 black bath hardware
- Level 2 black door handles
- Upgrade tubshower to shower in second floor main bath
- Exterior side entry to basement

Standard features:

- BUILT GREEN® certified home
- Complete 6-piece ENERGY STAR® rated appliance package
- 1 1/4" quartz countertops throughout
- Luxury vinyl plank throughout entire main floor and second floor wet areas
- Full yard landscaping
- Please see your Area Manager for the complete list of standard features

You can purchase this home for:

\$

including home, lot and GST

Home availability:



For more information:



Amber Amritwar
THE ORCHARDS

T: 780-977-2739

E: theorchards@excelhomes.ca



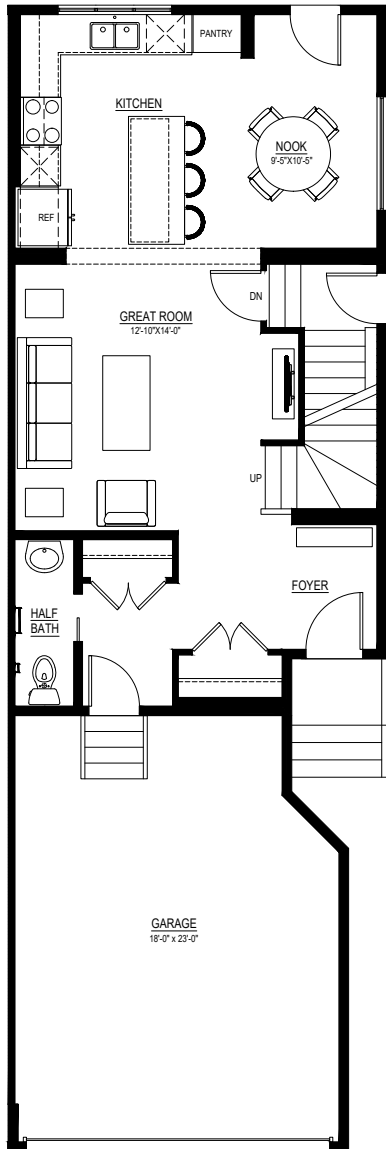
Simplifying your journey home.

Meet the Beckett

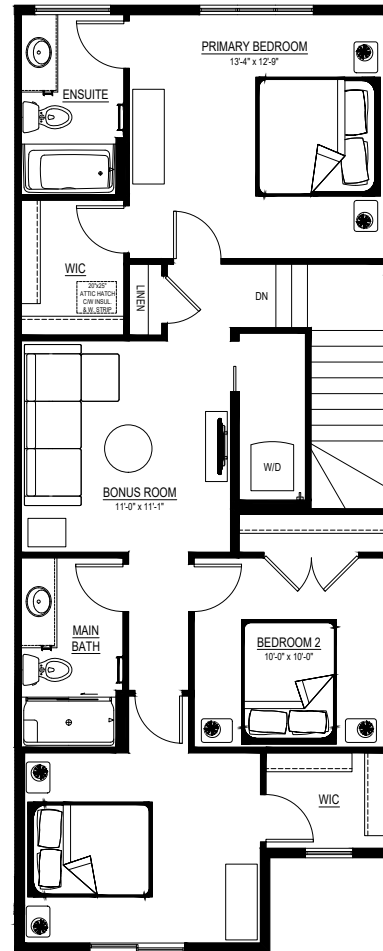
QUICK POSSESSION HOME IN THE ORCHARDS 5317 HAWTHORN CLOSE SW

Floor plans

MAIN FLOOR
735 SQ.FT.



SECOND FLOOR
968 SQ.FT.



For more information.

Amber Amritwar
THE ORCHARDS AREA MANAGER

780-977-2739
THEORCHARDS@EXCELHOMES.CA

EXCELHOMES.CA