

# Meet the Beckett



QUICK POSSESSION HOME IN EDMONTON  
112 EDMONTON WYND NW, EDMONTON, ALBERTA



DUPLEX  
COLLECTION

1670 SQ.  
FT.

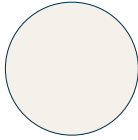
3

2.5

## This home's interior palette is the following:



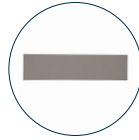
LVP:  
Vision



Kitchen Upper,  
Ensuite & Bath  
Cabinets:  
Fresh Linen



Kitchen Lower  
Cabinets:  
Pewter Green



Backsplash:  
Light Grey  
Matte



Countertops:  
White Rock



Carpet:  
Democracy



Paint:  
Crystal

## This home features the following:

- Level 1 kitchen
- Exterior side entry
- Level 1 pendant to kitchen island
- Level 1 small chandelier to nook

## Standard features:

- BUILT GREEN® certified home
- Complete 6-piece ENERGY STAR® rated appliance package
- 1 1/4" quartz countertops throughout
- Luxury vinyl plank throughout entire main floor and second floor wet areas
- Full yard landscaping
- Please see your Area Manager for the complete list of standard features

## You can purchase this home for:

\$

including home, lot and GST

## Home availability:



## For more information:



**Anabela daPonte-Cordeiro**  
EDGEMONT AREA MANAGER

T: 780-278-9143

E: [edgemont@excelhomes.ca](mailto:edgemont@excelhomes.ca)



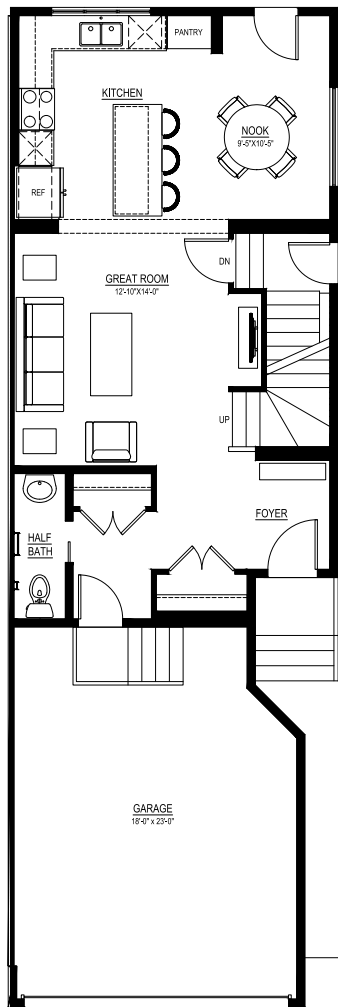
Simplifying your journey home.

# Meet the Beckett

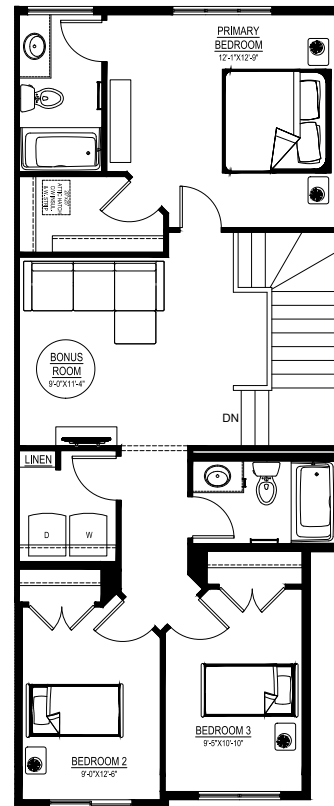
QUICK POSSESSION HOME IN EDMONTON 112 EDMONTON WYND NW

## Floor plans

MAIN FLOOR  
735 SQ.FT.



SECOND FLOOR  
935 SQ.FT.



For more information.

Anabela daPonte-Cordeiro  
EDMONTON AREA MANAGER

780-278-9143  
EDMONTON@EXCELHOMES.CA

EXCELHOMES.CA