

Meet the Aurora

QUICK POSSESSION HOME IN ALCES
335 22 STREET SW EDMONTON, ALBERTA



FRONT GARAGE
COLLECTION

2101 SQ.
FT.

3

3



This home's interior palette is the following:



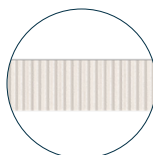
LVP:
Etiquette



Kitchen Upper
Cabinets:
Morning Dew



Kitchen Lower
& Bathroom
Cabinets:
Salt of the Earth



Kitchen
Backsplash:
Murano White



Bathroom
Backsplash:
Capri Glacier



Countertops:
Miami White



Carpet:
Democracy



Paint:
Summit

This home features the following:

- Level 2 kitchen upgrade complete with crown moulding, island extension, 42" upper cabinets, and two pots and pans drawers and kitchen hoodfan
- Main floor flex room with door
- Full bath on main floor with upgraded shower
- Level 1 ensuite with increased tub size, second sink, bank of drawers, and full height tile above shower
- Level 1 matte black faucet to kitchen
- Level 1 black NuGranite sink to kitchen
- Level 1 gold small chandelier to nook
- Level 1 black & brass pendants to kitchen island
- Level 2 black & brass large chandelier to great room
- Open to above electric fireplace
- Black iron spindle railing
- Exterior side entry

Standard features:

- BUILT GREEN® certified home
- Complete 6-piece ENERGY STAR® rated appliance package
- 1/4" quartz countertops throughout
- Luxury vinyl plank throughout entire main floor and second floor wet areas
- Full yard landscaping
- Please see your Area Manager for the complete list of standard features

You can purchase this home for:



including home, lot and GST

Home availability:



For more information:



Sudip Punoria
ALCES AREA MANAGER

T: 780-709-8730
E: spunoria@excelhomes.ca



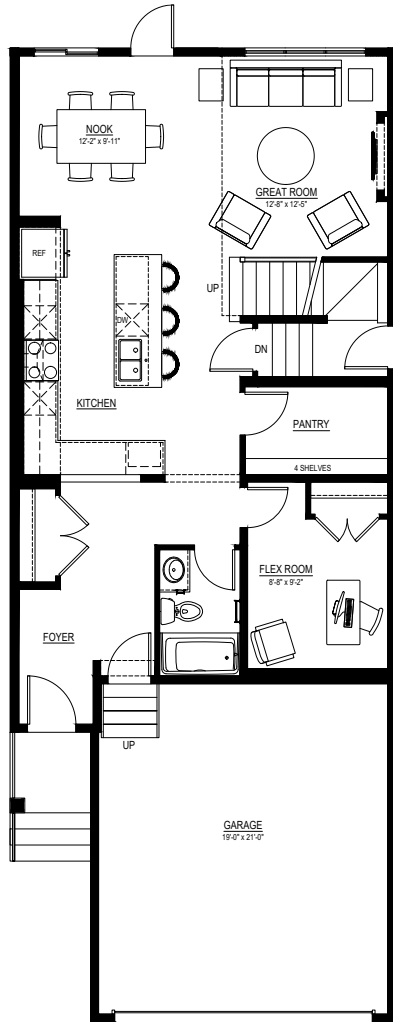
Simplifying your journey home.

Meet the Aurora

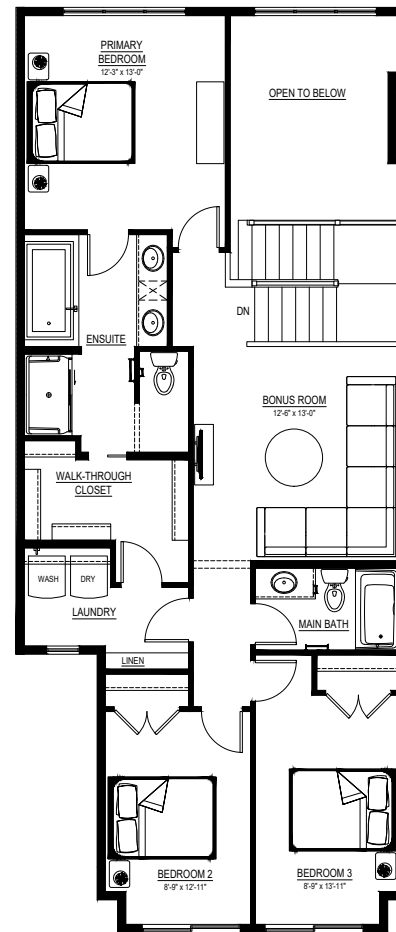
QUICK POSSESSION HOME IN ALCES 335 22 STREET SW

Floor plans

MAIN FLOOR
965 SQ.FT.



SECOND FLOOR
1136 SQ.FT.



For more information.

Sudip Punoria
ALCES AREA MANAGER

780-709-8730
SPUNORIA@EXCELHOMES.CA

EXCELHOMES.CA