

# Meet the Ashford



QUICK POSSESSION HOME IN EDMONTON  
108 EDMONTON WYND NW, EDMONTON, ALBERTA



DUPLEX  
COLLECTION

1589 SQ.  
FT.

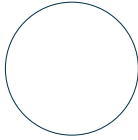
3

2.5

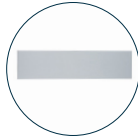
## This home's interior palette is the following:



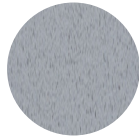
LVP:  
Sittler



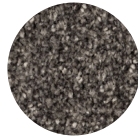
Cabinets:  
Carte Blanche



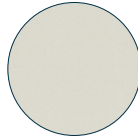
Backsplash:  
White Matte



Countertops:  
Grey Cinder



Carpet:  
Calm Night



Paint:  
Platinum

## This home features the following:

- Level 1 kitchen
- Exterior side entry
- Level 1 pendant to kitchen island

## Standard features:

- BUILT GREEN® certified home
- Complete 6-piece ENERGY STAR® rated appliance package
- 1 1/4" quartz countertops throughout
- Luxury vinyl plank throughout entire main floor and second floor wet areas
- Full yard landscaping
- Please see your Area Manager for the complete list of standard features

## You can purchase this home for:



including home, lot and GST

## Home availability:



## For more information:



**Anabela daPonte-Cordeiro**  
EDMONTON AREA MANAGER

T: 780-278-9143  
E: edgemont@excelhomes.ca



Simplifying your journey home.

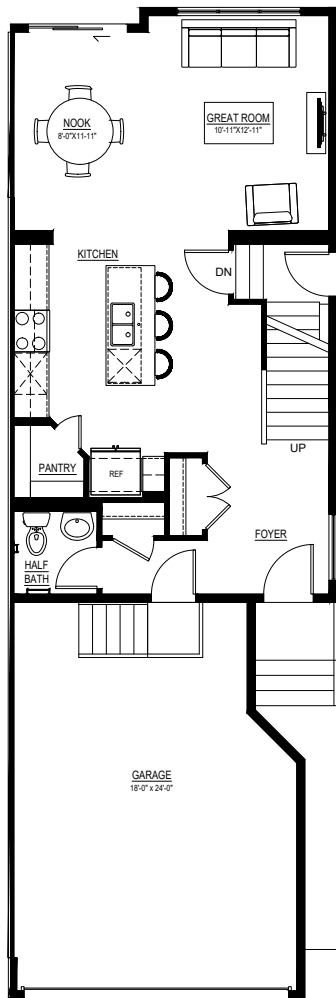
Meet the

# Ashford

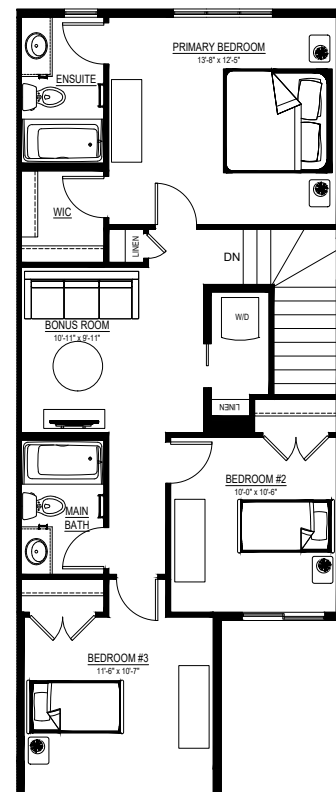
QUICK POSSESSION HOME IN EDMONTON 108 EDMONTON WYND NW

## Floor plans

• MAIN FLOOR  
• 712 SQ.FT.



• SECOND FLOOR  
• 877 SQ.FT.



For more  
information.

Anabela daPonte-Cordeiro  
EDMONTON AREA MANAGER

780-278-9143  
EDMONTON@EXCELHOMES.CA

EXCELHOMES.CA