

# Meet the Ashby

QUICK POSSESSION HOME IN ALCES  
307 22 STREET SW EDMONTON, ALBERTA



FRONT GARAGE  
COLLECTION

1567 SQ.  
FT.

3

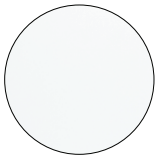
2.5



## This home's interior palette is the following:



LVP:  
Vision



Cabinets:  
Cloud White



Backsplash:  
White Matte



Quartz Countertops:  
Flint



Carpet:  
Democracy



Paint:  
Summit

## This home features the following:

- Level 1 kitchen upgrade complete with crown moulding, island extension, 42" upper cabinets, and one pots and pans drawer
- Exterior side entry to basement

## Standard features:

- BUILT GREEN® certified home
- Complete 6-piece ENERGY STAR® rated appliance package
- 1 1/4" quartz countertops throughout
- Luxury vinyl plank throughout entire main floor and second floor wet areas
- Full yard landscaping
- Please see your Area Manager for the complete list of standard features

## You can purchase this home for:

\$

including home, lot and GST

## Home availability:



## For more information:



**Sudip Punoria**  
ALCES AREA MANAGER

T: 780-709-8730  
E: [spunoria@excelhomes.ca](mailto:spunoria@excelhomes.ca)

**EXCEL  
HOMES**

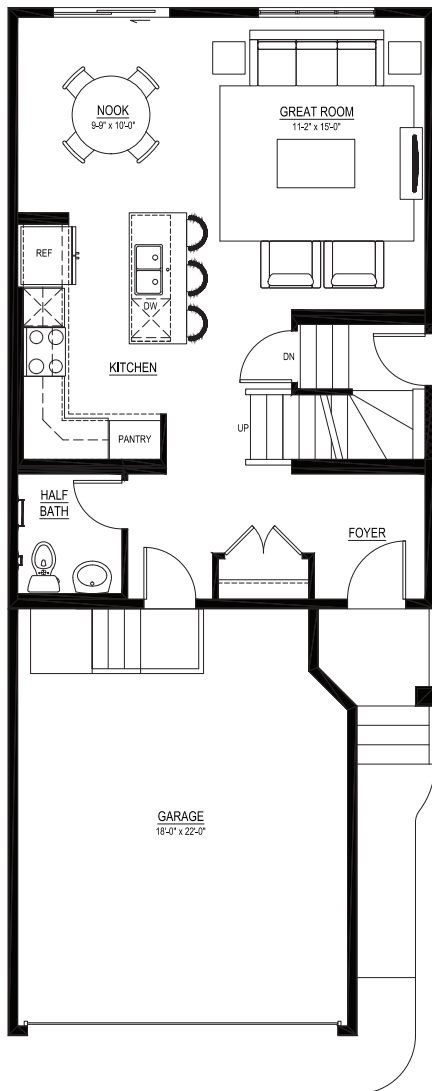
..... Simplifying your journey home.

# Meet the Ashby

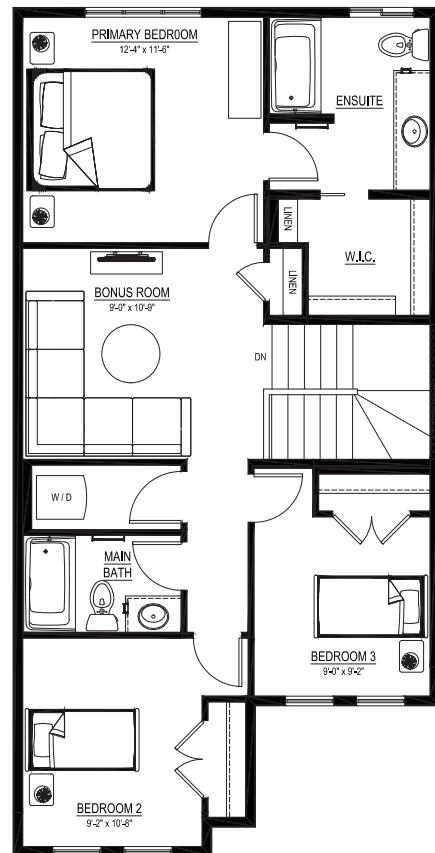
QUICK POSSESSION HOME IN ALCES 307 22 STREET SW

## Floor plans

MAIN FLOOR  
682 SQ.FT.



SECOND FLOOR  
885 SQ.FT.



For more  
information.

**Sudip Punoria**  
ALCES AREA MANAGER

**780-709-8730**  
SPUNORIA@EXCELHOMES.CA

EXCELHOMES.CA

This floorplan represents one version of this home and measurements are approximate. The square footage, measurements and layout may vary based on the elevation and/or lot. All elevations shown are artist's concept only and will vary by community. The builder reserves the right to make modifications or substitutions should they be necessary. All plans, options, dimensions, specifications, materials and drawings are subject to change without notice. E.&O.E