

Meet the Archer 22

QUICK POSSESSION HOME IN CITADEL
2820 152 AVENUE NW EDMONTON, ALBERTA



FRONT GARAGE
COLLECTION

1358 SQ.
FT.

3

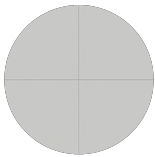
2.5



This home's interior palette is the following:



Cabinets:
Fashionista



Backsplash/Tile:
Cape Grey



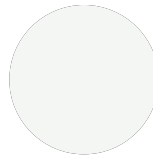
Quartz Countertop:
Diavik



LVP:
Milan



Carpet:
Weathered



Paint:
Summit

This home features the following

- 9' Main Floor Ceiling
- Upgraded Kitchen
 - Waterline to Fridge
 - 42" Upper Cabinets
 - Quartz Countertops
 - 18" Backsplash
- Level 3 Pendant Light
- Level 3 Chandelier
- Upgraded Ensuite Shower

Standard features:

- BUILT GREEN® certified home
- Stainless steel appliances
- Thermally fused laminate cabinets
- Luxury vinyl plank throughout entire main floor and second floor wet areas
- Please see your Area Manager for the complete list of standard features

You can purchase this home for:

\$

including home, lot and GST

Home availability:



For more information:



Anabela & Lisa
CITADEL AREA CO-MANAGERS

T: 780-203-3329
E: citadel@excelhomes.ca



Simplifying your journey home.

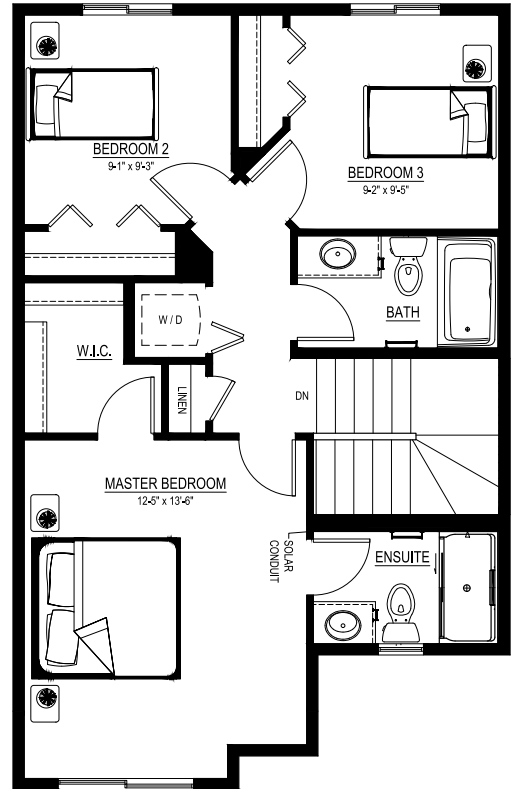
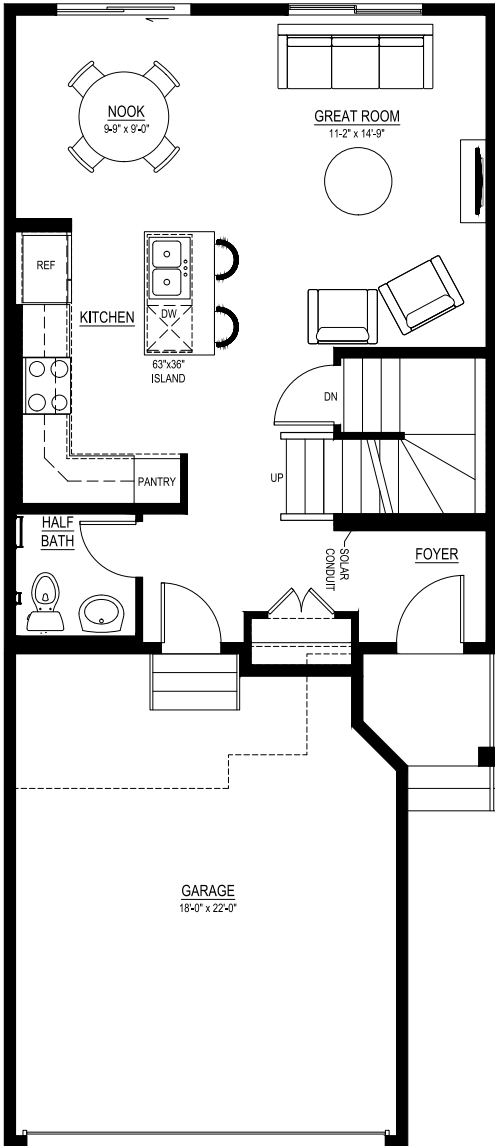
Meet the Archer 22

QUICK POSSESSION IN CITADEL 2820 152 AVENUE NW

Floor plans

MAIN FLOOR
644 SQ.FT.

SECOND FLOOR
714 SQ.FT.



For more information.

Anabela & Lisa
CITADEL AREA CO-MANAGERS

780-203-3329
CITADEL@EXCELHOMES.CA

EXCELHOMES.CA