

Meet the Alder

QUICK POSSESSION HOME IN EDMONTON
468 EDMONTON DRIVE NW EDMONTON, ALBERTA



LANE COLLECTION

1781 SQ. FT.

3

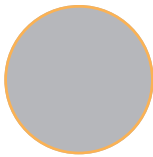
2.5



This home's interior palette is the following:



LVP: Venice Maine



Cabinets: Light Grey



Kitchen Backsplash: Beveled Tender



Backsplash: Glossy White



Quartz Countertops: Diavik



Carpet: Weathered



Paint: Summit

This home features the following:

- Level 1 kitchen
- Paint grade railing w/ metal spindles
- Level 3 lighting
- Exterior side entry to basement
- 1-bedroom basement suite rough-in

Standard features:

- BUILT GREEN® certified home
- Stainless steel appliances
- Thermally fused laminate cabinets
- Luxury vinyl plank throughout entire main floor and second floor wet areas
- Please see your Area Manager for the complete list of standard features

You can purchase this home for:

\$

including home, lot and GST

Home availability:



For more information:



Anabela daPonte-Cordeiro
EDGEMONT AREA MANAGER

T: 780-278-9143

E: edgemont@excelhomes.ca



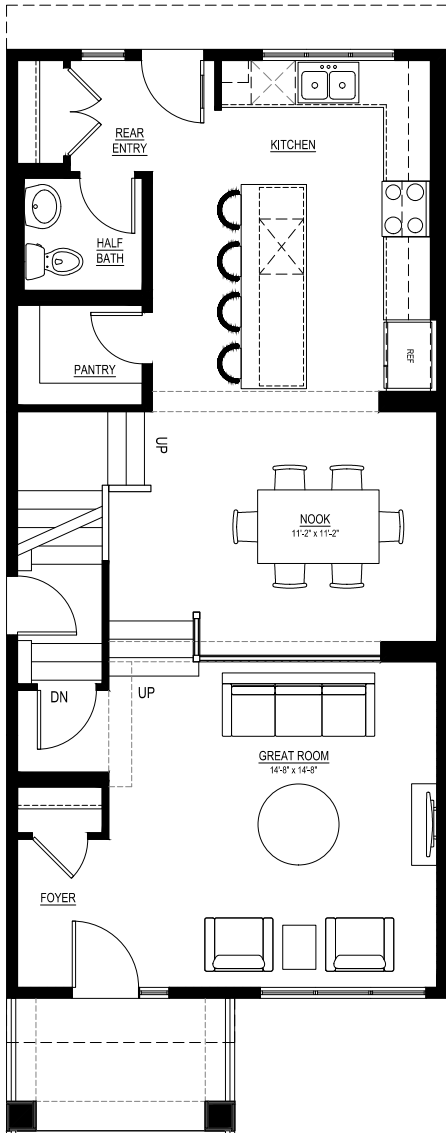
Simplifying your journey home.

Meet the Alder

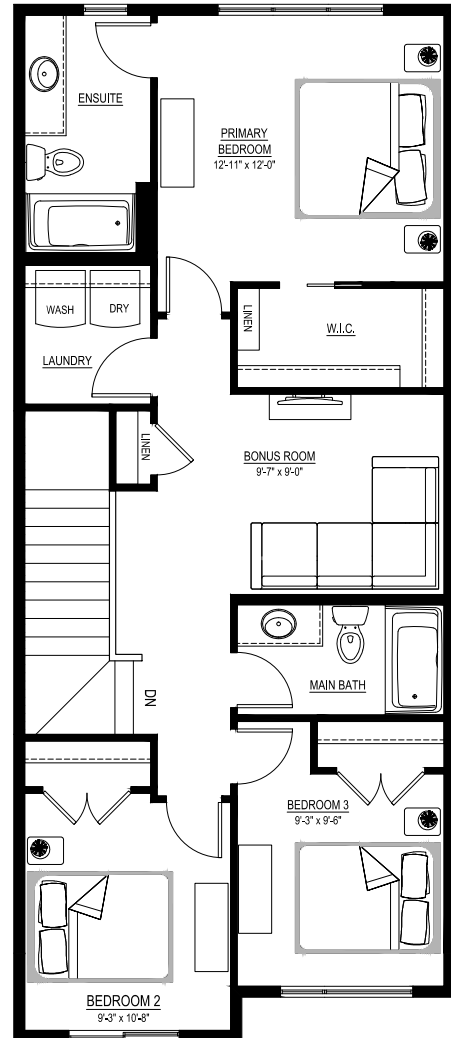
QUICK POSSESSION HOME IN EDMONTON 468 EDMONTON DRIVE NW

Floor plans

• MAIN FLOOR
• 860 SQ.FT.



• SECOND FLOOR
• 921 SQ.FT.



For more information.

Anabela daPonte-Cordeiro
EDMONTON AREA MANAGER

780-278-9143
EDMONTON@EXCELHOMES.CA

EXCELHOMES.CA