

Meet the
Windsor



LANED
COLLECTION

1754 SQ.
FT.

3

2.5



**Striving to make buying a home
simple, easier and more enjoyable.**

At Excel Homes, our mission is simple: to create a homebuying experience that delivers the most joy and value to our homeowners. Since we first began in 1988, we've built over 12,000 homes and received over 50 awards for design and industry excellence. That experience has helped develop a refined homebuying experience that values your time, simplifies the big decisions, and minimizes any stress that can come with building a new home.

At Excel, the experience of building your home will be exciting, easy and memorable throughout the entire process.

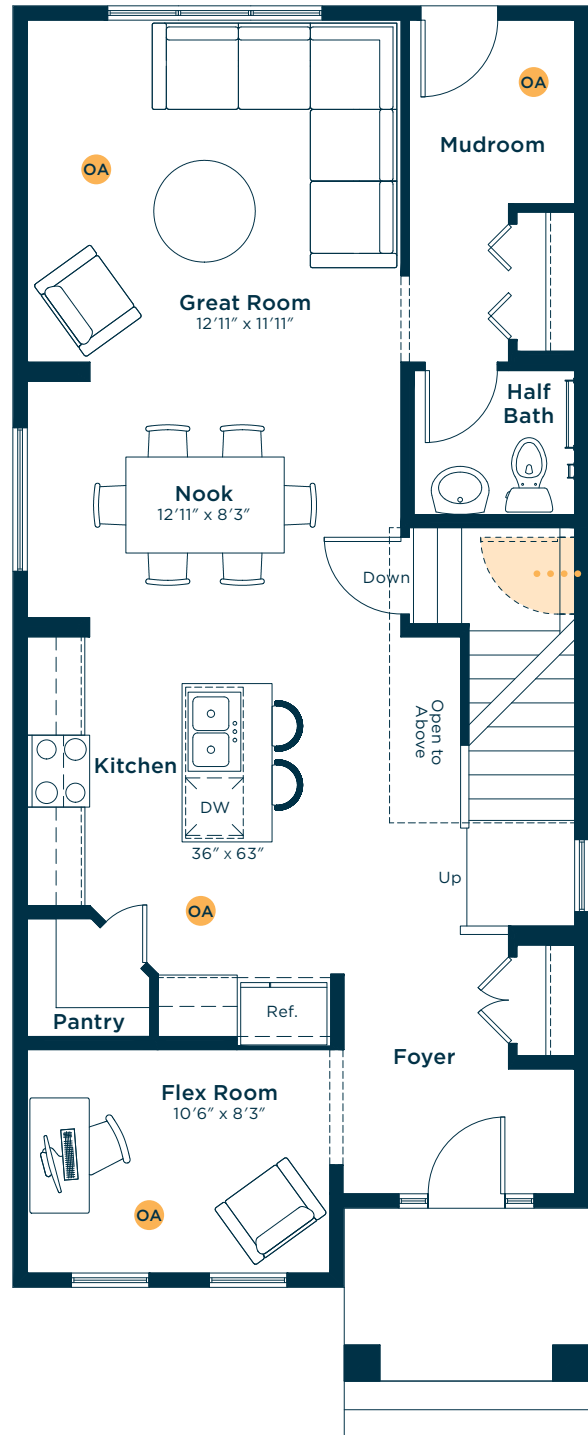
PROUDLY SUPPORTING



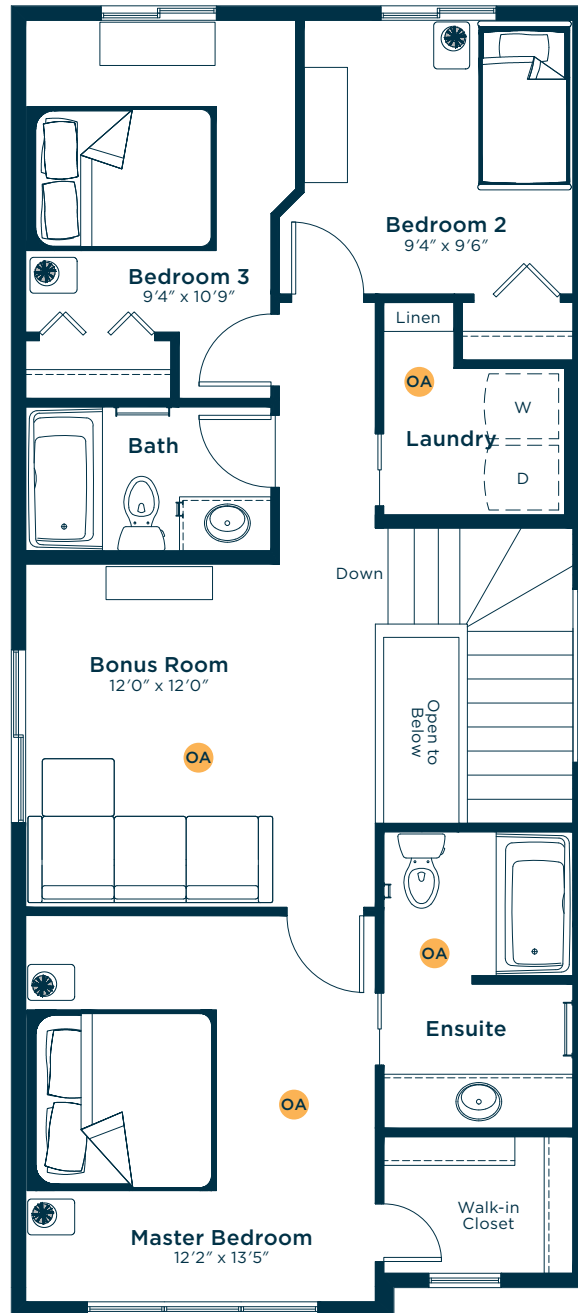
Meet the Windsor

OA OPTIONS AVAILABLE

MAIN FLOOR
867 SQ.FT.

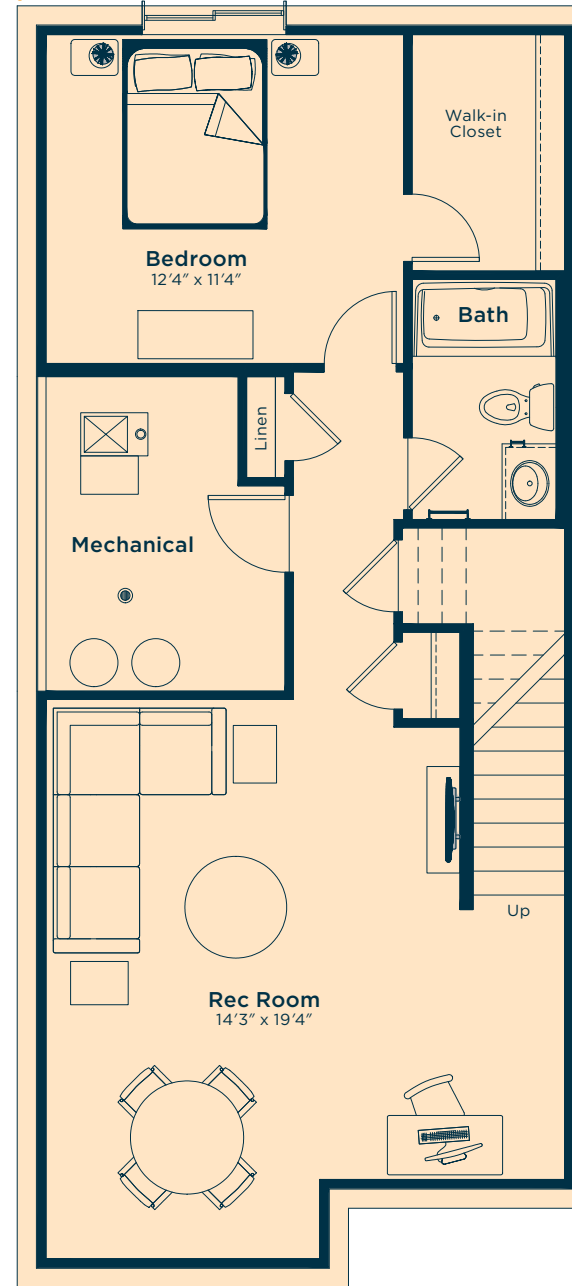


SECOND FLOOR
887 SQ.FT.

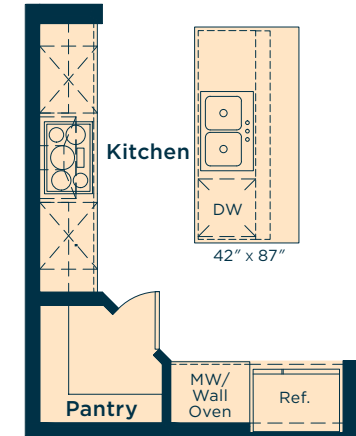


Ask us about these and many more Windsor floor plan options.

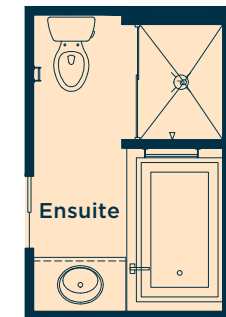
Develop the basement below with an extra bedroom, rec room and bath
642 SQ.FT.



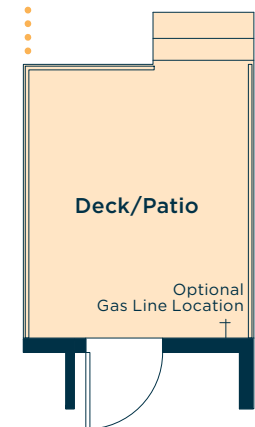
Upgrade the kitchen to Level 3 for a longer island, 42" upper cabinets, chimney-style hoodfan, pots and pans drawers, built-in microwave wall oven and more



Upgrade the ensuite for a soaker tub, shower unit with tile surround, dual sinks, bank of drawers and more



Add a rear deck/patio on the main floor



Wait... there's more!

We also have options for fireplaces, pot light arrangements, railing and much more! Ask your Area Manager to find out more today.