



Meet the  
**Wilton**



DUPLEX  
COLLECTION

**1757** SQ.  
FT.

**3** 

**2.5** 



**Striving to make buying  
a home simple, easier and  
more enjoyable.**

At Excel Homes, our mission is simple: to create a home-buying experience that delivers the most joy and value to our homeowners. For over 35 years, we've built over 15,000 homes in over 80+ communities and received over 75 awards for design and industry excellence. That experience has helped develop a refined homebuying experience that values your time, simplifies the big decisions, and minimizes any stress that can come with building a new home.

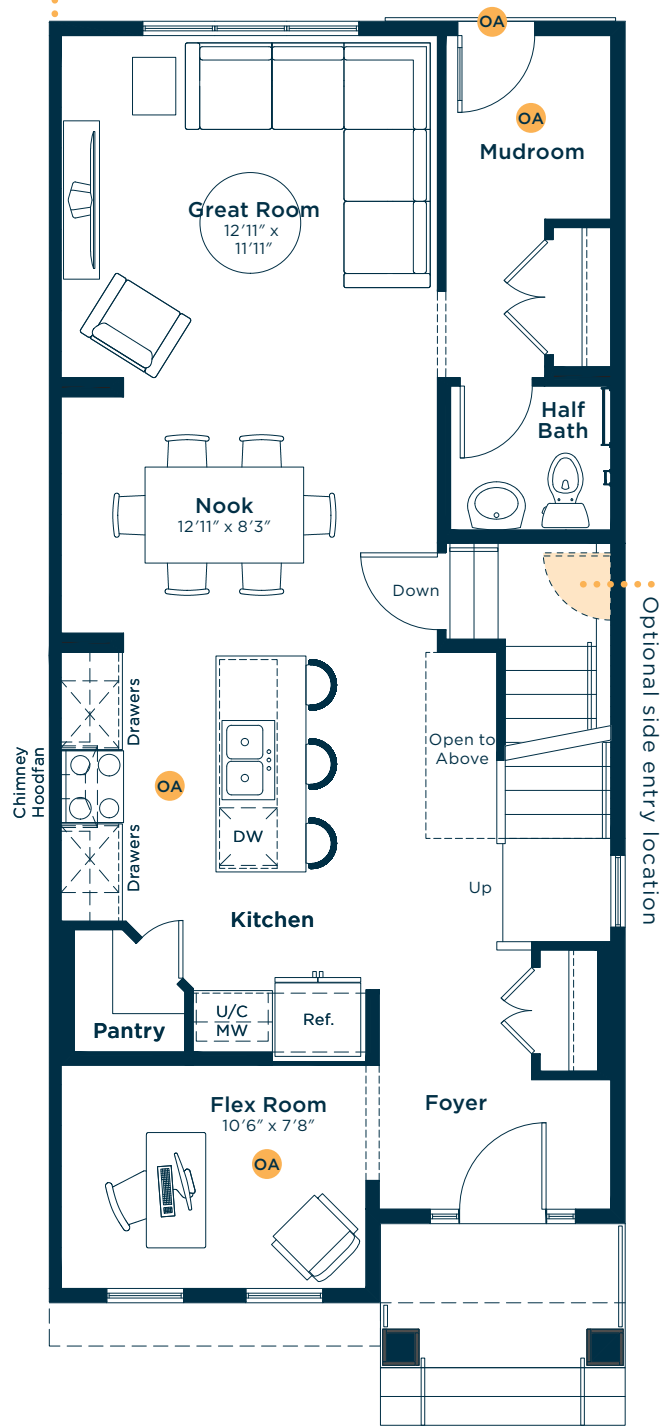
At Excel, the experience of building your home will be exciting, easy and memorable throughout the entire process.



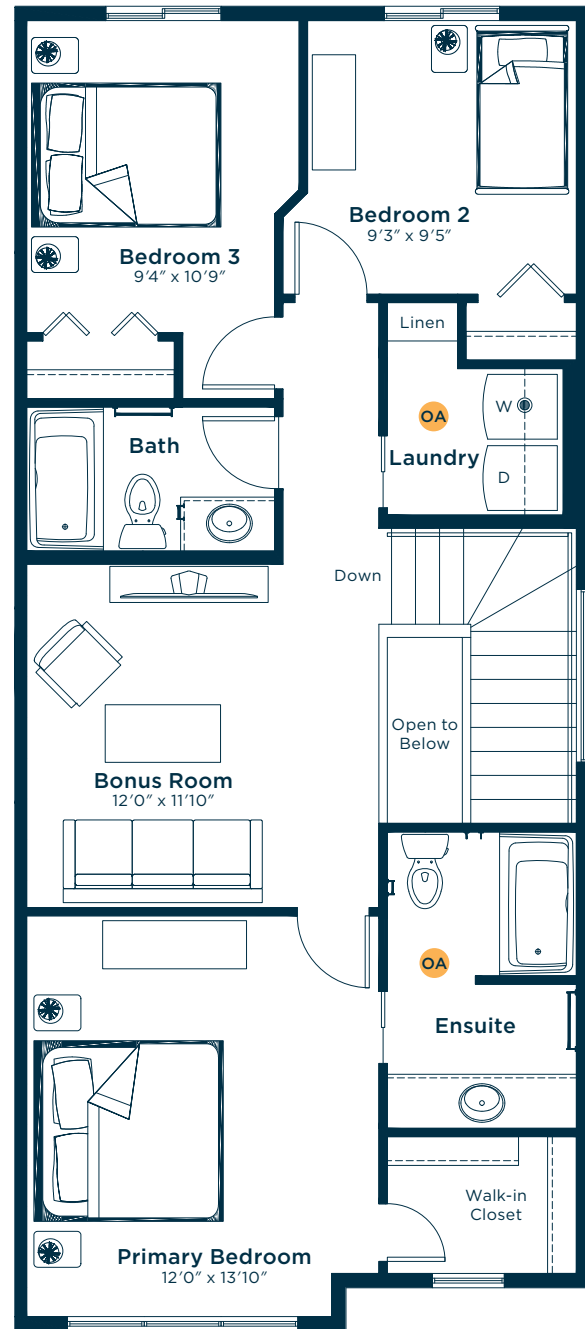
# Meet the Wilton

OA OPTIONS AVAILABLE

MAIN FLOOR  
867 SQ.FT.

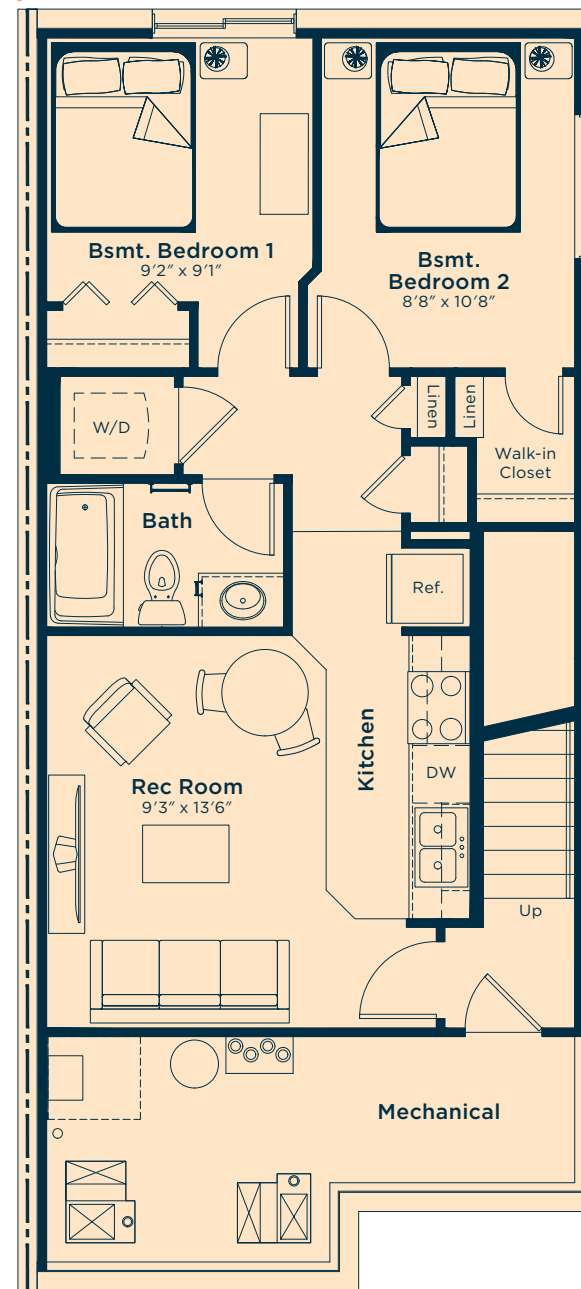


SECOND FLOOR  
890 SQ.FT.

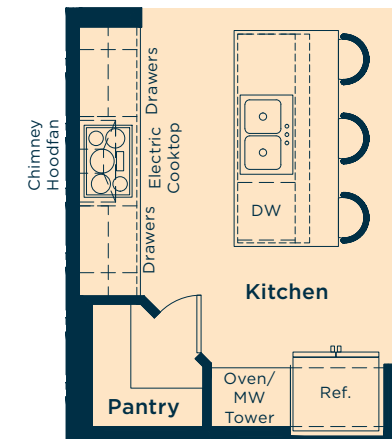


## Ask us about these and many more Wilton floor plan options.

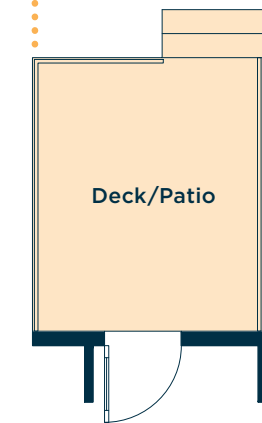
Develop a basement suite with two bedrooms, kitchen, rec room, laundry and bath  
631 SQ.FT.



Upgrade the kitchen to Level 1 for an extra pots & pans drawer, microwave/wall oven tower with trim kit, and electric cooktop with lower base cabinet



Add a rear deck/patio with stairs to the backyard



### Wait... there's more!

We also have options for the mudroom, basement suites, pot light arrangements, ensuite, railing and much more! Ask your Area Manager to find out more today.