

Meet the
Westhill



FRONT GARAGE
COLLECTION

2511 SQ.
FT.

4

2.5



**Striving to make buying a home
simple, easier and more enjoyable.**

At Excel Homes, our mission is simple: to create a homebuying experience that delivers the most joy and value to our homeowners. Since we first began in 1988, we've built over 12,000 homes and received over 50 awards for design and industry excellence. That experience has helped develop a refined homebuying experience that values your time, simplifies the big decisions, and minimizes any stress that can come with building a new home.

At Excel, the experience of building your home will be exciting, easy and memorable throughout the entire process.

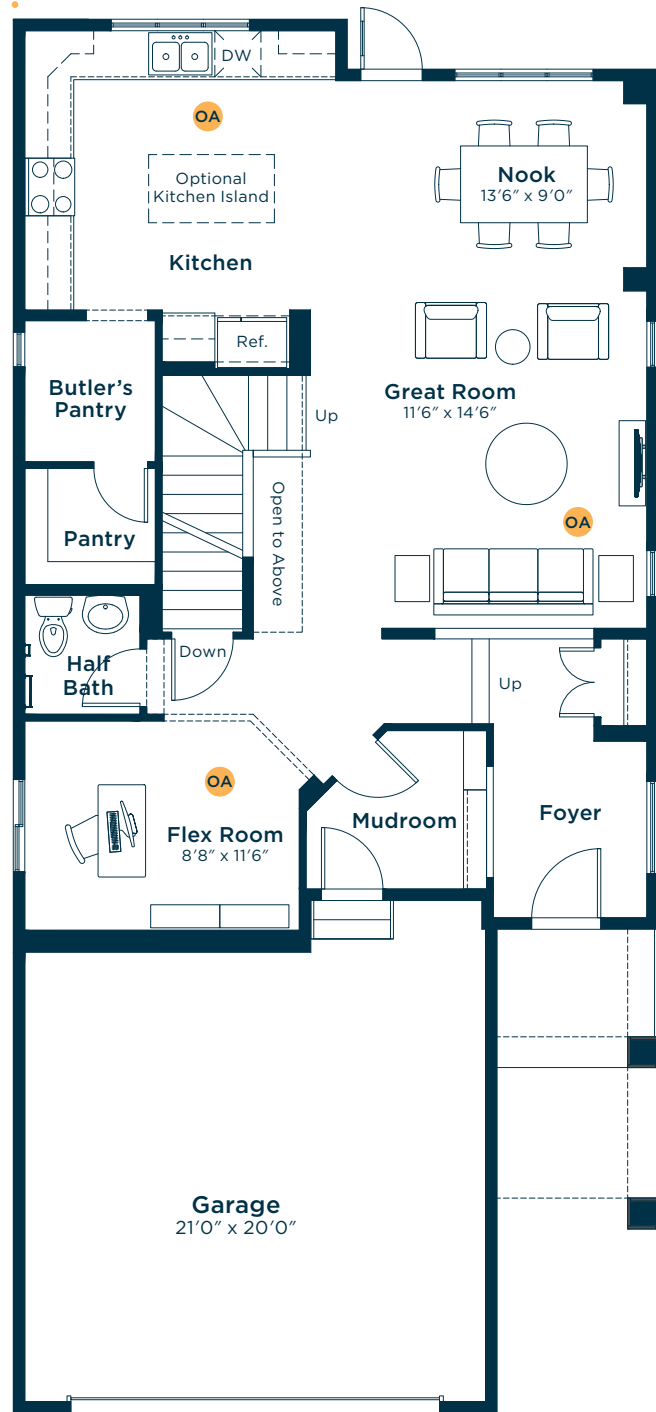
PROUDLY SUPPORTING



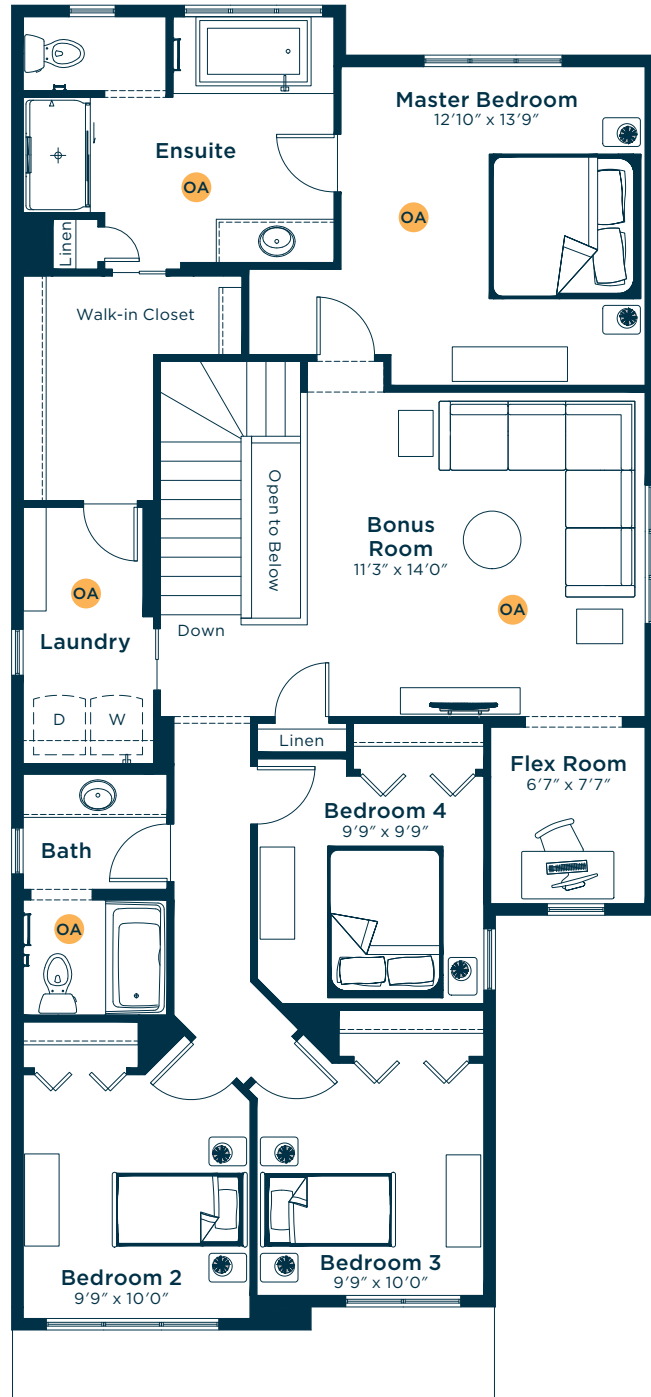
Meet the Westhill

OA OPTIONS AVAILABLE

MAIN FLOOR 1080 SQ.FT.

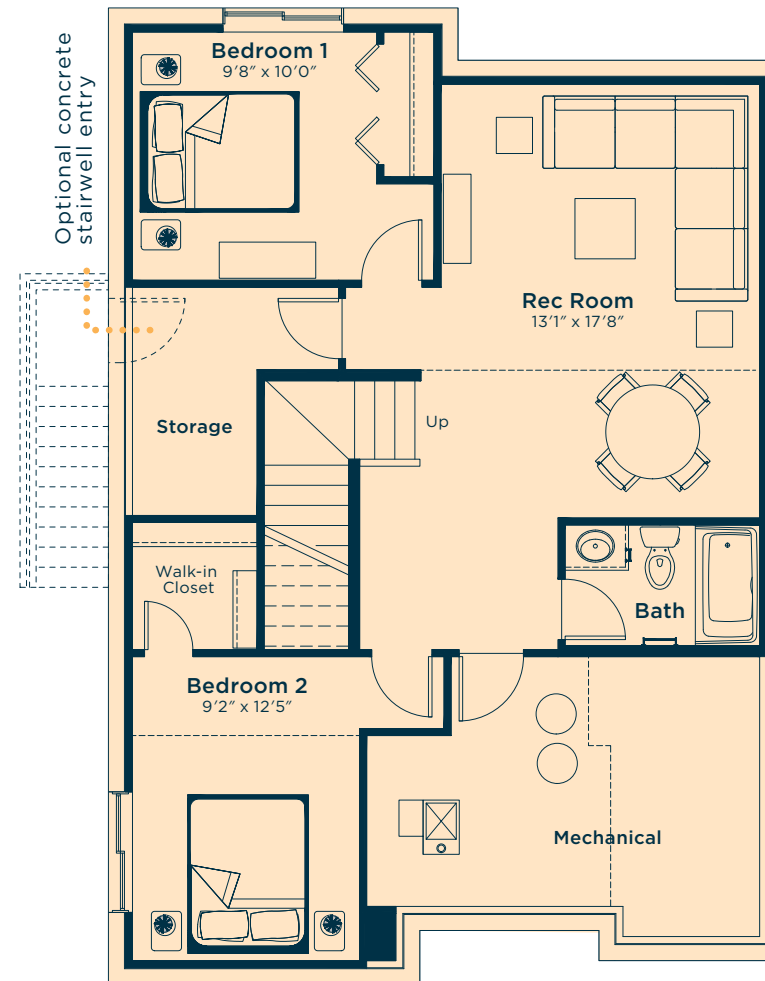


SECOND FLOOR 1431 SQ.FT.

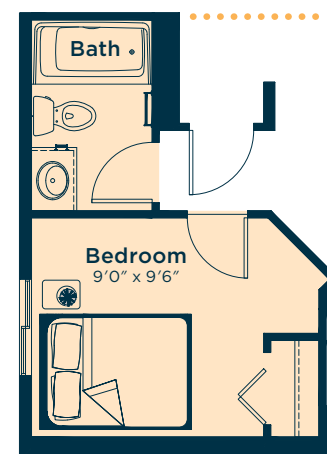


Ask us about these and many more Westhill floor plan options.

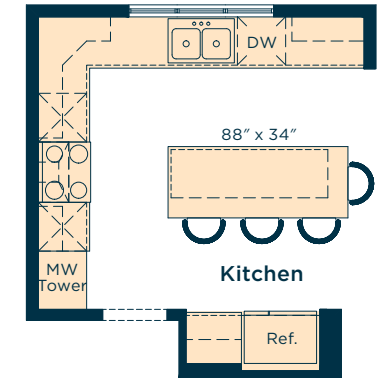
Develop the basement below with two bedrooms, rec room and bath
696 SQ.FT.



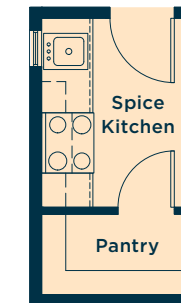
Convert the main floor flex room to a bedroom with full bath



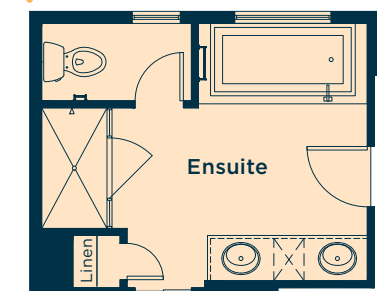
Upgrade the kitchen to Level 2 for a large island, 42" upper cabinets, pots and pans drawers, chimney-style hoodfan, microwave tower and more



Convert the pantry area to a spice kitchen



Upgrade the ensuite to Level 2 for dual sinks, large soaker tub, raised vanity with bank of drawers, fully tiled shower walls and more



Wait... there's more!

- We also have options for fireplaces, rear decks, pot light arrangements, vaulted ceilings, alternate basement layouts, railing upgrades and much more!
- Ask your Area Manager to find out more today.