



# Meet the Westhill



FRONT GARAGE  
COLLECTION

2511

SQ.  
FT.

4

2.5

EXCEL  
HOMES



## Striving to make buying a home simple, easier and more enjoyable.

At Excel Homes, our mission is simple: to create a home-buying experience that delivers the most joy and value to our homeowners. For over 35 years, we've built over 14,000 homes in over 80+ communities and received over 75 awards for design and industry excellence. That experience has helped develop a refined homebuying experience that values your time, simplifies the big decisions, and minimizes any stress that can come with building a new home.

At Excel, the experience of building your home will be exciting, easy and memorable throughout the entire process.



KINCENTRIC  
Best Employer  
NORTH AMERICA 2023

BILD  
CALGARY HILL  
AWARDS  
WINNER

WINNER  
AWARDS  
OF EXCELLENCE  
IN WESTERN  
CANADA

BuiltGreen

Avid  
Ratings

ALBERTA  
NEW HOME WARRANTY  
PROGRAM

EXCELHOMES.CA

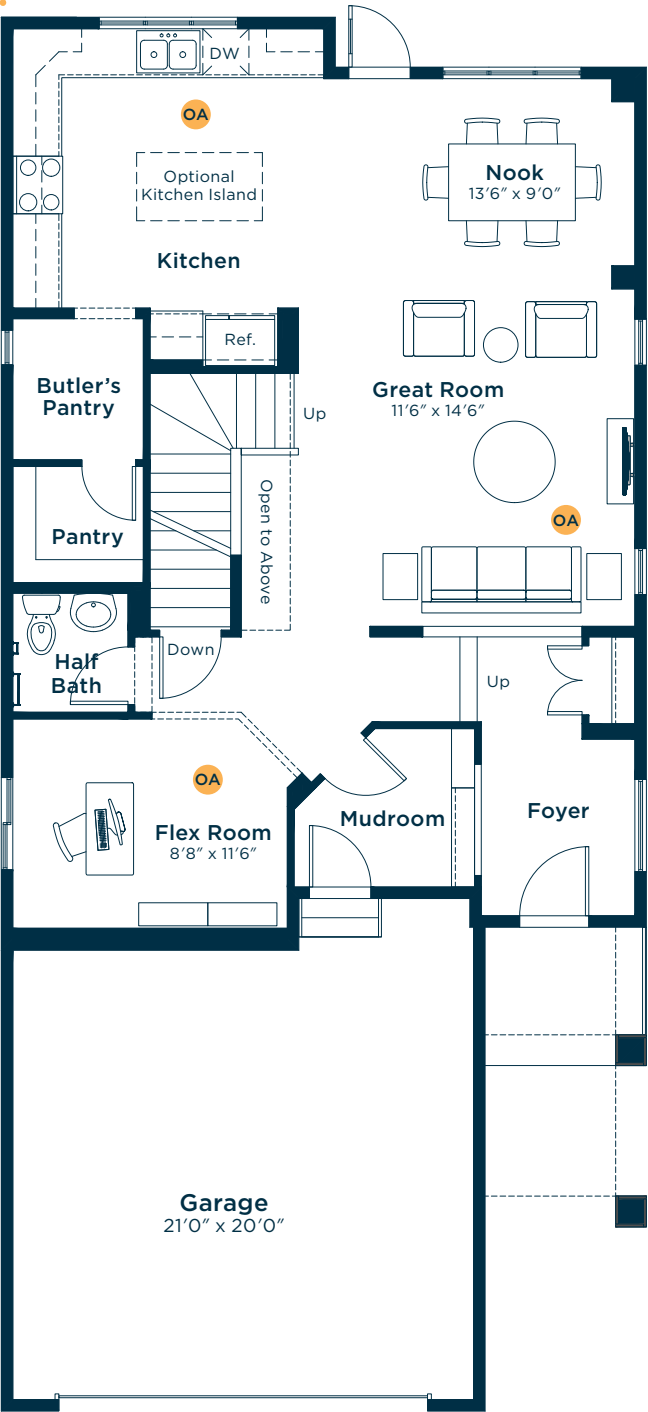
Simplifying your journey home.



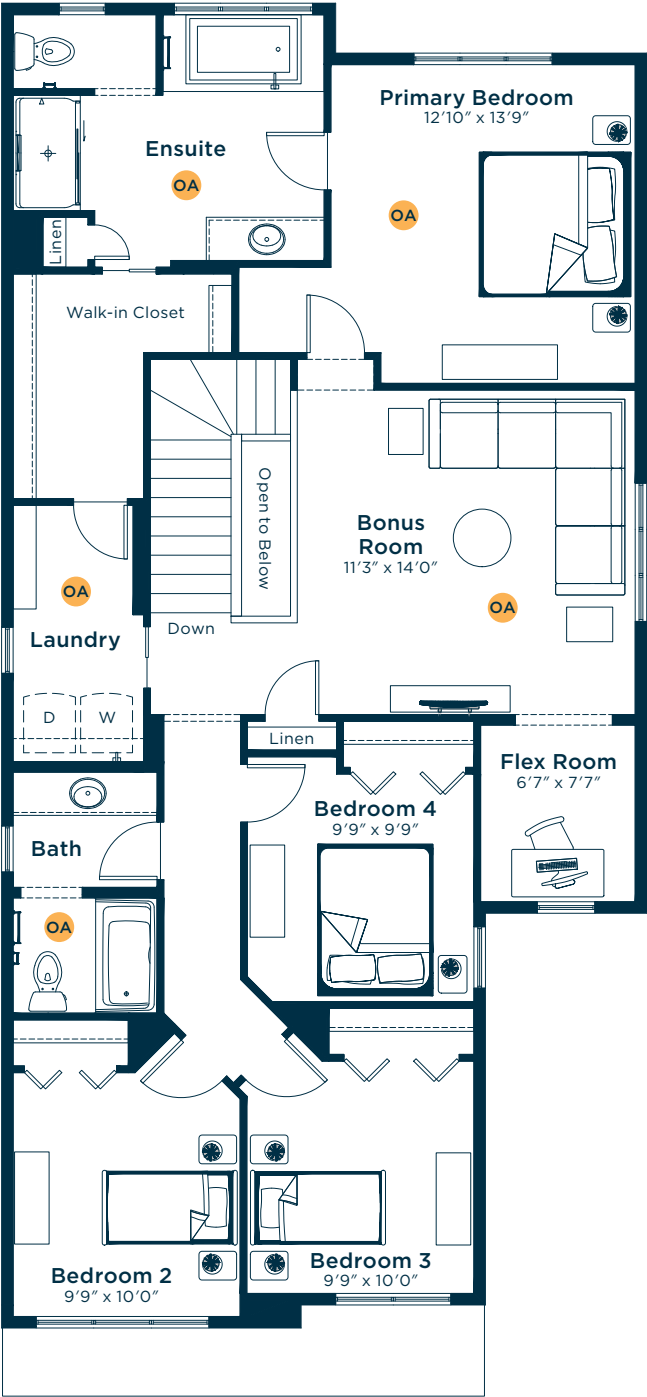
Meet the  
Westhill

OA OPTIONS AVAILABLE

MAIN FLOOR  
1080 SQ.FT.

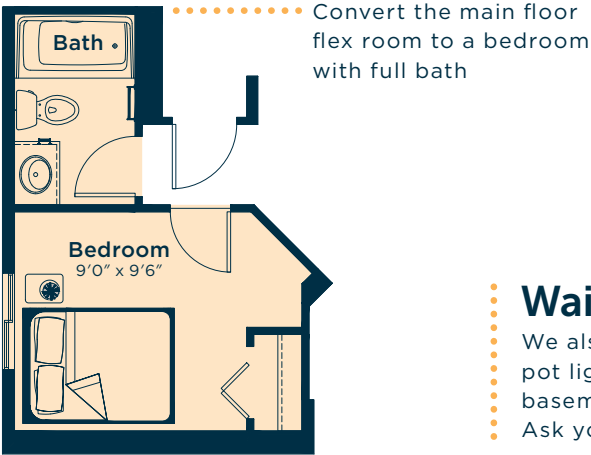
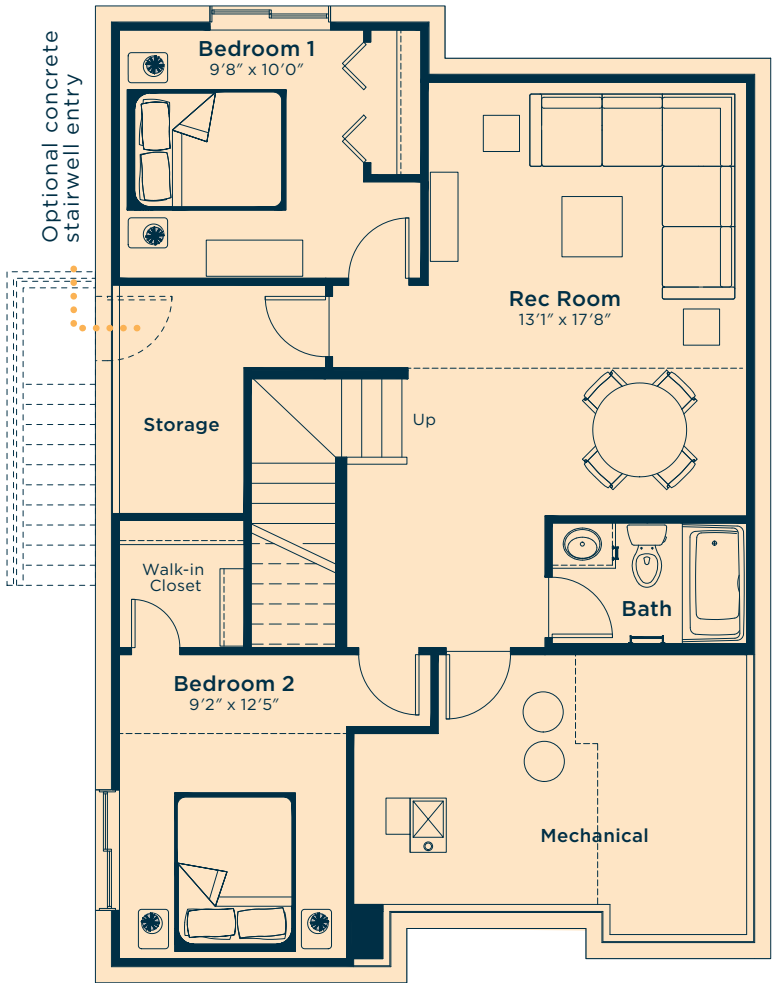


SECOND FLOOR  
1431 SQ.FT.



Ask us about these and  
many more Westhill  
floor plan options.

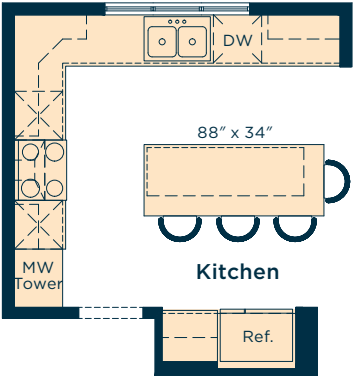
Develop the basement below with  
two bedrooms, rec room and bath  
696 SQ.FT.



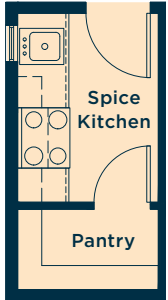
Wait... there's more!

We also have options for fireplaces, rear decks, pot light arrangements, vaulted ceilings, alternate basement layouts, railing upgrades and much more! Ask your Area Manager to find out more today.

Upgrade the kitchen to Level 2 for a large island, 42" upper cabinets, pots and pans drawers, chimney-style hoodfan, microwave tower and more



Convert the pantry area to a spice kitchen



Upgrade the ensuite to Level 2 for dual sinks, large soaker tub, raised vanity with bank of drawers, fully tiled shower walls and more

