

Meet the Mason II



FRONT GARAGE
COLLECTION

2279 SQ.
FT.

3

2.5



**Striving to make buying
a home simple, easier and
more enjoyable.**

At Excel Homes, our mission is simple: to create a home-buying experience that delivers the most joy and value to our homeowners. For over 35 years, we've built over 14,000 homes in over 80+ communities and received over 75 awards for design and industry excellence. That experience has helped develop a refined homebuying experience that values your time, simplifies the big decisions, and minimizes any stress that can come with building a new home.

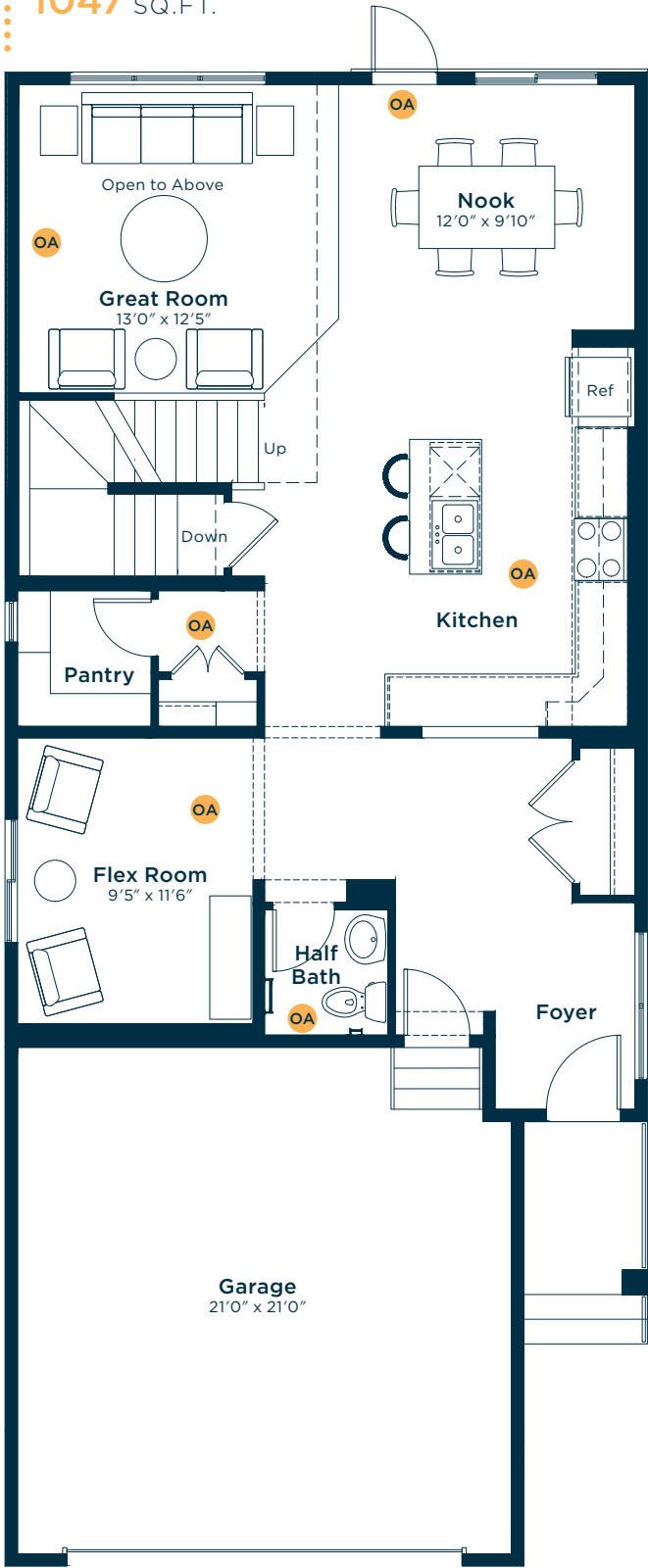
At Excel, the experience of building your home will be exciting, easy and memorable throughout the entire process.



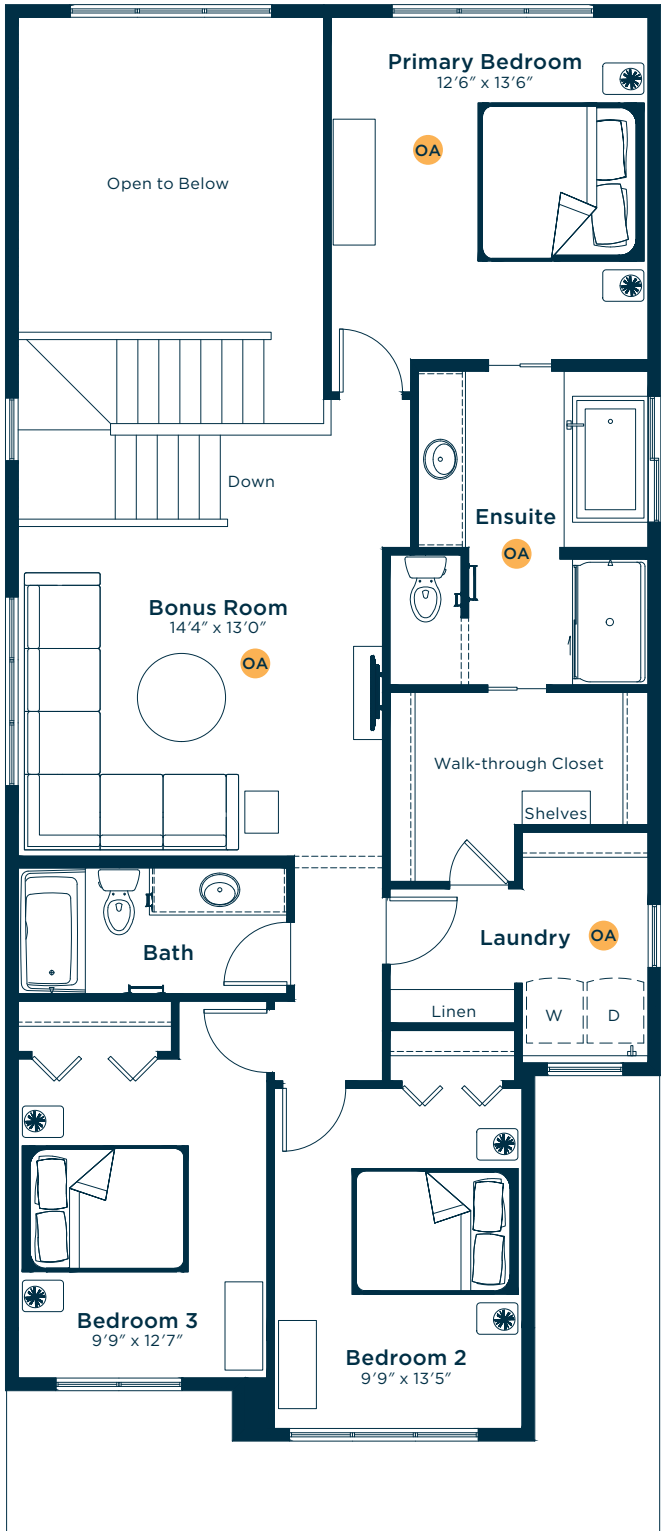
Meet the
Mason II

OA OPTIONS AVAILABLE

MAIN FLOOR
1047 SQ.FT.

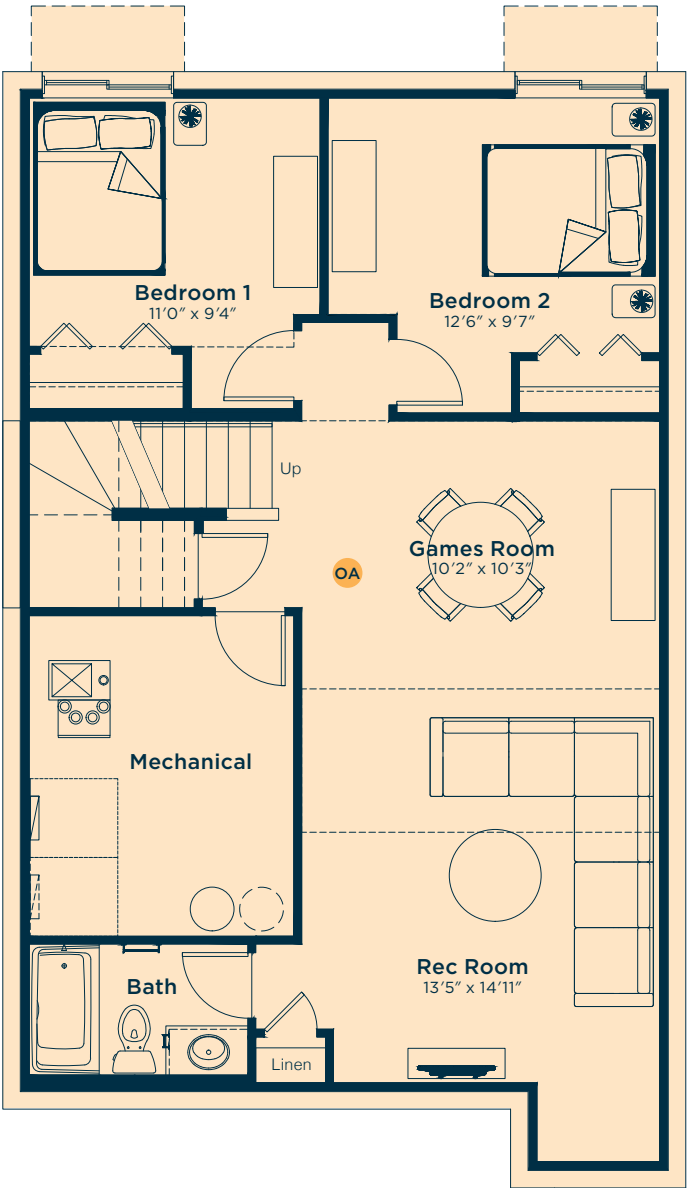


SECOND FLOOR
1232 SQ.FT.



Ask us about these and
many more Mason II
floor plan options.

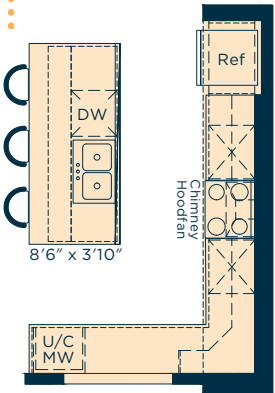
Develop the basement below with
two extra bedrooms, rec room and bath
775 SQ.FT.



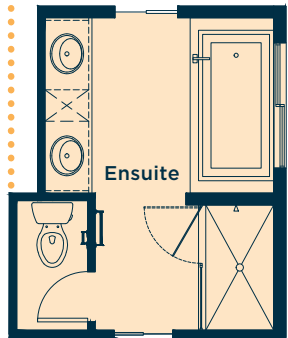
Wait... there's more!

We also have options for fireplaces,
pot light arrangements, laundry,
vaulted ceilings, railing upgrades
and much more! Ask your Area
Manager to find out more today.

Upgrade the kitchen to Level 2 for a
longer island, 42" upper cabinets, pots
and pans drawers, chimney-style hoodfan,
undercounter microwave and more



Upgrade the ensuite to Level 2
for dual sinks, large soaker tub,
raised vanity with bank of drawers,
fully tiled shower walls and more



Convert the flex room and half
bath to a main floor bedroom
with pocket door-accessible
full bath

