

Meet the  
**Mason**



FRONT GARAGE  
COLLECTION

**2073** SQ.  
FT.

**3**



**2.5**



Striving to make buying  
a home simple, easier and  
**more enjoyable.**

At Excel Homes, our mission is simple: to create a home-buying experience that delivers the most joy and value to our homeowners. For over 35 years, we've built over 14,000 homes in over 80+ communities and received over 75 awards for design and industry excellence. That experience has helped develop a refined homebuying experience that values your time, simplifies the big decisions, and minimizes any stress that can come with building a new home.

At Excel, the experience of building your home will be exciting, easy and memorable throughout the entire process.

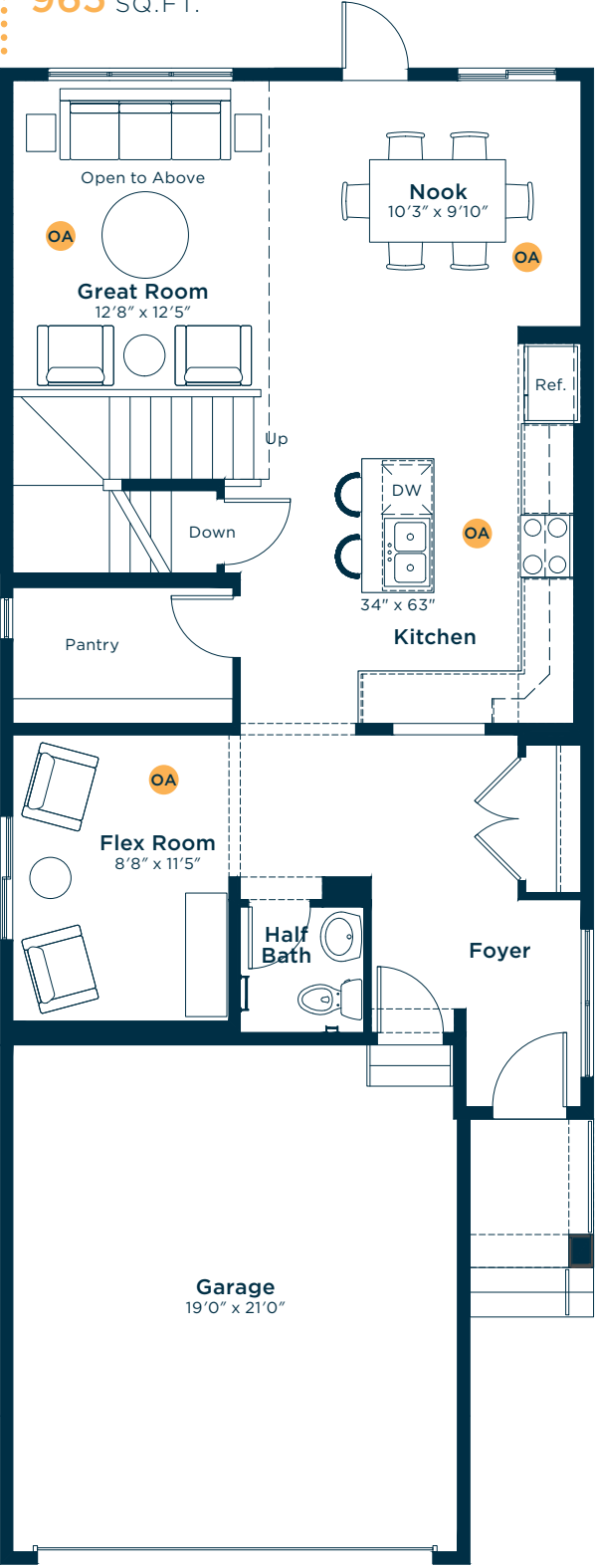




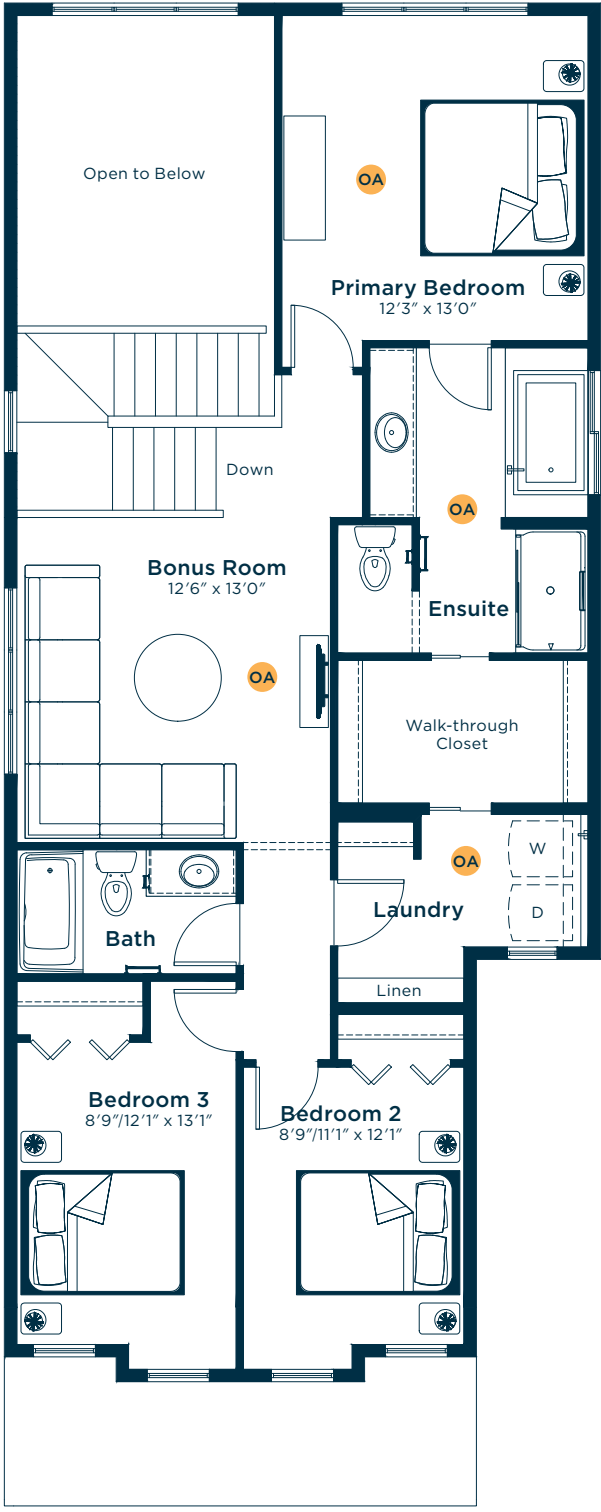
# Meet the Mason

OA OPTIONS AVAILABLE

## MAIN FLOOR 965 SQ.FT.

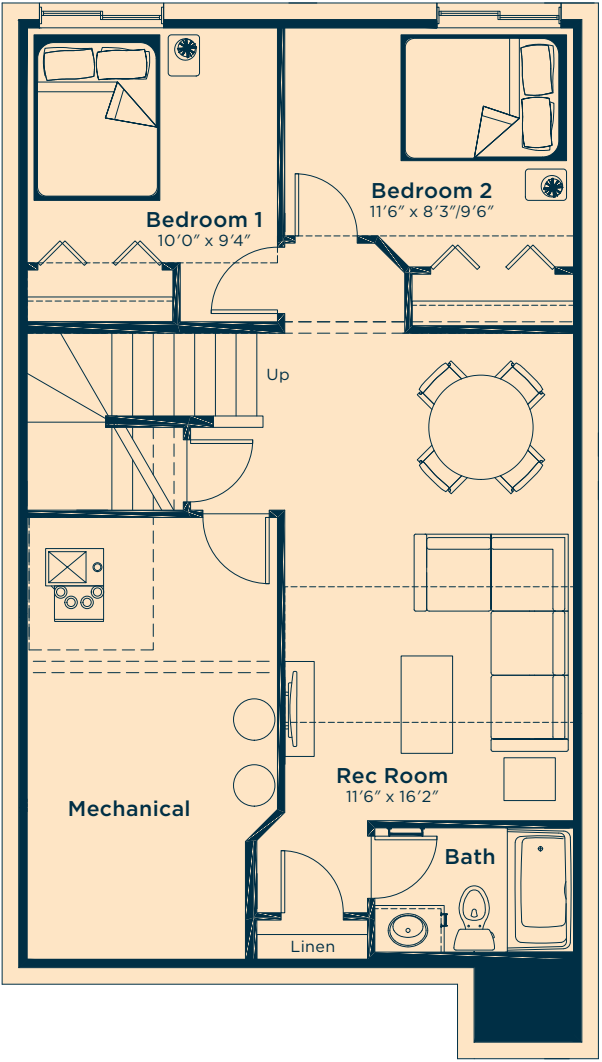


## SECOND FLOOR 1108 SQ.FT.

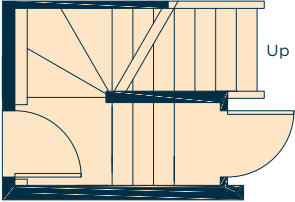


## Ask us about these and many more Mason floor plan options.

Develop the basement below with  
two extra bedrooms, rec room and bath  
**620** SQ.FT.



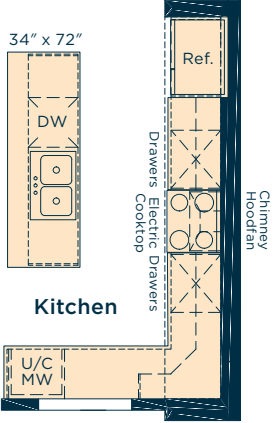
Add an  
optional  
side entry  
location  
in the  
basement



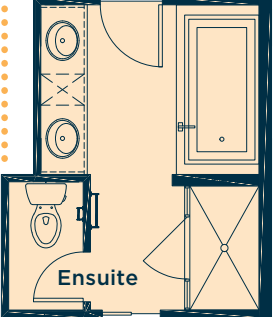
## Wait... there's more!

We also have options for fireplaces, pot light arrangements, laundry, vaulted ceilings, railing upgrades and much more! Ask your Area Manager to find out more today.

Upgrade the kitchen to Level 2 for a longer island, 42" upper cabinets, pots and pans drawers, chimney-style hoodfan, undercounter microwave and more



Upgrade the ensuite to Level 2 for dual sinks, large soaker tub, raised vanity with bank of drawers, fully tiled shower walls and more



Convert the flex room and half bath to a main floor bedroom with pocket door-accessible full bath

