

Meet the  
**Laurel**



DUPLEX  
COLLECTION

**1800** SQ.  
FT.

**3**

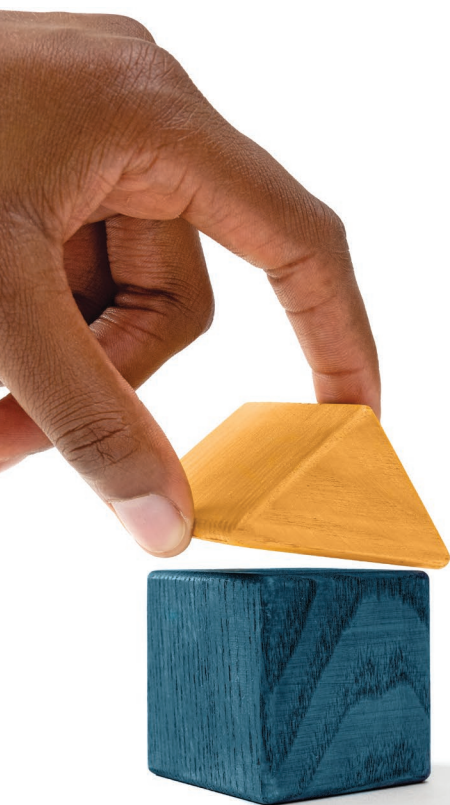
**2.5**



**Striving to make buying  
a home simple, easier and  
more enjoyable.**

At Excel Homes, our mission is simple: to create a home-buying experience that delivers the most joy and value to our homeowners. For over 35 years, we've built over 15,000 homes in over 80+ communities and received over 75 awards for design and industry excellence. That experience has helped develop a refined homebuying experience that values your time, simplifies the big decisions, and minimizes any stress that can come with building a new home.

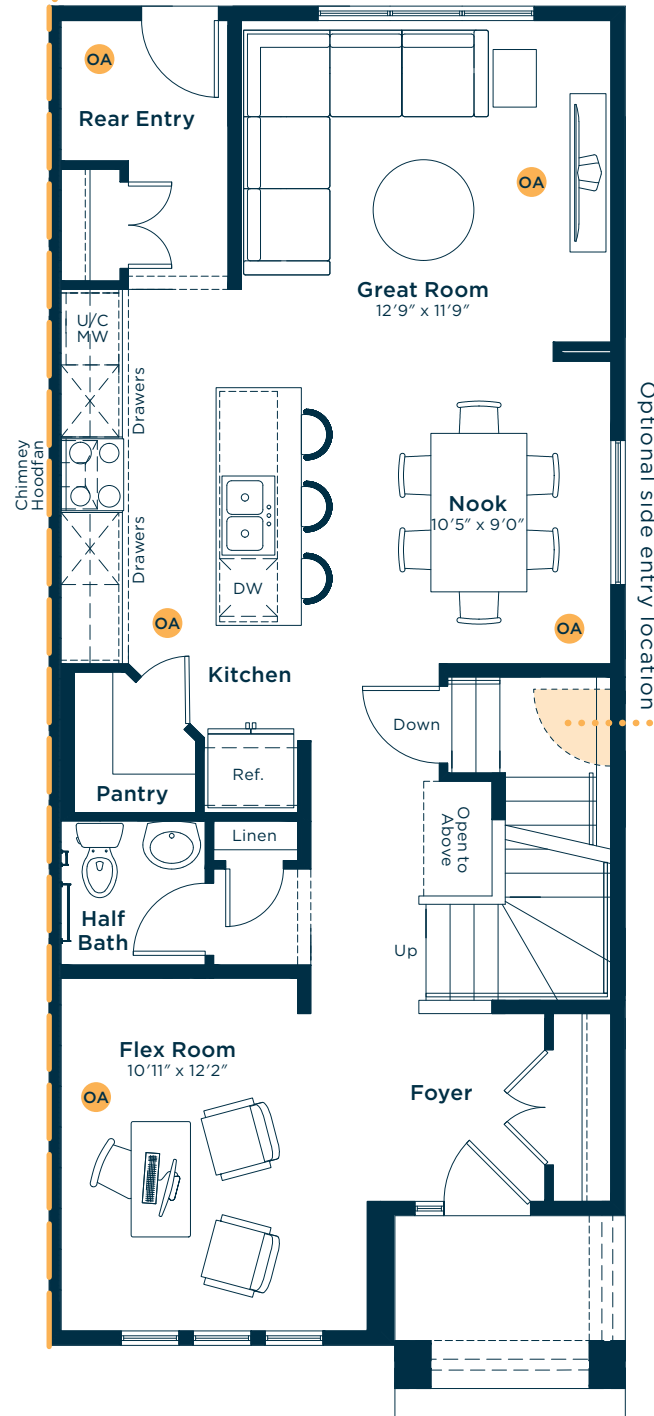
At Excel, the experience of building your home will be exciting, easy and memorable throughout the entire process.



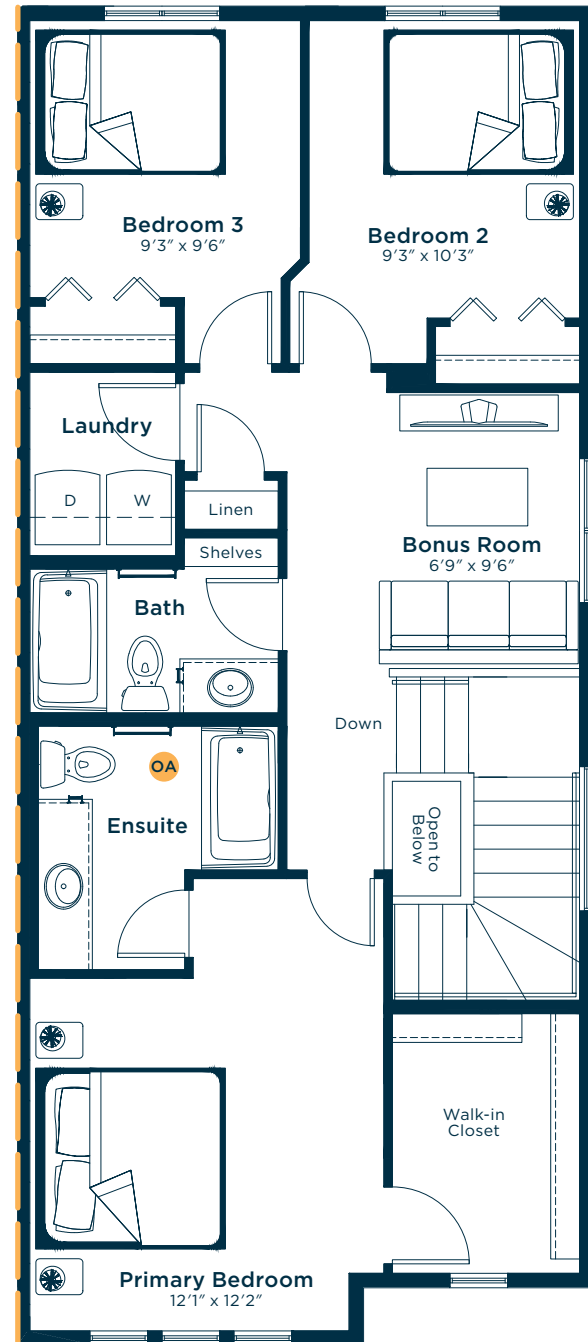
# Meet the Laurel

OA OPTIONS AVAILABLE

MAIN FLOOR  
895 SQ.FT.

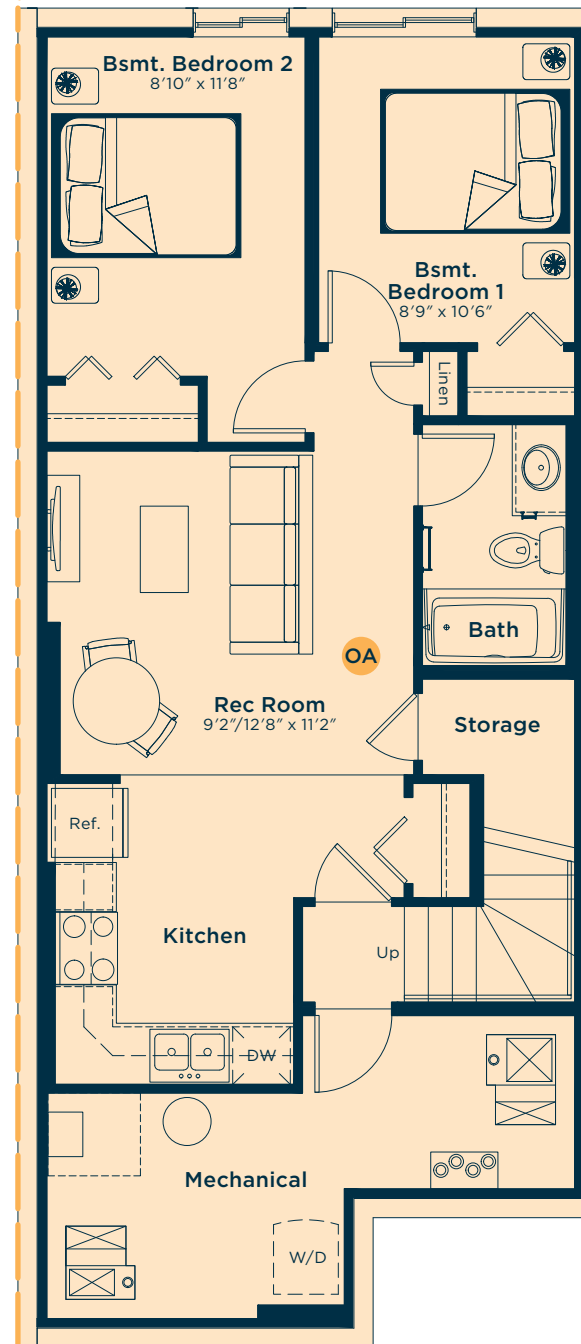


SECOND FLOOR  
905 SQ.FT.

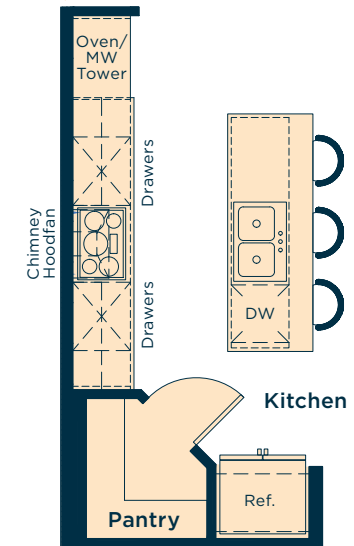


## Ask us about these and many more Laurel floor plan options.

Develop a basement suite below with two bedrooms, kitchen, rec room and bath  
636 SQ.FT.



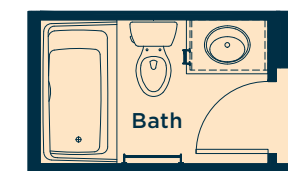
Upgrade the kitchen to Level 1 for an extra pots & pans drawer, microwave/wall oven tower with trim kit, and electric cooktop with lower base cabinet



Convert the main floor flex room to a bedroom



Convert the main floor half bath to a full bath



**Wait... there's more!**  
We also have options for fireplaces, rear decks, pot light arrangements, railing and much more! Ask your Area Manager to find out more today.