



Meet the  
**Lakeview**



FRONT GARAGE  
COLLECTION

**1930** SQ.  
FT.

**3** 

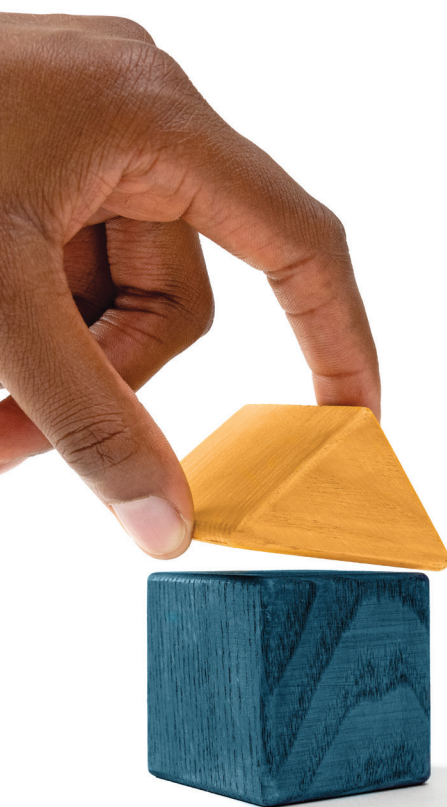
**2.5** 



Striving to make buying  
a home simple, easier and  
**more enjoyable.**

At Excel Homes, our mission is simple: to create a home-buying experience that delivers the most joy and value to our homeowners. For over 35 years, we've built over 14,000 homes in over 80+ communities and received over 75 awards for design and industry excellence. That experience has helped develop a refined homebuying experience that values your time, simplifies the big decisions, and minimizes any stress that can come with building a new home.

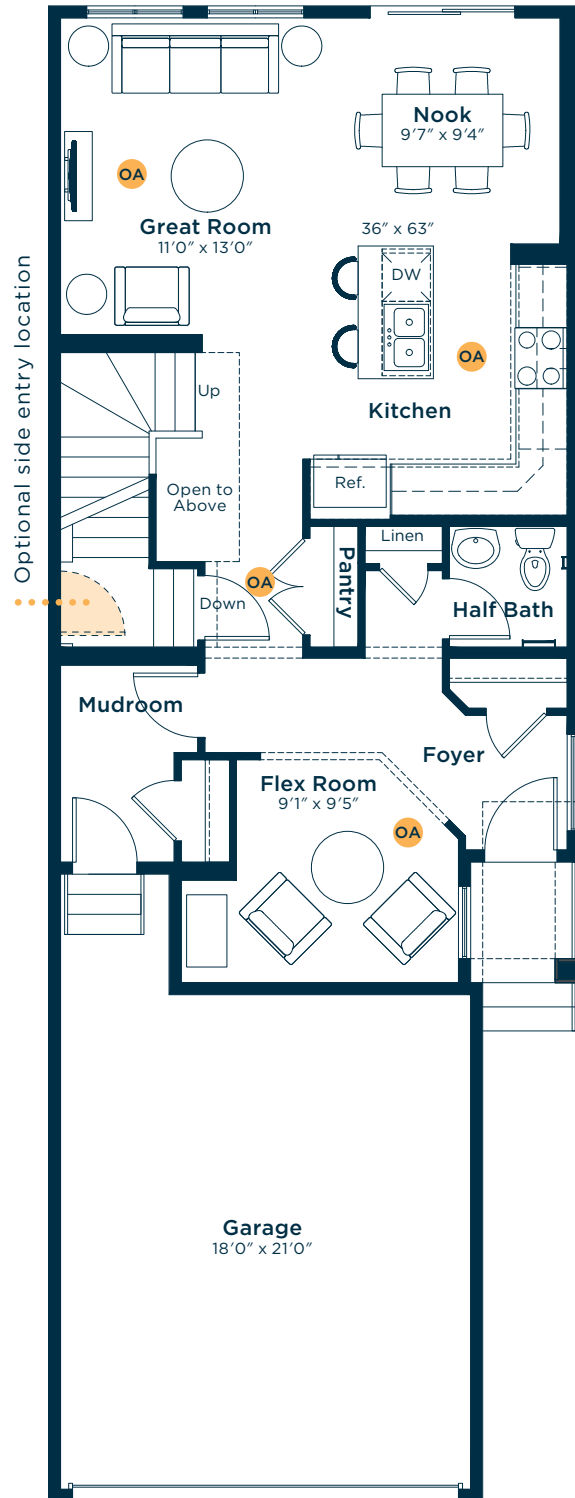
At Excel, the experience of building your home will be exciting, easy and memorable throughout the entire process.



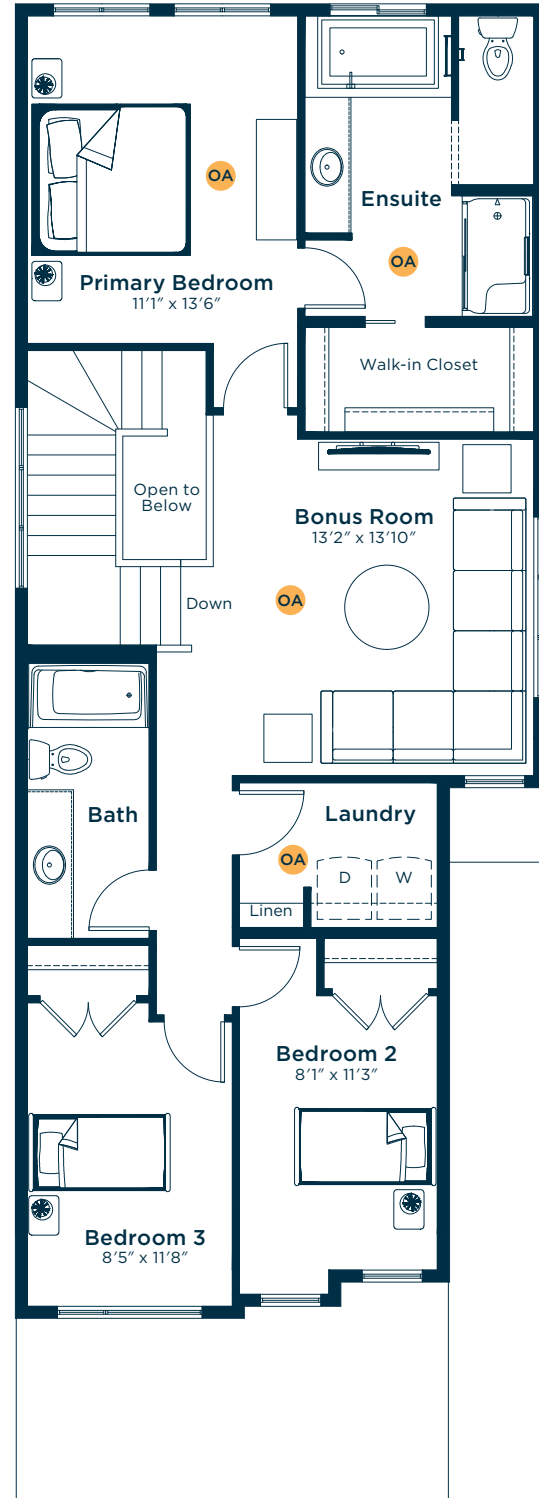
# Meet the Lakeview

OA OPTIONS AVAILABLE

## MAIN FLOOR 852 SQ.FT.

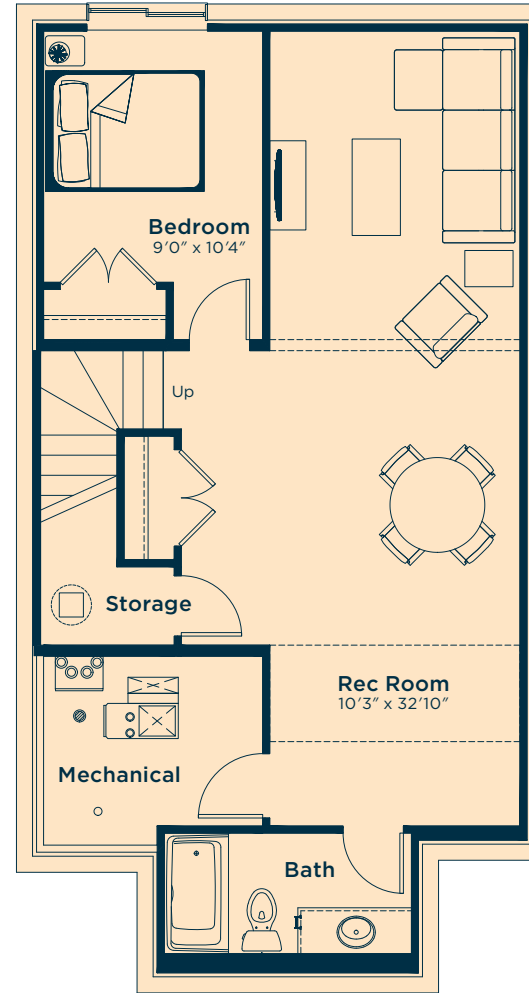


## SECOND FLOOR 1078 SQ.FT.

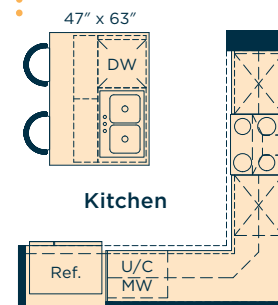


## Ask us about these and many more Lakeview floor plan options.

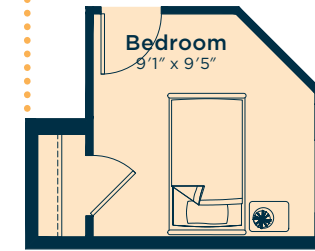
Develop the basement below with an extra bedroom, rec room, games area and bath  
638 SQ.FT.



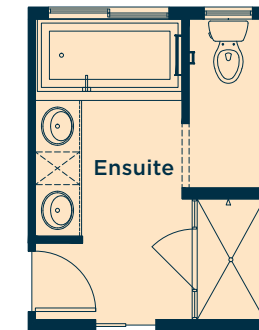
Upgrade the kitchen to Level 2 for a larger island, 42" upper cabinets, chimney-style hoodfan, under counter built-in microwave and more



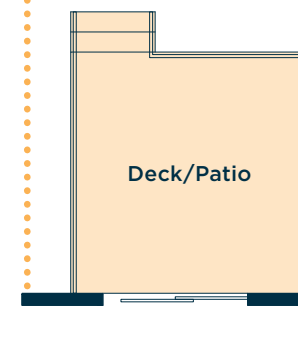
Convert the flex room to a main floor bedroom



Upgrade the ensuite to Level 2 for dual sinks, large soaker tub, raised vanity with bank of drawers, fully tiled shower walls and more



Add a rear deck/patio with stairs to the backyard



## Wait... there's more!

We also have options for fireplaces, rear decks, pot light arrangements, vaulted ceilings, railing and much more! Ask your Area Manager to find out more today.