



Meet the
Lakeside



FRONT GARAGE
COLLECTION

1945 SQ.
FT.

3 

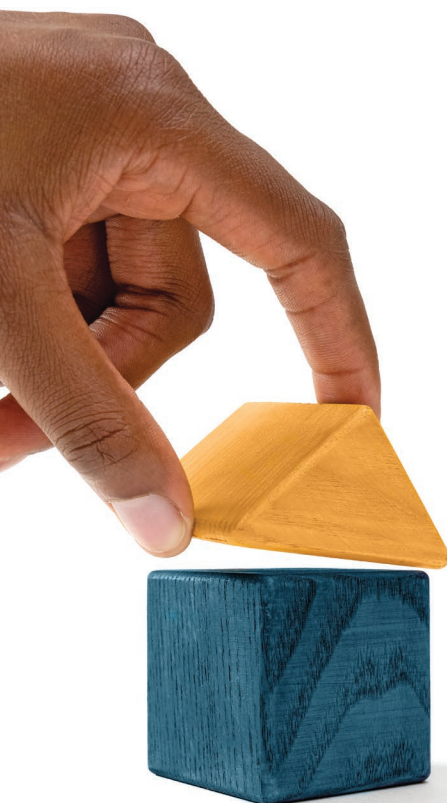
2.5 



**Striving to make buying
a home simple, easier and
more enjoyable.**

At Excel Homes, our mission is simple: to create a home-buying experience that delivers the most joy and value to our homeowners. For over 35 years, we've built over 15,000 homes in over 80+ communities and received over 75 awards for design and industry excellence. That experience has helped develop a refined home buying experience that values your time, simplifies the big decisions, and minimizes any stress that can come with building a new home.

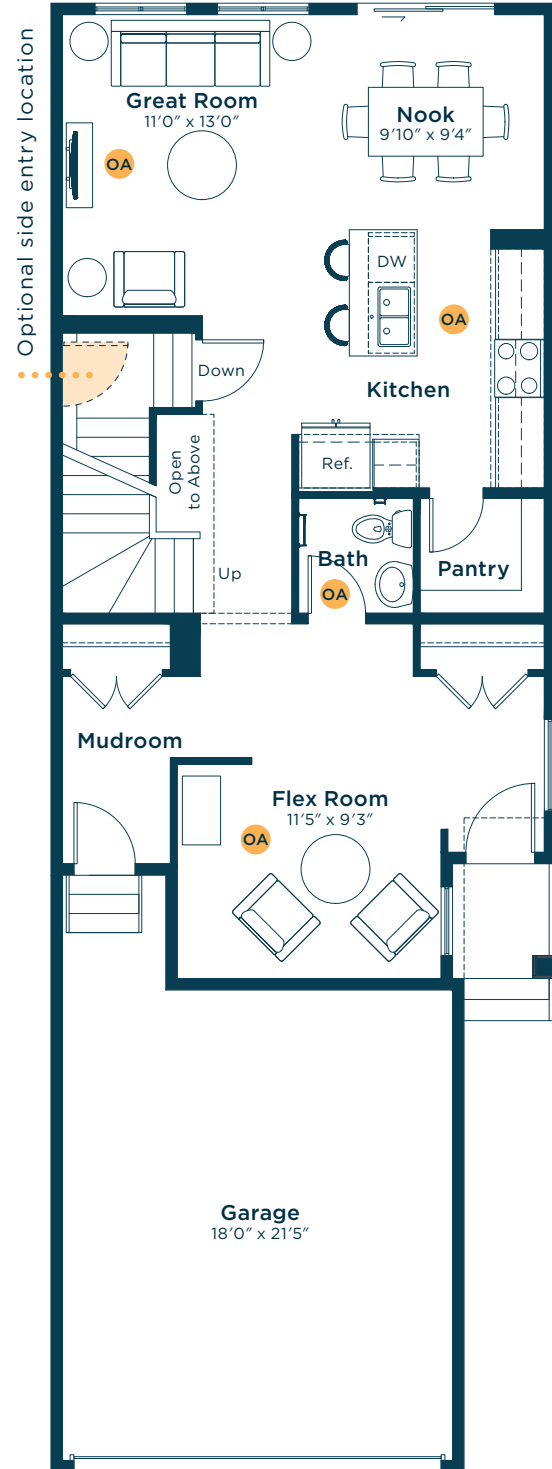
At Excel, the experience of building your home will be exciting, easy and memorable throughout the entire process.



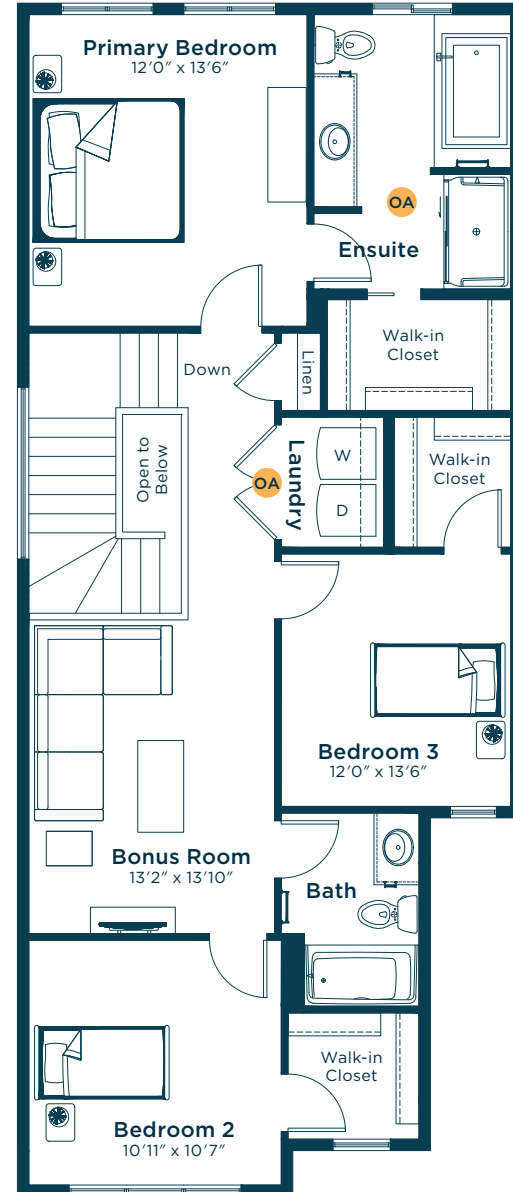
Meet the Lakeside

OA OPTIONS AVAILABLE

MAIN FLOOR
896 SQ.FT.

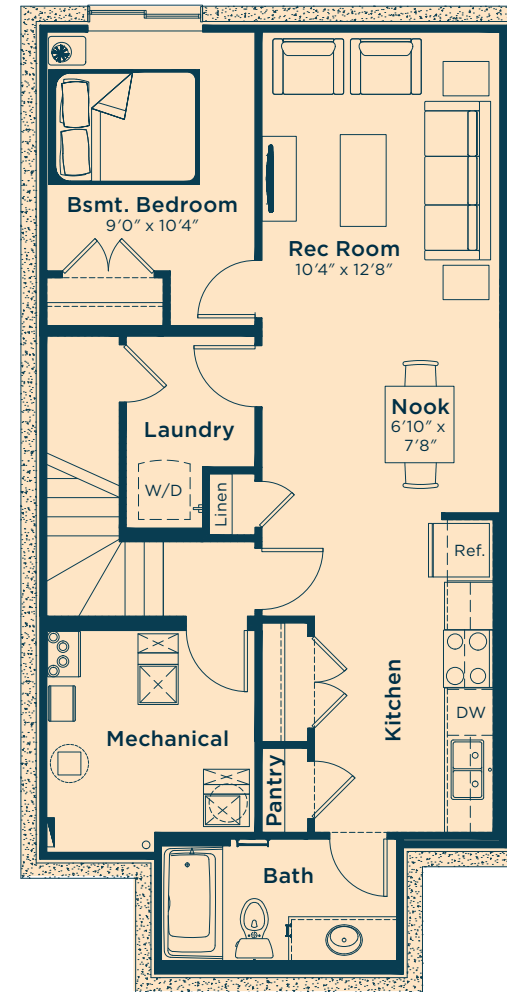


SECOND FLOOR
1049 SQ.FT.

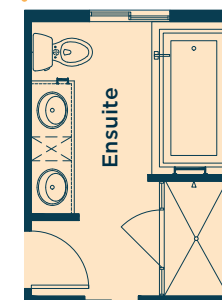


Ask us about these and many more Lakeside floor plan options.

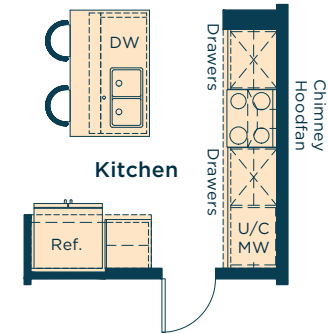
Develop a basement suite below with one bedroom, rec room, kitchen and bath
667 SQ.FT.



Upgrade the ensuite to Level 2 for dual sinks, large soaker tub, raised vanity with bank of drawers, fully tiled shower walls and more



Upgrade the kitchen to Level 2 for a larger island, 42" upper cabinets, chimney-style hoodfan, under counter built-in microwave and more



Convert the flex room to a main floor bedroom



Add a full bath in lieu of the half bath on the main floor



Wait... there's more!

We also have options for basement developments, kitchen options, railing and much more! Ask your Area Manager to find out more today.