

Meet the  
**Kenton**



FRONT GARAGE  
COLLECTION

**2259** SQ.  
FT.

**3**



**2.5**



Striving to make buying  
a home simple, easier and  
**more enjoyable.**

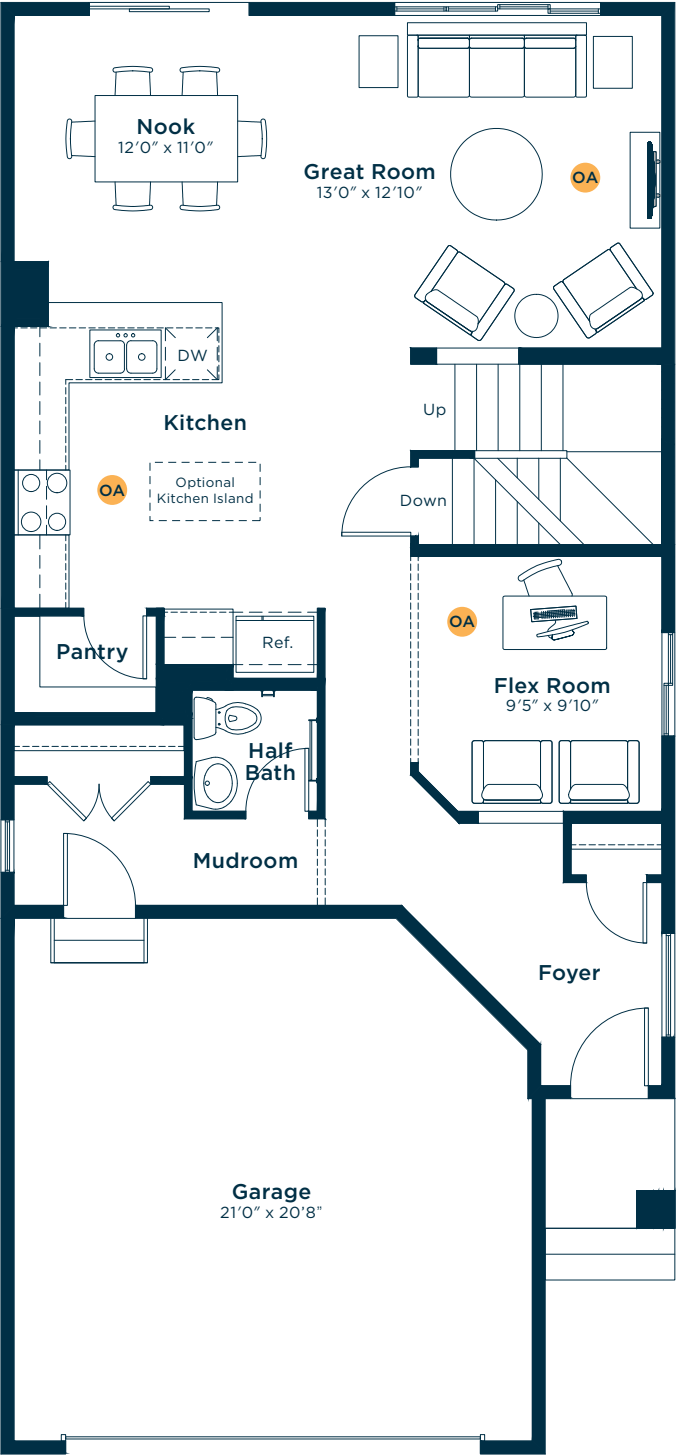
At Excel Homes, our mission is simple: to create a home-buying experience that delivers the most joy and value to our homeowners. For over 35 years, we've built over 14,000 homes in over 80+ communities and received over 75 awards for design and industry excellence. That experience has helped develop a refined homebuying experience that values your time, simplifies the big decisions, and minimizes any stress that can come with building a new home.

At Excel, the experience of building your home will be exciting, easy and memorable throughout the entire process.

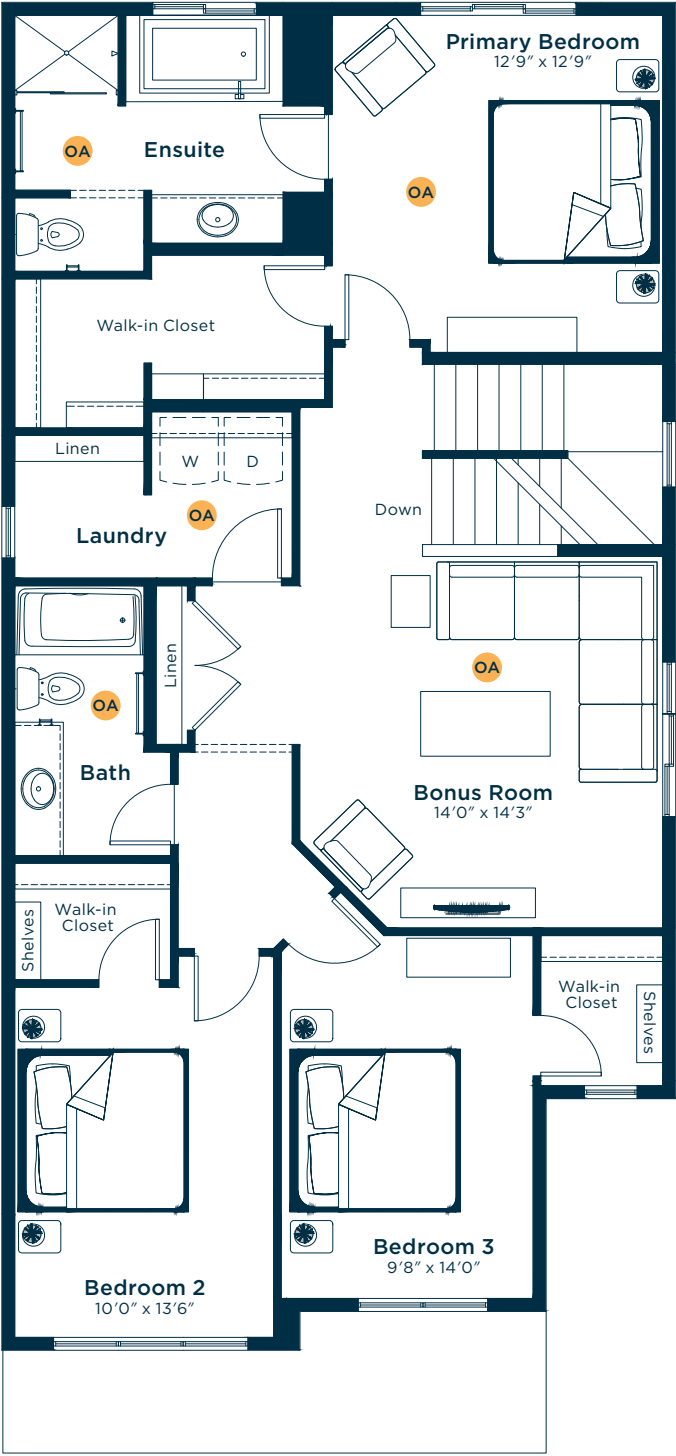


# Meet the Kenton

MAIN FLOOR  
971 SQ.FT.



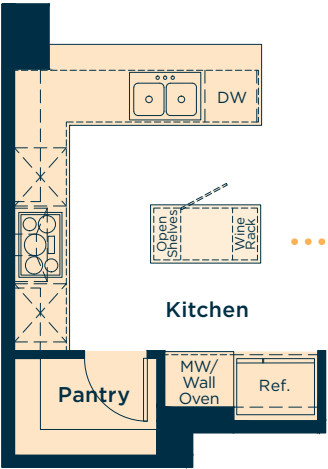
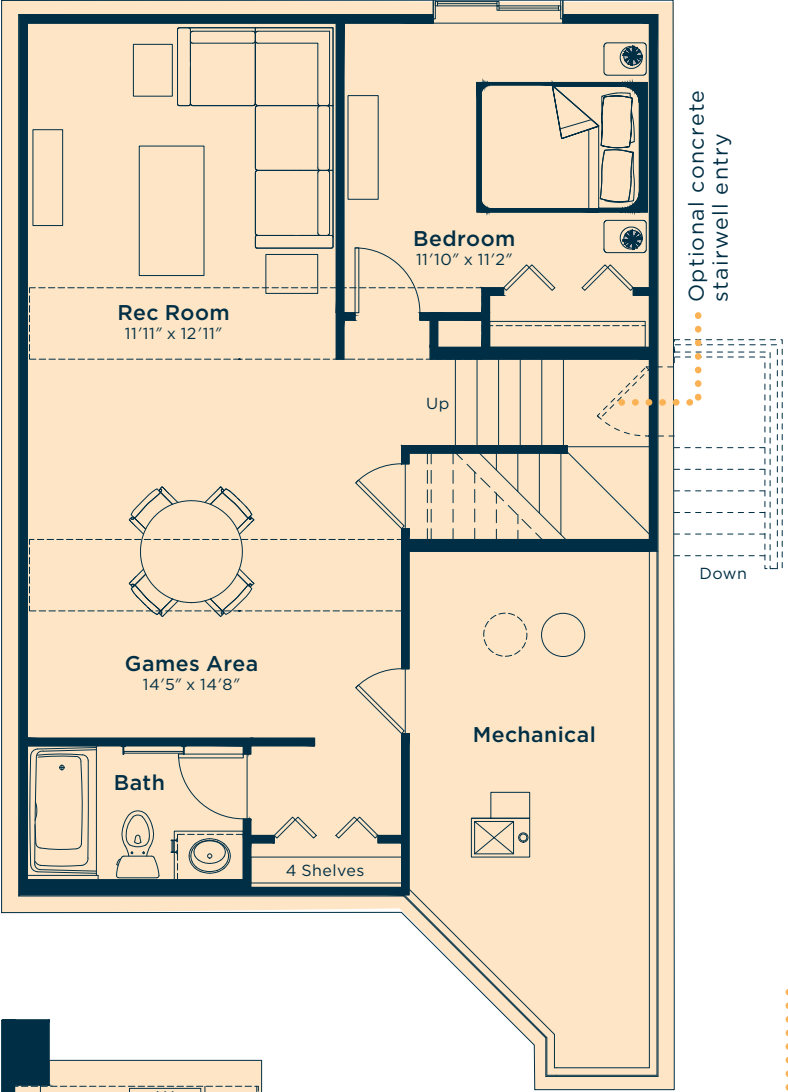
SECOND FLOOR  
1288 SQ.FT.



OA OPTIONS AVAILABLE

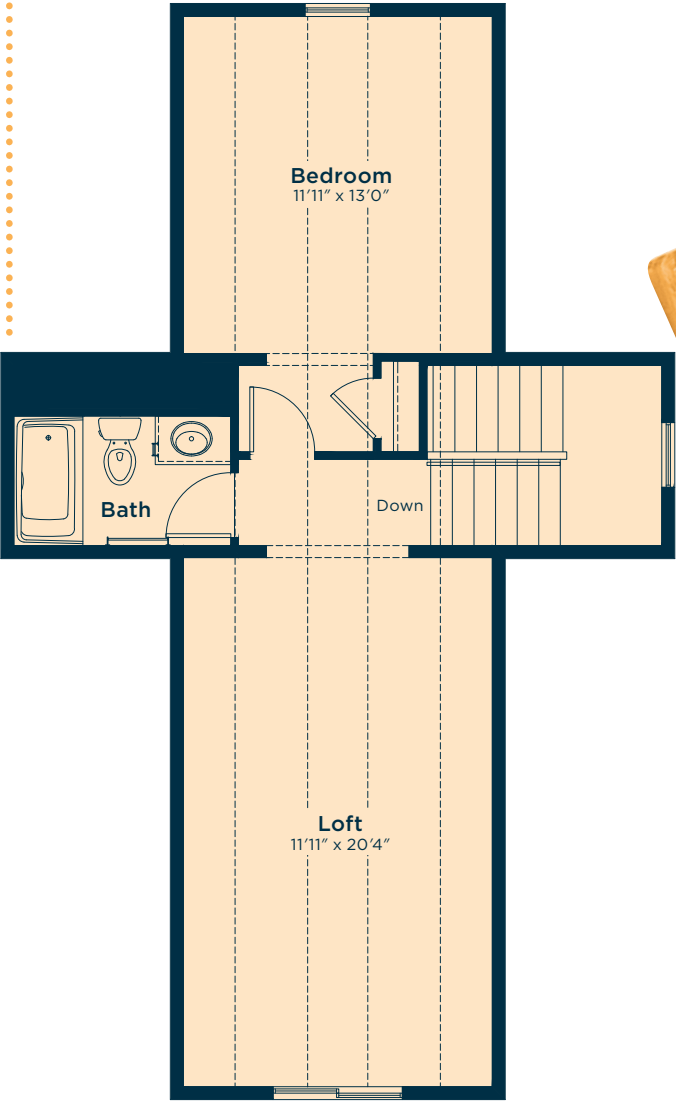
## Ask us about these and many more Kenton floor plan options.

Develop the basement below with an extra bedroom, rec room, games area and bath  
648 SQ.FT.

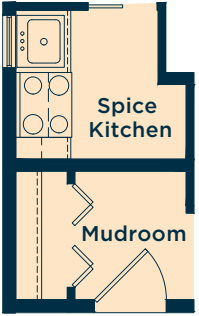


Upgrade the kitchen to Level 3 for an island, 42" upper cabinets, chimney-style hoodfan, built-in microwave wall oven and more

Add a loft level above the second floor  
651 SQ.FT. (dependent on community)



Convert the pantry area to a spice kitchen



### Wait... there's more!

We also have options for fireplaces, rear decks, pot light arrangements, open to below additions, vaulted ceilings, railing and much more! Ask your Area Manager to find out more today.