



# Meet the Hawthorne



FRONT GARAGE  
COLLECTION

2561 SQ.  
FT.

4

2.5

EXCEL  
HOMES

Striving to make buying  
a home simple, easier and  
more enjoyable.

At Excel Homes, our mission is simple: to create a home-buying experience that delivers the most joy and value to our homeowners. For over 35 years, we've built over 15,000 homes in over 80+ communities and received over 75 awards for design and industry excellence. That experience has helped develop a refined homebuying experience that values your time, simplifies the big decisions, and minimizes any stress that can come with building a new home.

At Excel, the experience of building your home will be exciting, easy and memorable throughout the entire process.



Mercer Best Employer  
Canada 2025

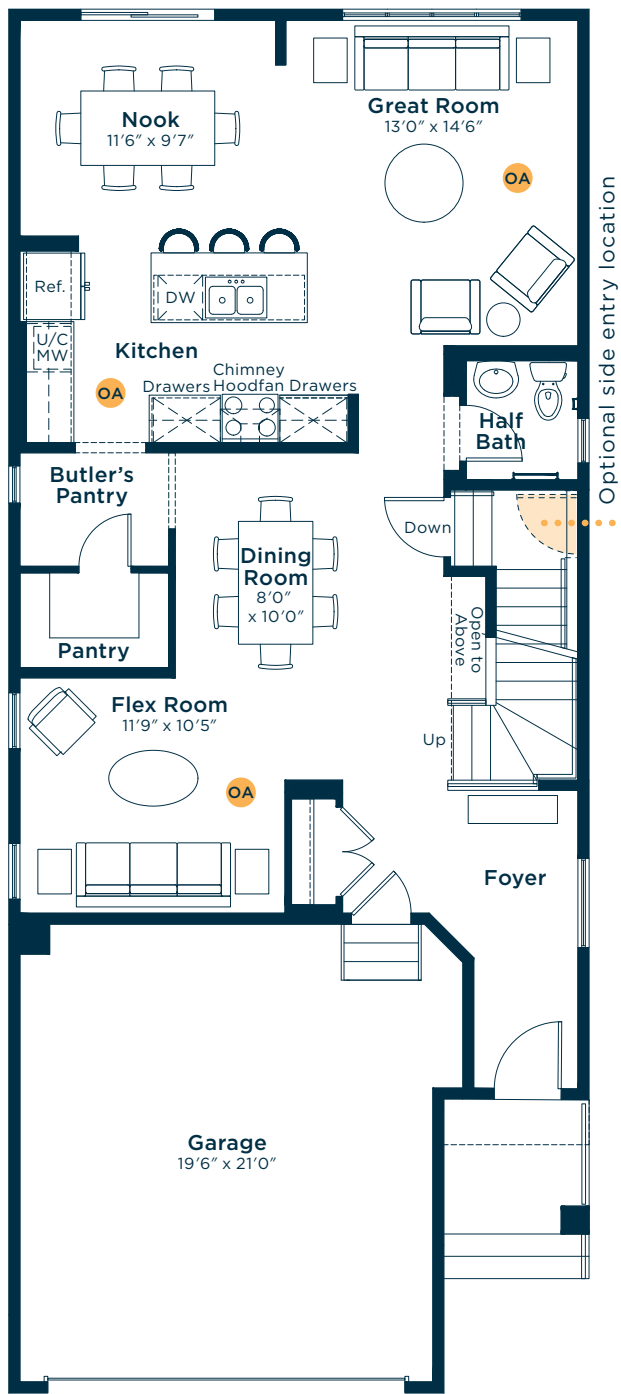
EXCELHOMES.CA Simplifying your journey home.



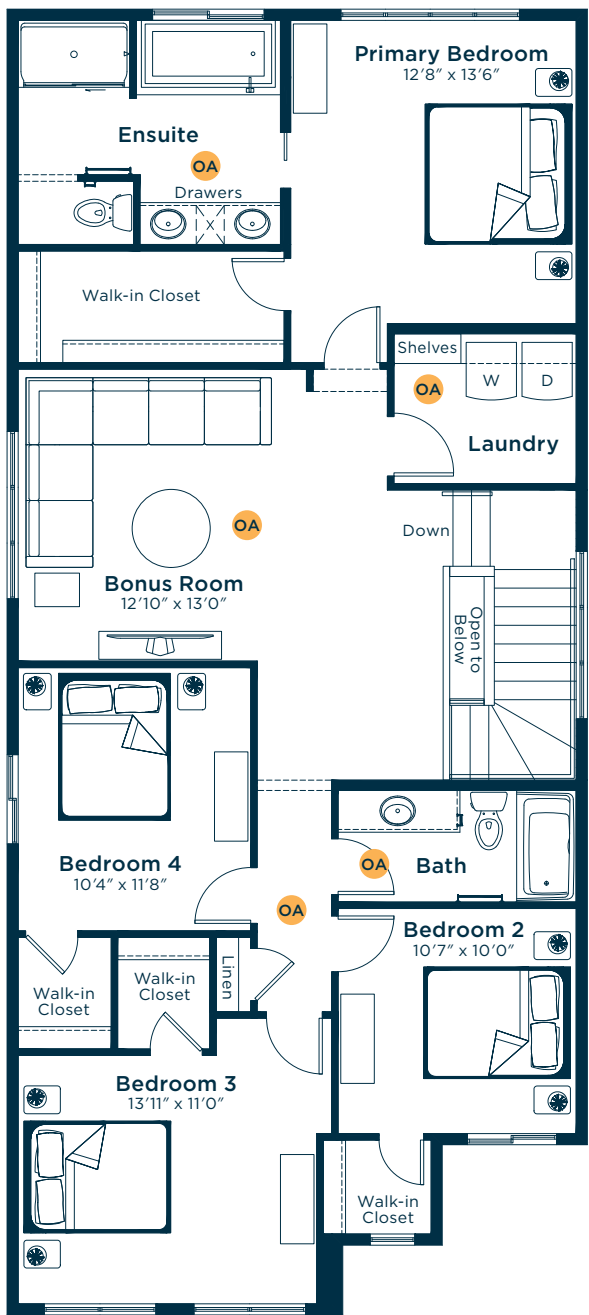
# Meet the Hawthorne

OA OPTIONS AVAILABLE

## MAIN FLOOR 1112 SQ.FT.

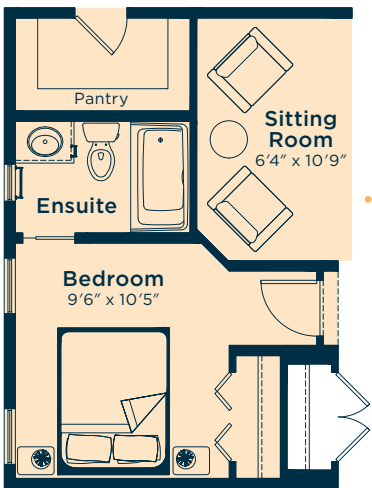
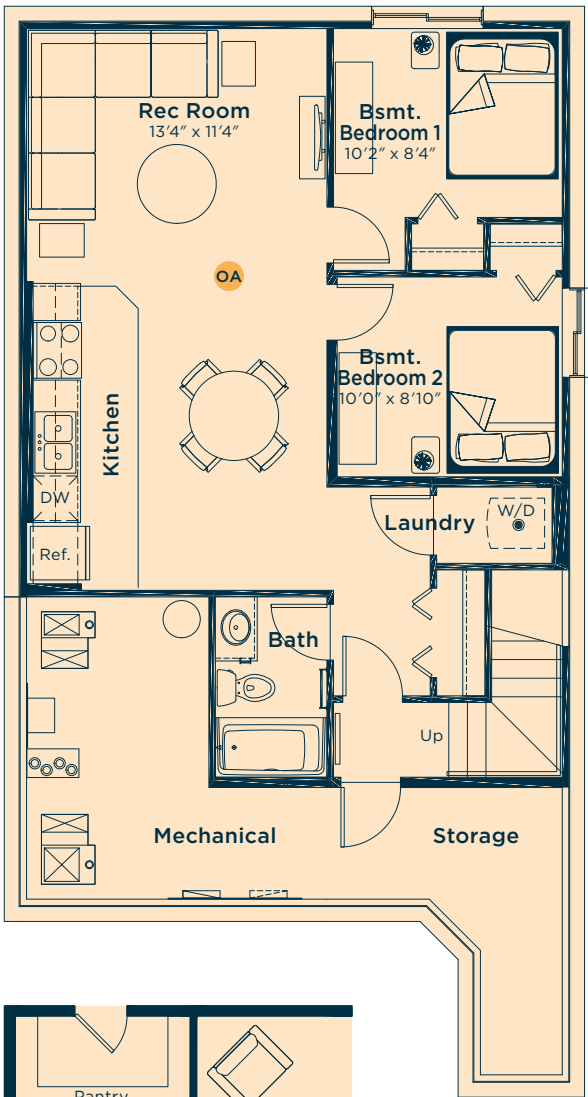


## SECOND FLOOR 1449 SQ.FT.



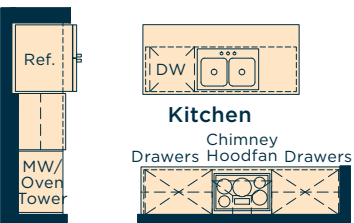
## Ask us about these and many more Hawthorne floor plan options.

Develop a basement suite below with two bedrooms, kitchen, rec room and bath  
763 SQ.FT.

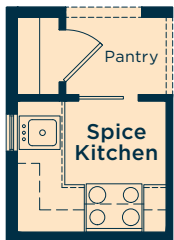


Convert the main floor flex room to a primary bedroom with ensuite and add full pantry to kitchen  
(NOTE: Dining Room is now closed-off and becomes Sitting Room)

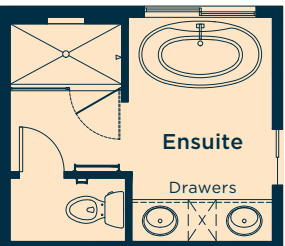
Upgrade the kitchen to Level 1 for an extra pots & pans drawer, microwave/wall oven tower with trim kit, and electric cooktop with lower base cabinet



Convert the pantry area to a spice kitchen



Upgrade the ensuite to Level 1 for a freestanding soaker tub, shower unit with fully tiled walls/acrylic base/swinging door/chrome frame, raised vanity height, and second sink/bank of drawers to vanity



Add an ensuite to Bedroom 3  
(NOTE: Walk-in closets for Bedroom 3 and 4 are removed)



## Wait... there's more!

We also have options for fireplaces, rear decks, pot light arrangements, vaulted ceilings, railing and much more! Ask your Area Manager to find out more today.