



Meet the
Harper

 LANED COLLECTION **1861** SQ. FT. **3**  **2.5** 

Striving to make buying a home simple, easier and more enjoyable.

At Excel Homes, our mission is simple: to create a home-buying experience that delivers the most joy and value to our homeowners. For over 35 years, we've built over 15,000 homes in over 80+ communities and received over 75 awards for design and industry excellence. That experience has helped develop a refined homebuying experience that values your time, simplifies the big decisions, and minimizes any stress that can come with building a new home.

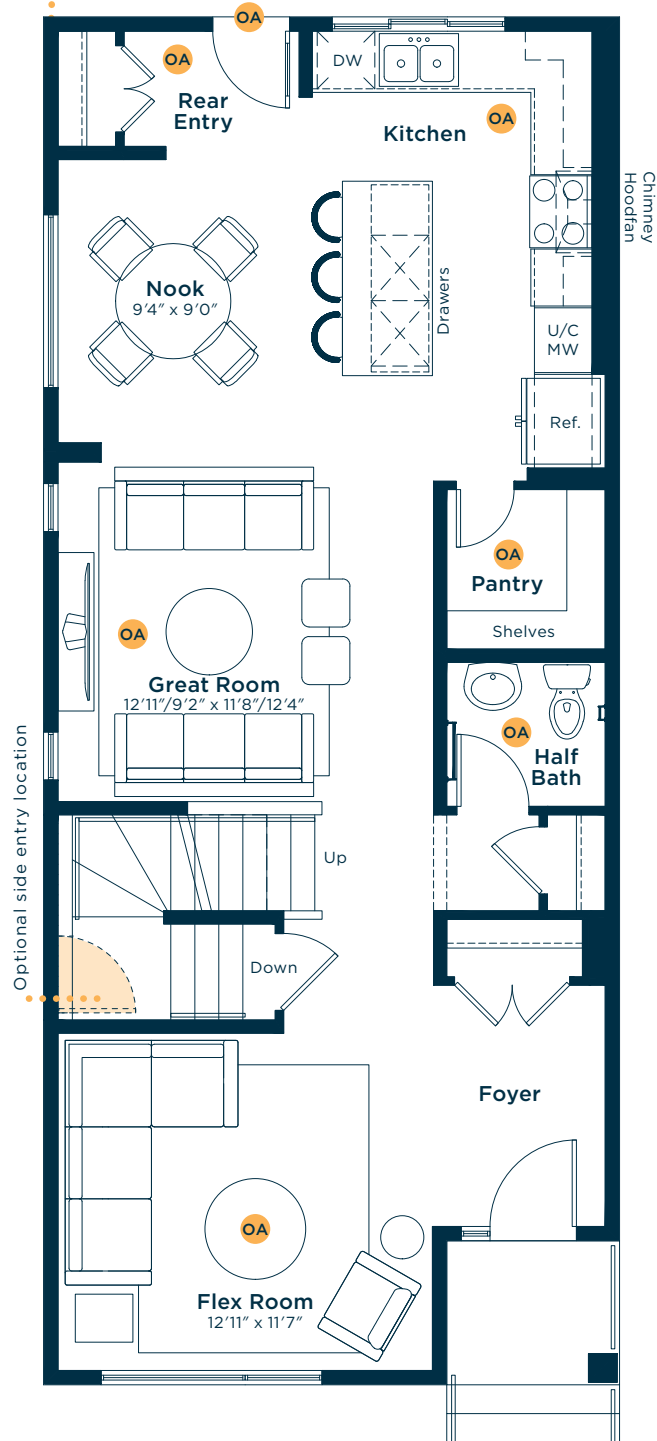
At Excel, the experience of building your home will be exciting, easy and memorable throughout the entire process.



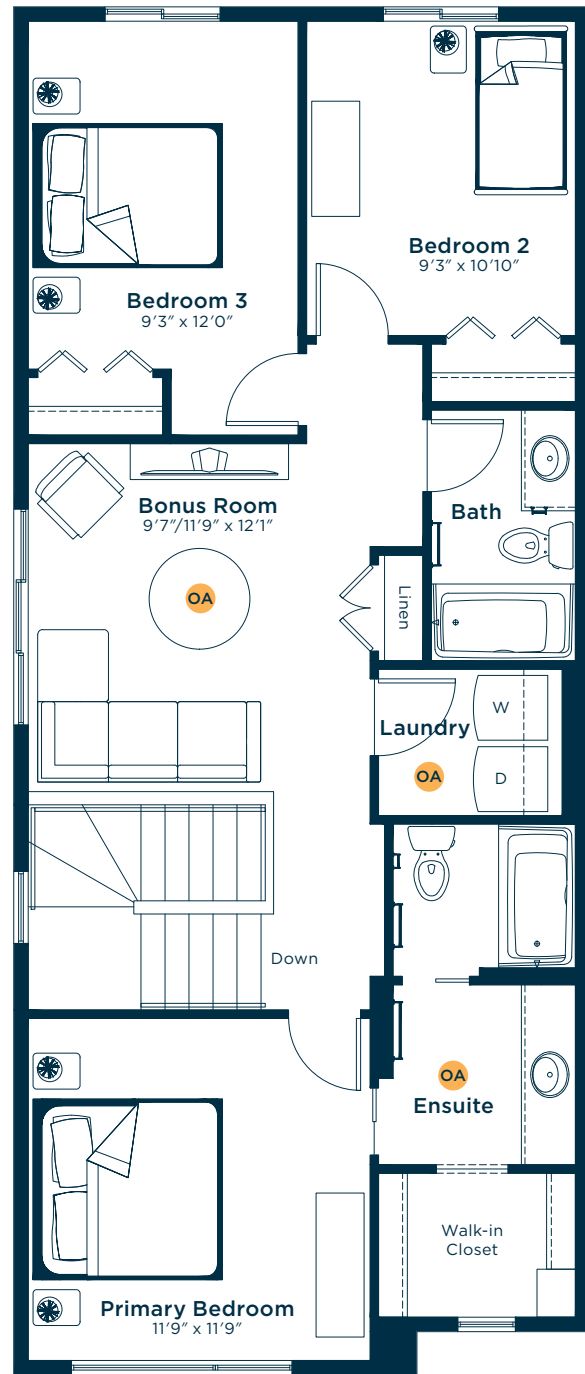
Meet the Harper

OA OPTIONS AVAILABLE

MAIN FLOOR 920 SQ.FT.

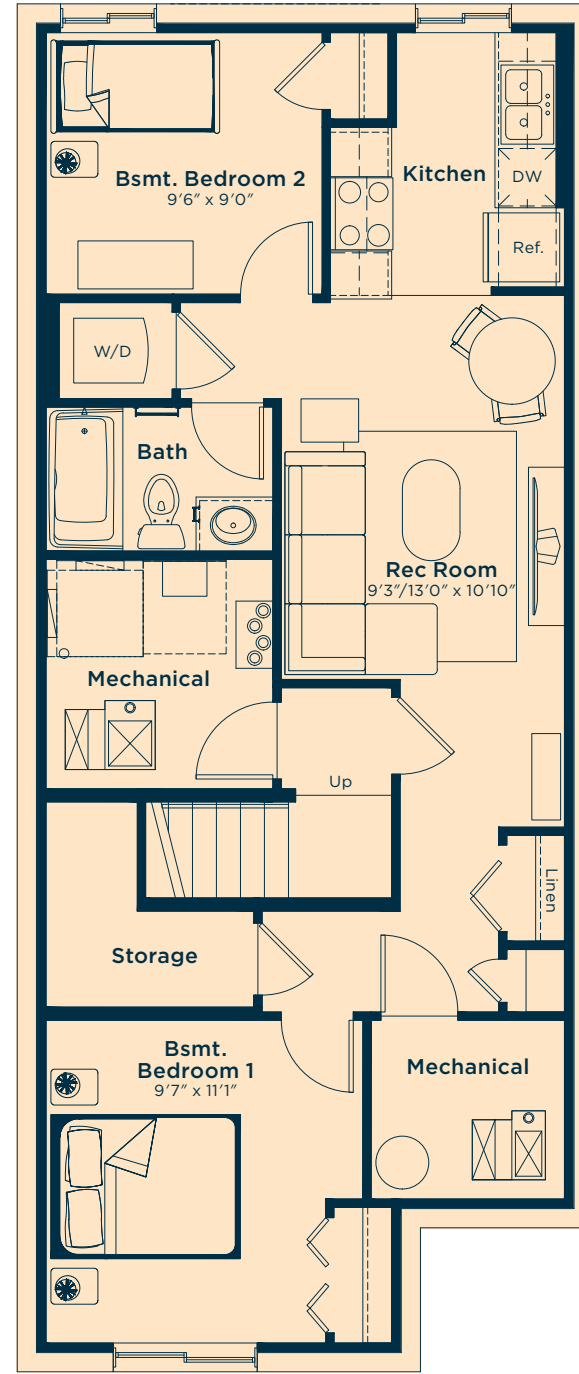


SECOND FLOOR 941 SQ.FT.

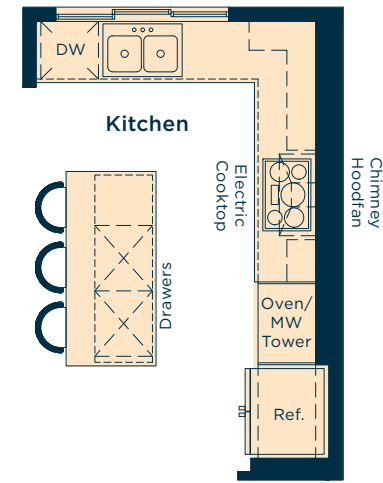


Ask us about these and many more Harper floor plan options.

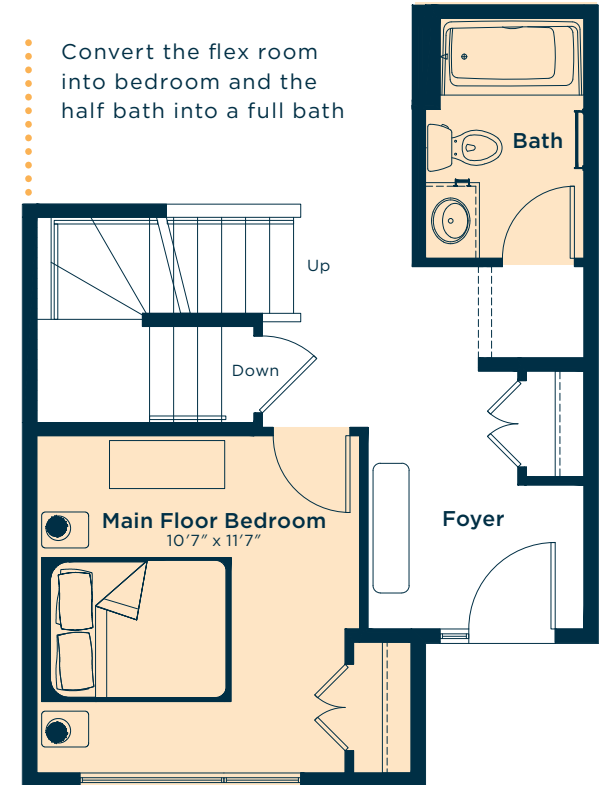
Develop a basement suite below with two bedrooms, kitchen, rec room and bath
669 SQ.FT.



Upgrade the kitchen to Level 1 for an extra pots & pans drawer, microwave/wall oven tower with trim kit, and electric cooktop with lower base cabinet



Convert the flex room into bedroom and the half bath into a full bath



Wait... there's more!

We also have options for fireplaces, rear decks, pot light arrangements, railing and much more!
Ask your Area Manager to find out more today.