



Meet the  
**Grayson**



FRONT GARAGE  
COLLECTION

**1775** SQ.  
FT.

**3** 

**2.5** 



**Striving to make buying  
a home simple, easier and  
more enjoyable.**

At Excel Homes, our mission is simple: to create a home-buying experience that delivers the most joy and value to our homeowners. For over 35 years, we've built over 15,000 homes in over 80+ communities and received over 75 awards for design and industry excellence. That experience has helped develop a refined homebuying experience that values your time, simplifies the big decisions, and minimizes any stress that can come with building a new home.

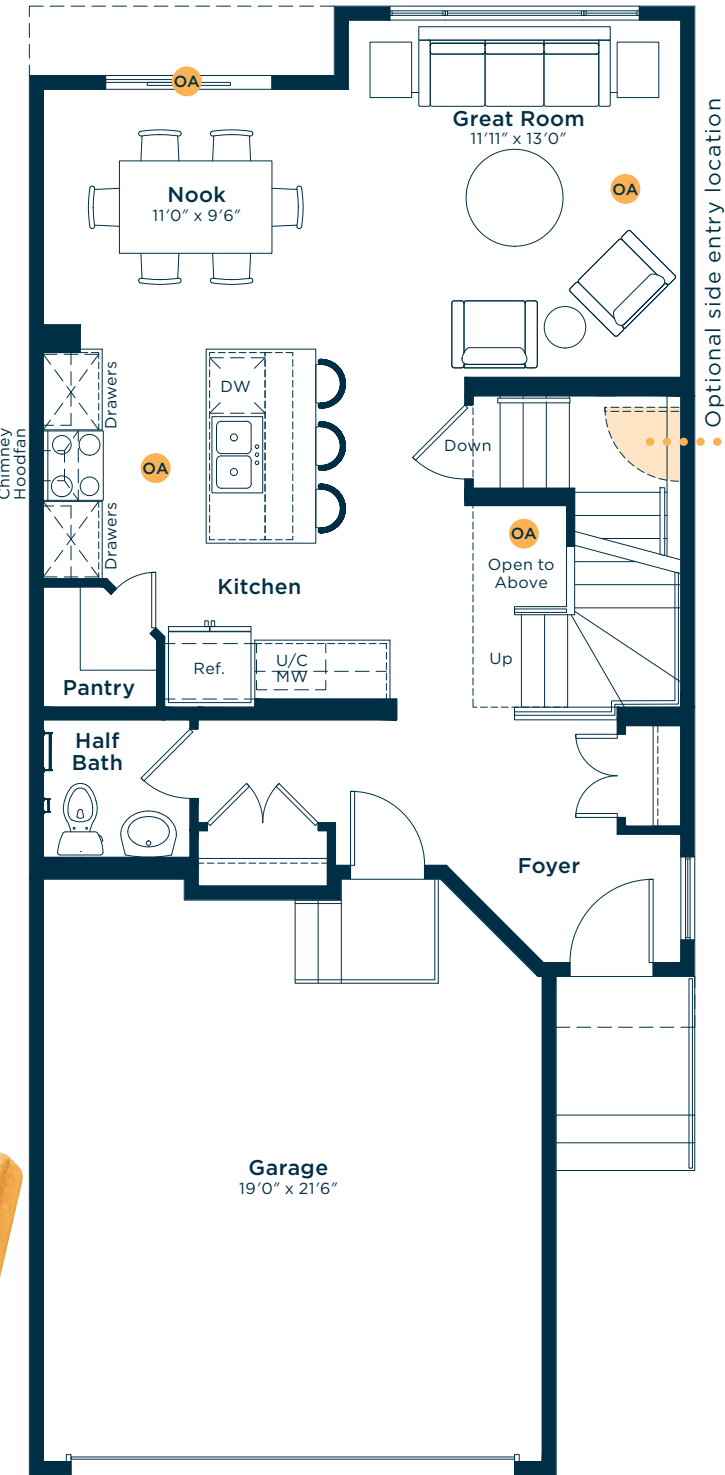
At Excel, the experience of building your home will be exciting, easy and memorable throughout the entire process.



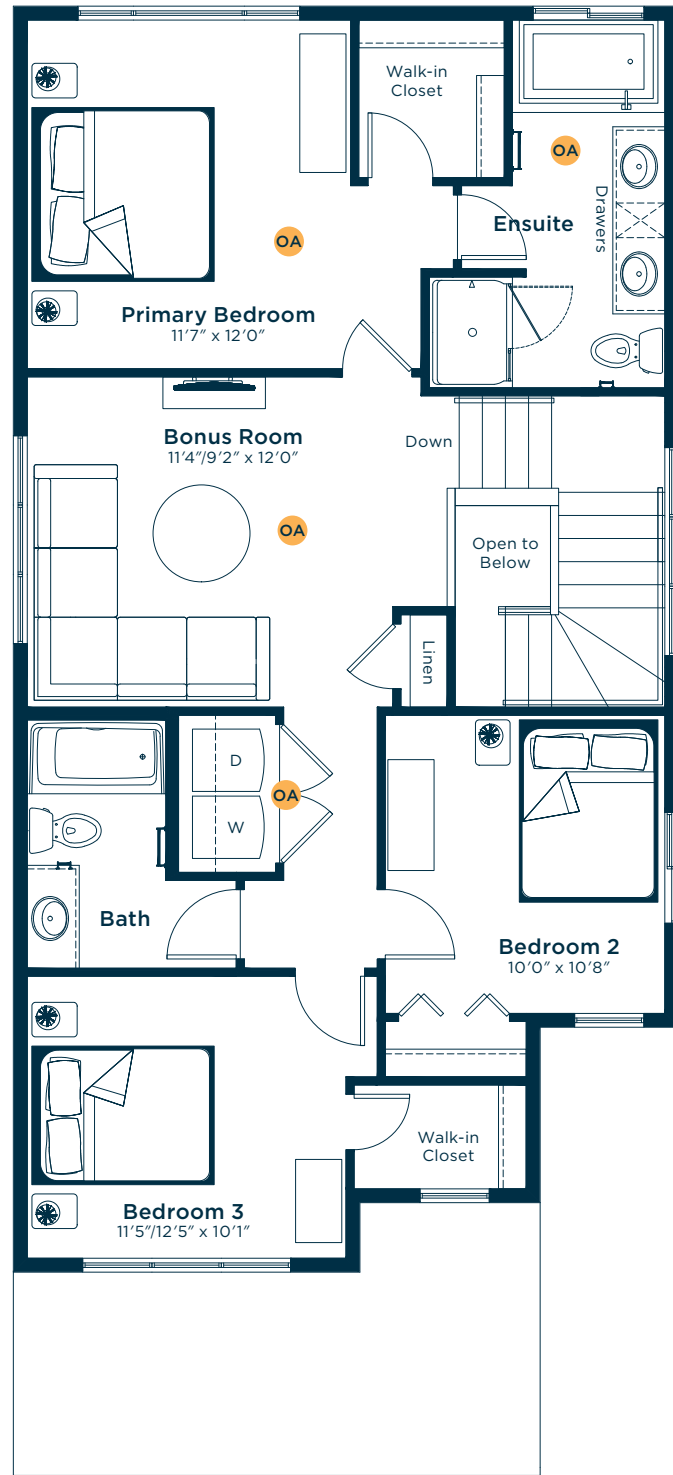
# Meet the Grayson

OA OPTIONS AVAILABLE

MAIN FLOOR  
759 SQ.FT.

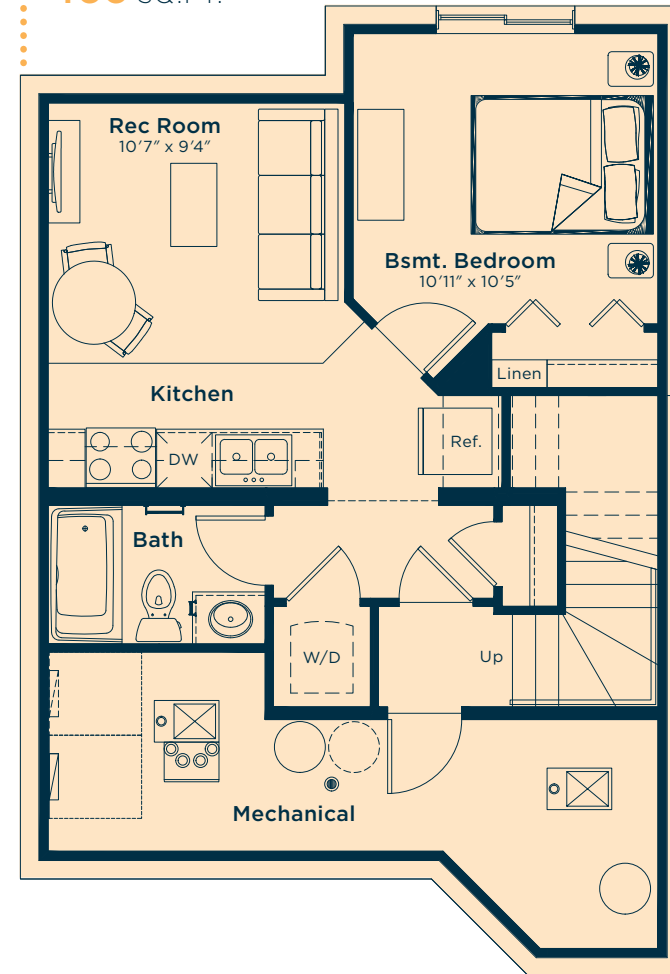


SECOND FLOOR  
1016 SQ.FT.

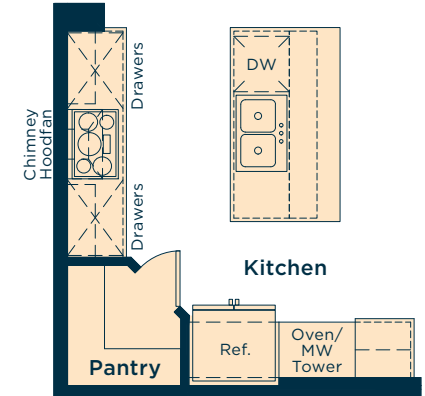


## Ask us about these and many more Grayson floor plan options.

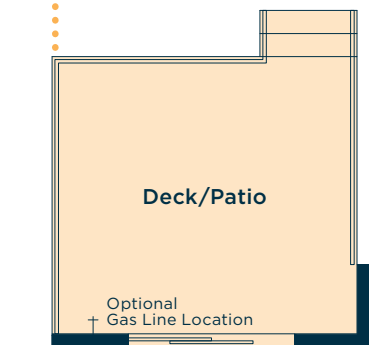
Develop the basement suite below with one bedroom, a kitchen, bedroom, rec room, laundry and bath  
466 SQ.FT.



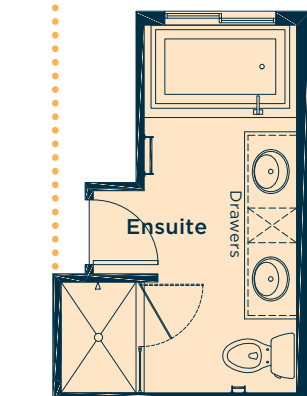
- Upgrade the kitchen to Level 1 for an extra pots & pans drawer, microwave/wall oven tower with trim kit, and electric cooktop with lower base cabinet



- Add a rear deck/patio with stairs to the backyard



- Upgrade the ensuite to Level 1 for a shower unit with tiled walls/ acrylic base/swinging door/ chrome frame and raised vanity height



## Wait... there's more!

- We also have options for fireplaces, pot light arrangements, laundry, vaulted ceilings, railing upgrades and much more! Ask your Area Manager to find out more today.