



Meet the Grayson



FRONT GARAGE
COLLECTION

1775

SQ.
FT.

3



2.5



**EXCEL
HOMES**

Striving to make buying
a home simple, easier and
more enjoyable.

At Excel Homes, our mission is simple: to create a home-buying experience that delivers the most joy and value to our homeowners. For over 35 years, we've built over 14,000 homes in over 80+ communities and received over 75 awards for design and industry excellence. That experience has helped develop a refined homebuying experience that values your time, simplifies the big decisions, and minimizes any stress that can come with building a new home.

At Excel, the experience of building your home will be exciting, easy and memorable throughout the entire process.



KINCENTRIC
Best Employer
NORTH AMERICA 2023

BILD
CALGARY HILL
AWARDS
WINNER

WINNER
AWARDS
OF EXCELLENCE
IN WESTERN
CANADA

BuiltGreen

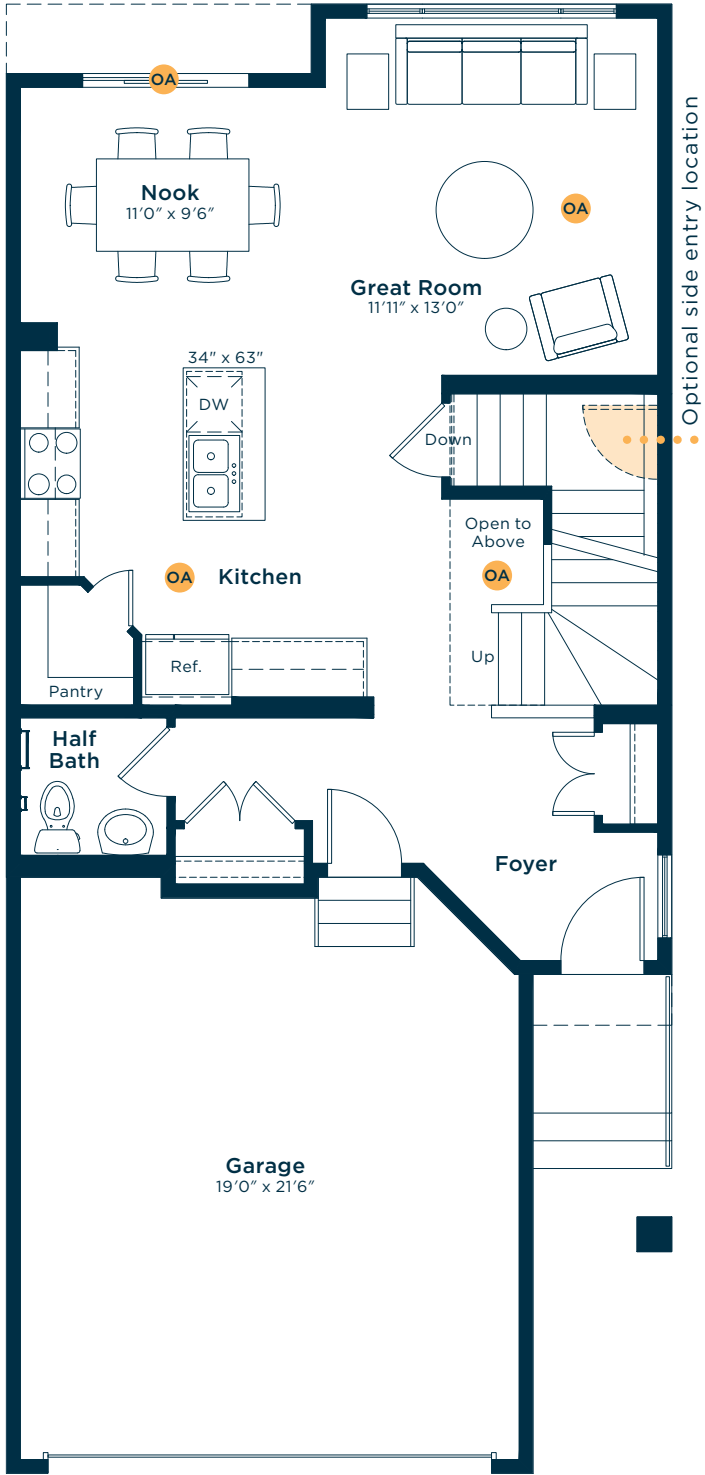
Avid
Ratings

ALBERTA
NEW HOME WARRANTY
PROGRAM

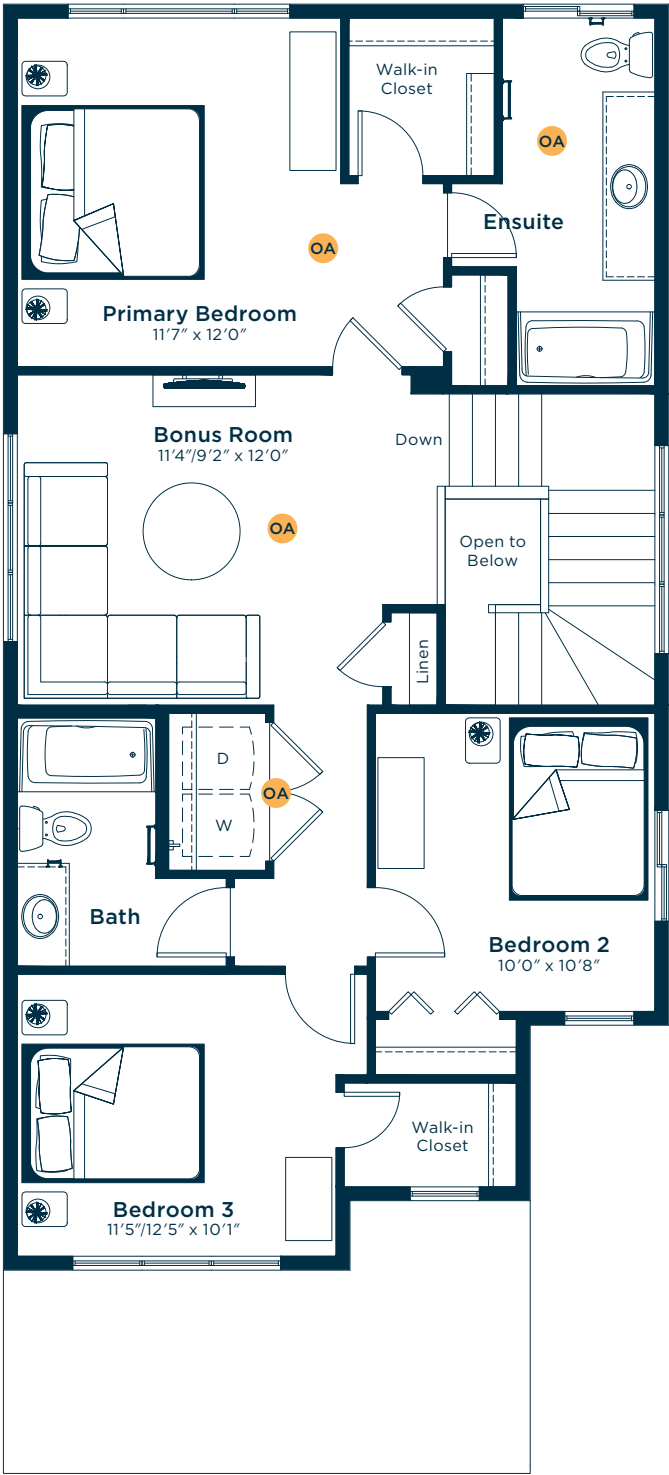
EXCELHOMES.CA Simplifying your journey home.

Meet the
Grayson

MAIN FLOOR
759 SQ.FT.

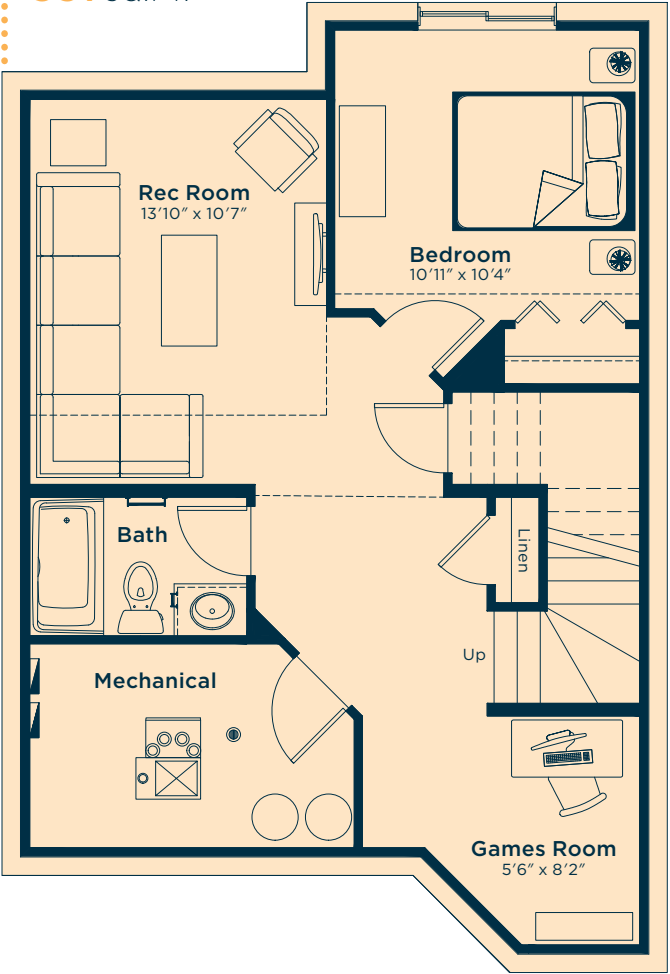


SECOND FLOOR
1016 SQ.FT.



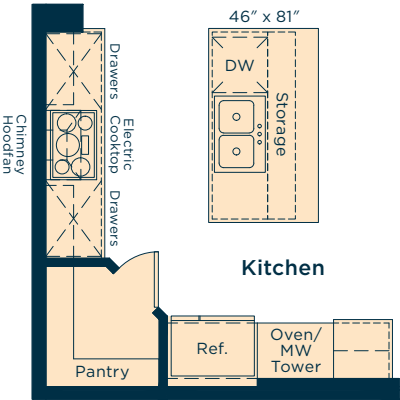
Ask us about these
and many more Grayson
floor plan options.

Develop the basement below with an
extra bedroom, rec room and bath
531 SQ.FT.

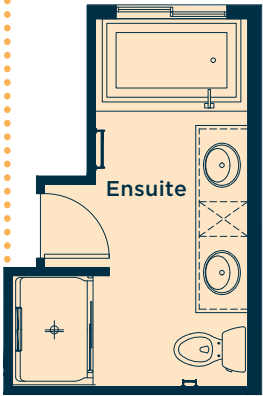


Wait... there's more!
We also have options for fireplaces, pot light
arrangements, laundry, vaulted ceilings,
railing upgrades and much more! Ask your
Area Manager to find out more today.

Upgrade the kitchen to Level 3
to include island, 42" upper cabinets,
pots and pans drawers, chimney-style
hoodfan, microwave tower and more



Upgrade the ensuite to Level 2
for dual sinks, large soaker tub,
raised vanity with bank of drawers,
fully tiled shower walls and more



Add a rear deck/patio with
stairs to the backyard

