



# Meet the Fleetwood



FRONT GARAGE  
COLLECTION

2136

SQ.  
FT.

3



2.5



EXCEL  
HOMES

Striving to make buying  
a home simple, easier and  
more enjoyable.

At Excel Homes, our mission is simple: to create a home-buying experience that delivers the most joy and value to our homeowners. For over 35 years, we've built over 14,000 homes in over 80+ communities and received over 75 awards for design and industry excellence. That experience has helped develop a refined homebuying experience that values your time, simplifies the big decisions, and minimizes any stress that can come with building a new home.

At Excel, the experience of building your home will be exciting, easy and memorable throughout the entire process.



KINCENTRIC  
Best Employer  
NORTH AMERICA 2023

BILD  
CALGARY  
AWARDS  
WINNER

WINNER  
AWARDS  
OF EXCELLENCE  
IN RESIDENTIAL  
CONSTRUCTION

BuiltGreen

Avid  
Ratings

ALBERTA  
NEW HOME  
WARRANTY  
PROGRAM

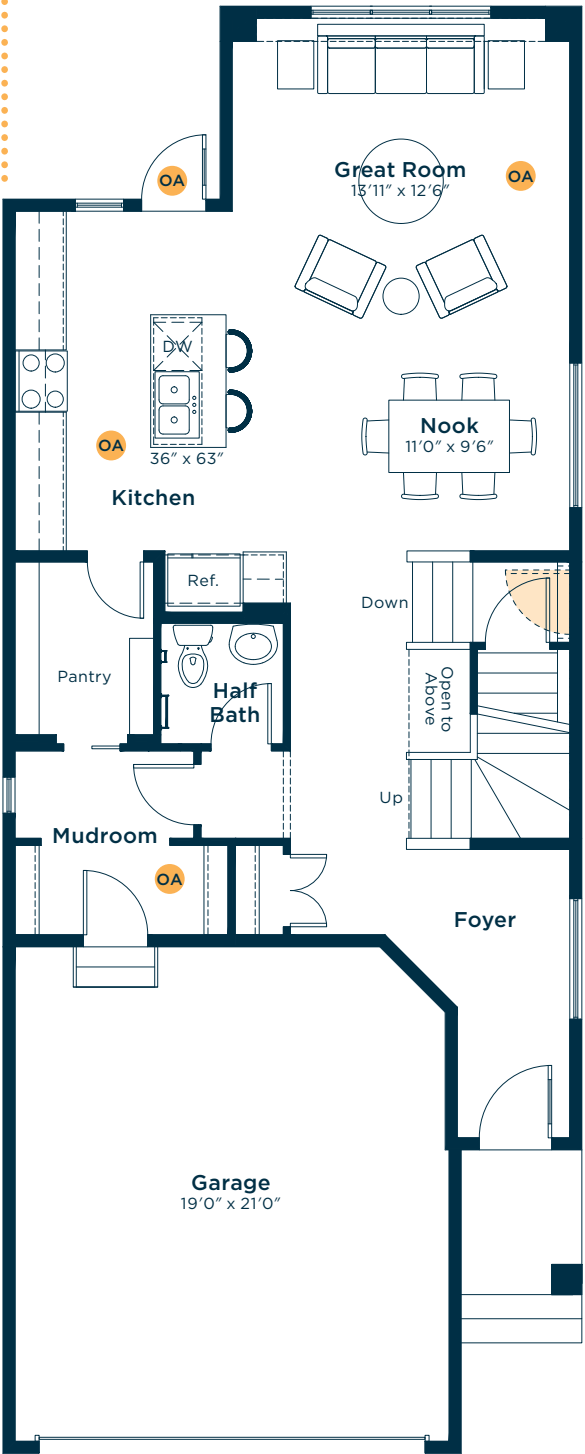
EXCELHOMES.CA

Simplifying your journey home.

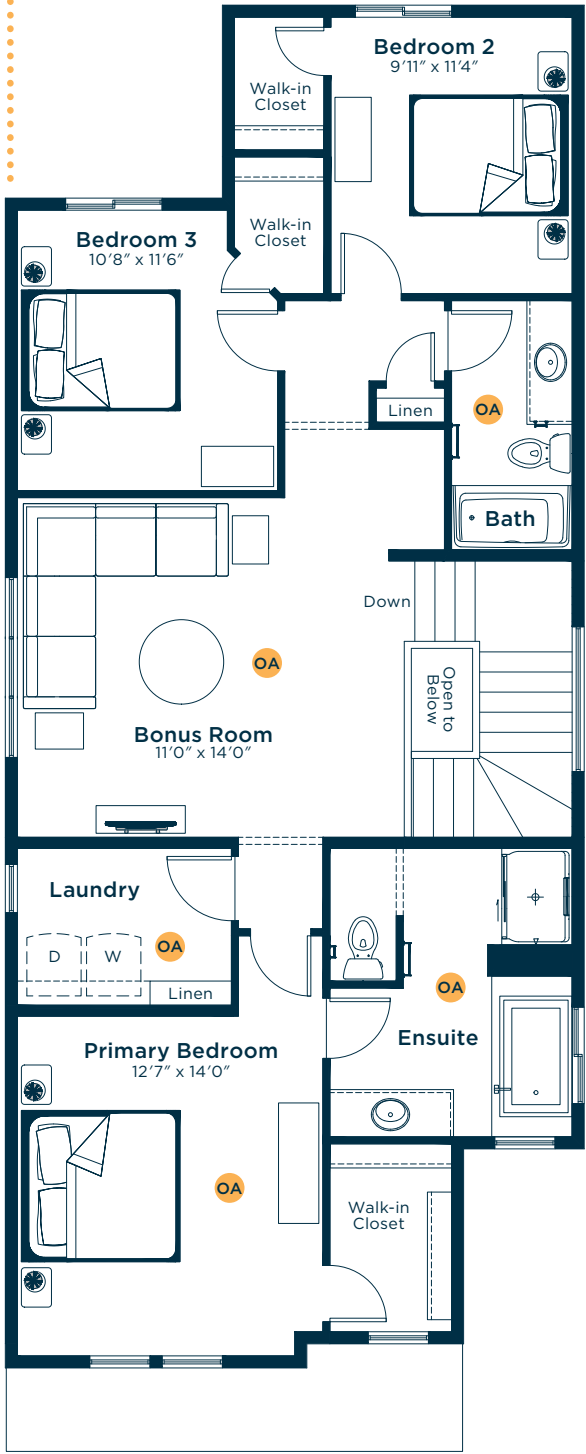


# Meet the Fleetwood

MAIN FLOOR  
915 SQ.FT.

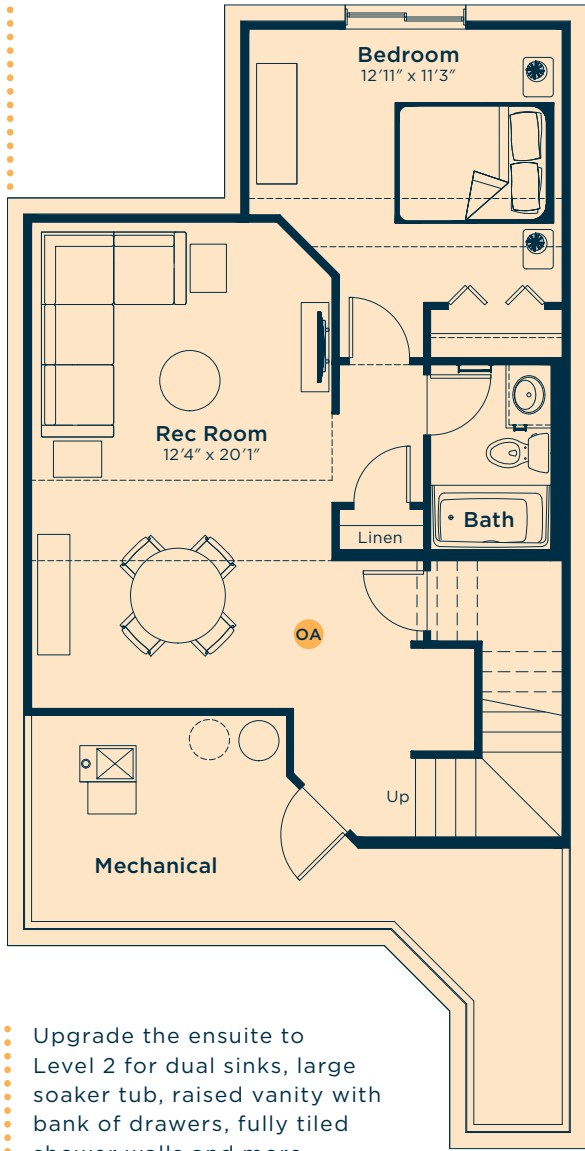


SECOND FLOOR  
1221 SQ.FT.

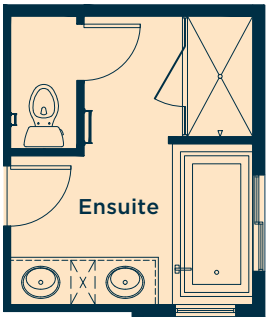


Ask us about these and many more Fleetwood floor plan options.

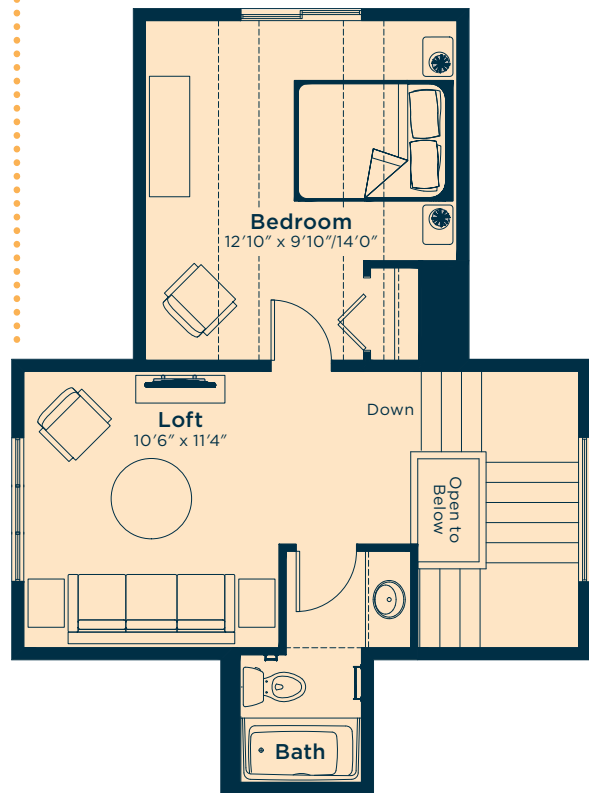
Develop the basement below with an extra bedroom, rec room and bath  
587 SQ.FT.



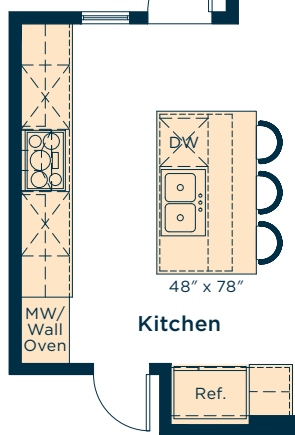
Upgrade the ensuite to Level 2 for dual sinks, large soaker tub, raised vanity with bank of drawers, fully tiled shower walls and more



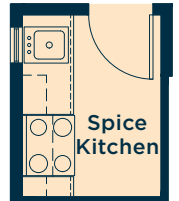
Add a loft level above the second floor  
526 SQ.FT. (dependent on community)



Upgrade the kitchen to Level 3 for a larger island, 42" upper cabinets, pots and pans drawers, chimney-style hoodfan, wall oven with built-in microwave tower and more



Convert the pantry area to a spice kitchen



Wait... there's more!

We also have options for fireplaces, rear decks, pot light arrangements, vaulted ceilings, railing and much more! Ask your Area Manager to find out more today.