



Meet the Edge



TOWNHOME
COLLECTION

1630 SQ.
FT.

3



2.5



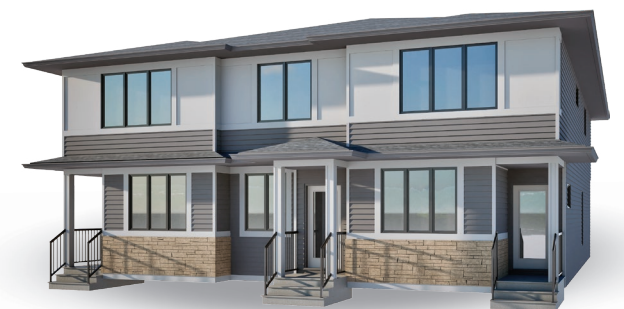
EXCEL
HOMES



Striving to make buying a home simple, easier and more enjoyable.

At Excel Homes, our mission is simple: to create a home-buying experience that delivers the most joy and value to our homeowners. For over 35 years, we've built over 15,000 homes in over 80+ communities and received over 75 awards for design and industry excellence. That experience has helped develop a refined homebuying experience that values your time, simplifies the big decisions, and minimizes any stress that can come with building a new home.

At Excel, the experience of building your home will be exciting, easy and memorable throughout the entire process.

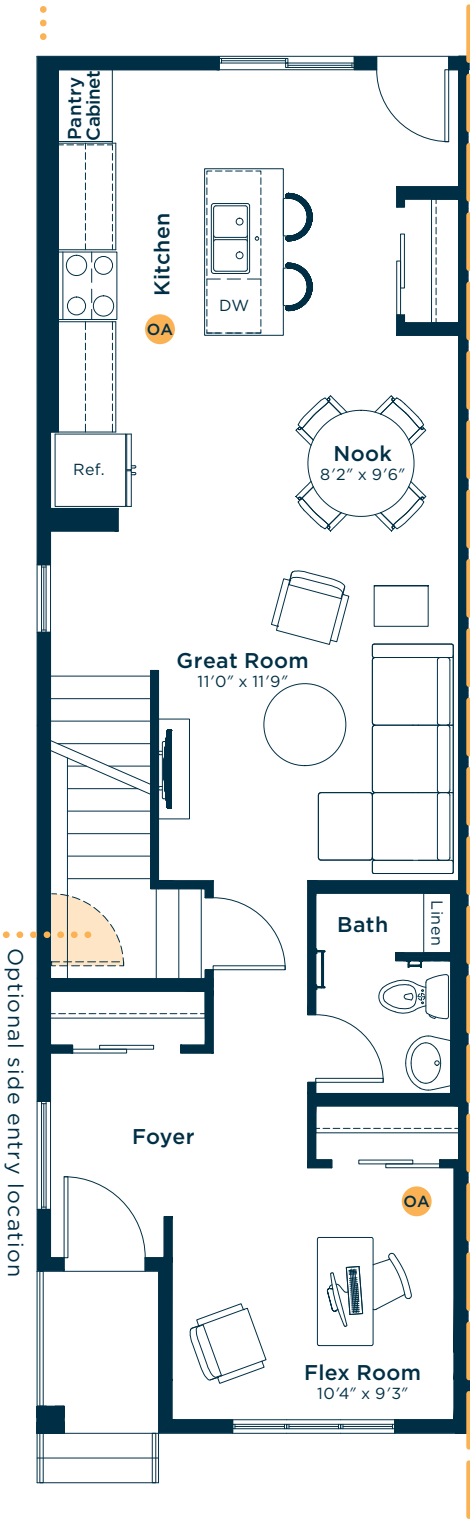


Mercer Best Employer
Canada 2025

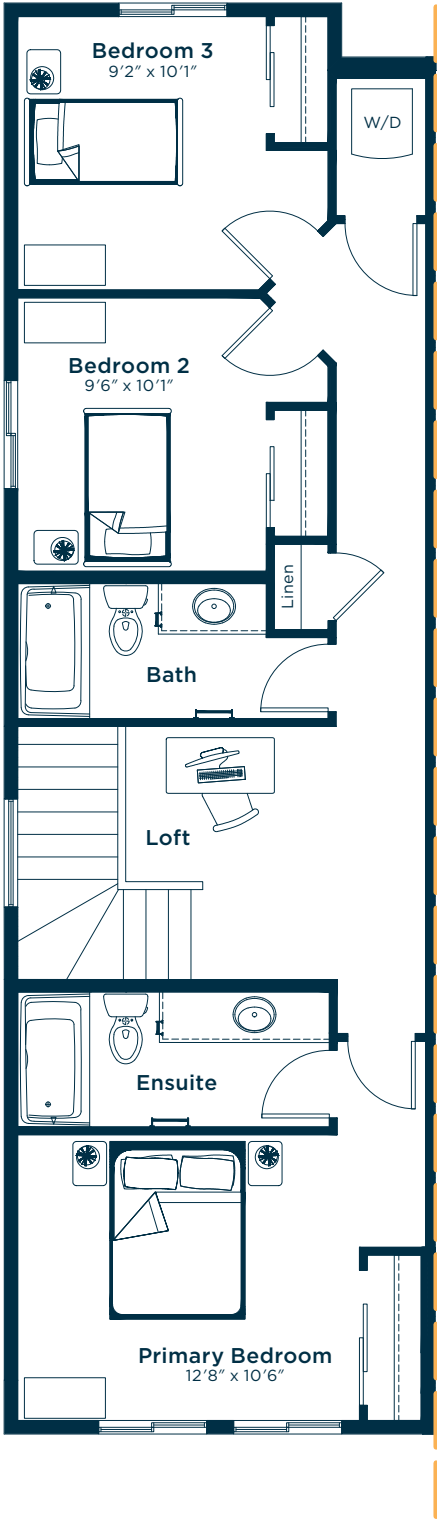
Meet the Edge

OA OPTIONS AVAILABLE

MAIN FLOOR
789 SQ.FT.

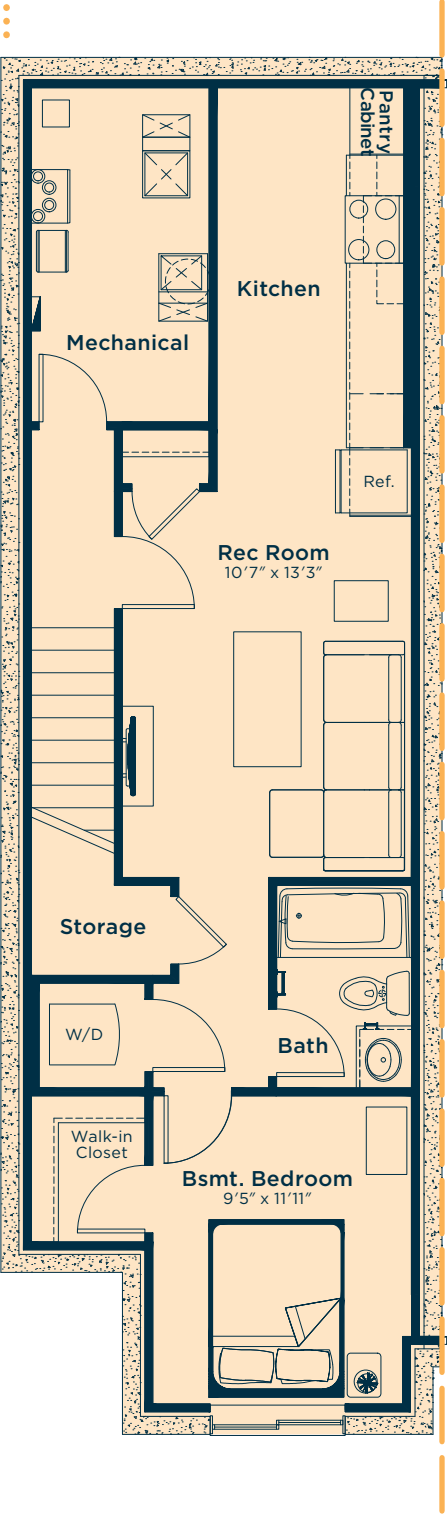


SECOND FLOOR
841 SQ.FT.

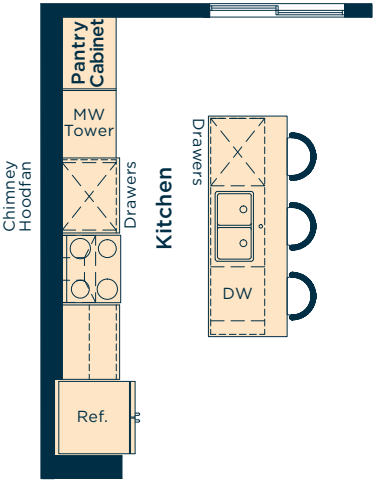


Ask us about these and many more Edge floor plan options.

Develop the basement suite below with a bedroom, rec room, kitchen and bath
575 SQ.FT.



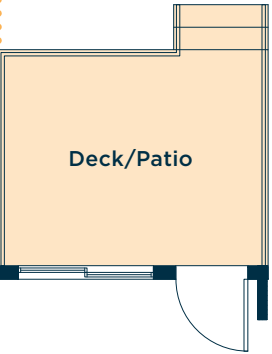
Upgrade the kitchen to Level 2 for a longer island, 42" upper cabinets, chimney-style hoodfan, pots and pans drawers, built-in microwave tower and more



Add a main floor bedroom in lieu of the flex room



Add a rear deck/patio on the main floor



Wait... there's more!

We also have options for railing, kitchen upgrades, basement upgrades and more! Ask your Area Manager to find out more today.