

Meet the  
**Creston**



LANED  
COLLECTION

**1780** SQ.  
FT.

**3**

**2.5**



**Striving to make buying a home  
simple, easier and more enjoyable.**

At Excel Homes, our mission is simple: to create a homebuying experience that delivers the most joy and value to our homeowners. Since we first began in 1988, we've built over 12,000 homes and received over 50 awards for design and industry excellence. That experience has helped develop a refined homebuying experience that values your time, simplifies the big decisions, and minimizes any stress that can come with building a new home.

At Excel, the experience of building your home will be exciting, easy and memorable throughout the entire process.

**PROUDLY SUPPORTING**



# Meet the Creston

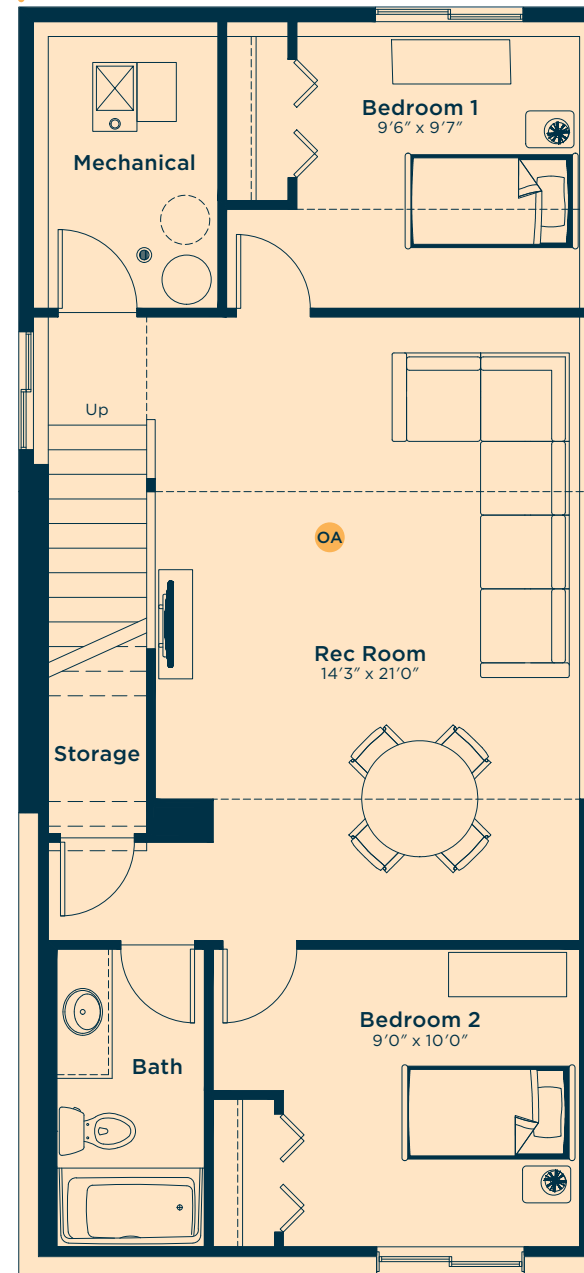
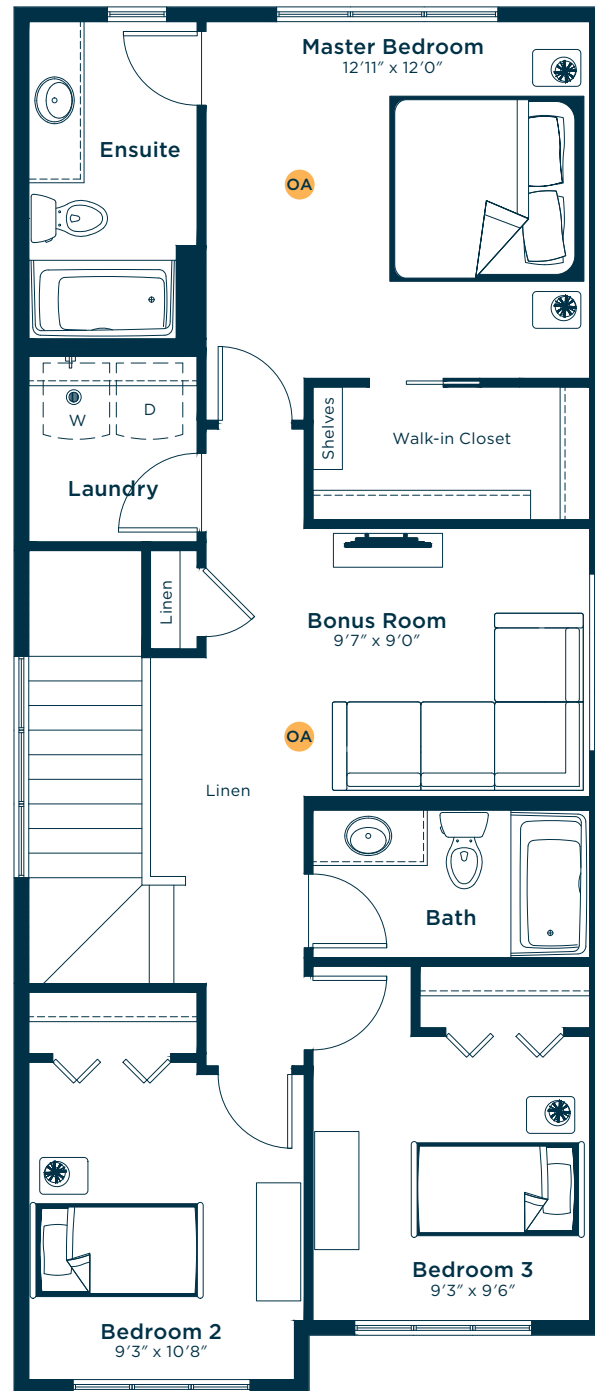
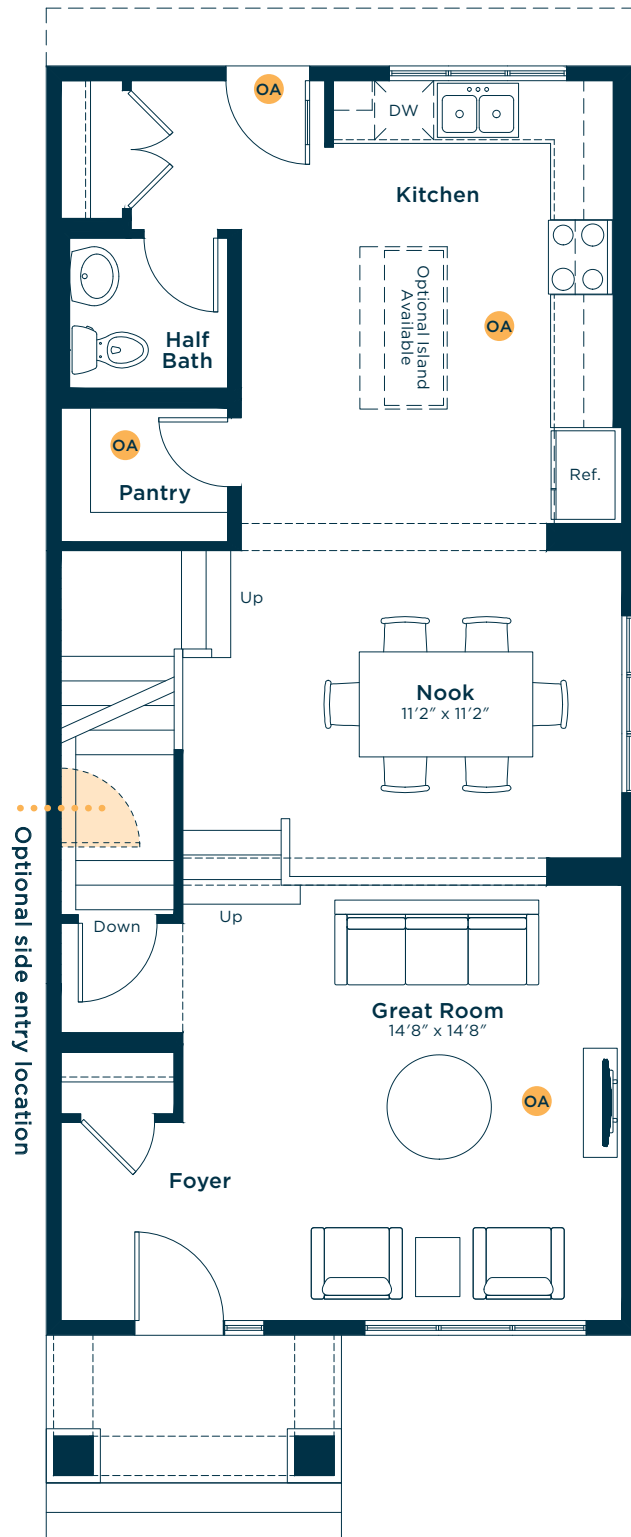
OA OPTIONS AVAILABLE

Ask us about these and many more Creston floor plan options.

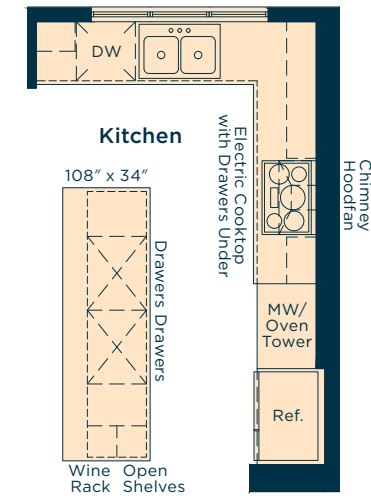
MAIN FLOOR  
860 SQ.FT.

SECOND FLOOR  
920 SQ.FT.

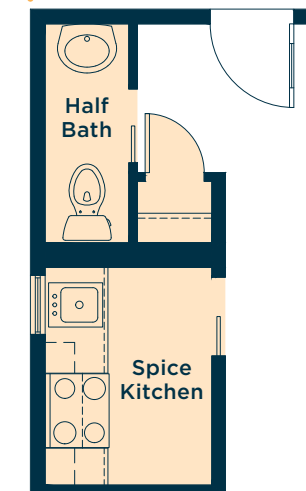
Develop the basement below with two extra bedrooms, rec room and bath  
483 SQ.FT.



- Upgrade the kitchen to Level 3 for a larger island, 42" upper cabinets, chimney-style hoodfan, built-in microwave wall oven and more



- Convert the pantry area to a spice kitchen (NOTE: Half Bath repositioned to accommodate)



## Wait... there's more!

- We also have options for fireplaces, pot light arrangements, railing, alternate basements and much more!
- Ask your Area Manager to find out more today.

- Add a rear deck and patio with stairs

