

Meet the Beaumont



FRONT GARAGE
COLLECTION

2242 SQ.
FT.

3



2.5



Striving to make buying a home simple, easier and more enjoyable.

At Excel Homes, our mission is simple: to create a home-buying experience that delivers the most joy and value to our homeowners. For over 35 years, we've built over 15,000 homes in over 80+ communities and received over 75 awards for design and industry excellence. That experience has helped develop a refined homebuying experience that values your time, simplifies the big decisions, and minimizes any stress that can come with building a new home.

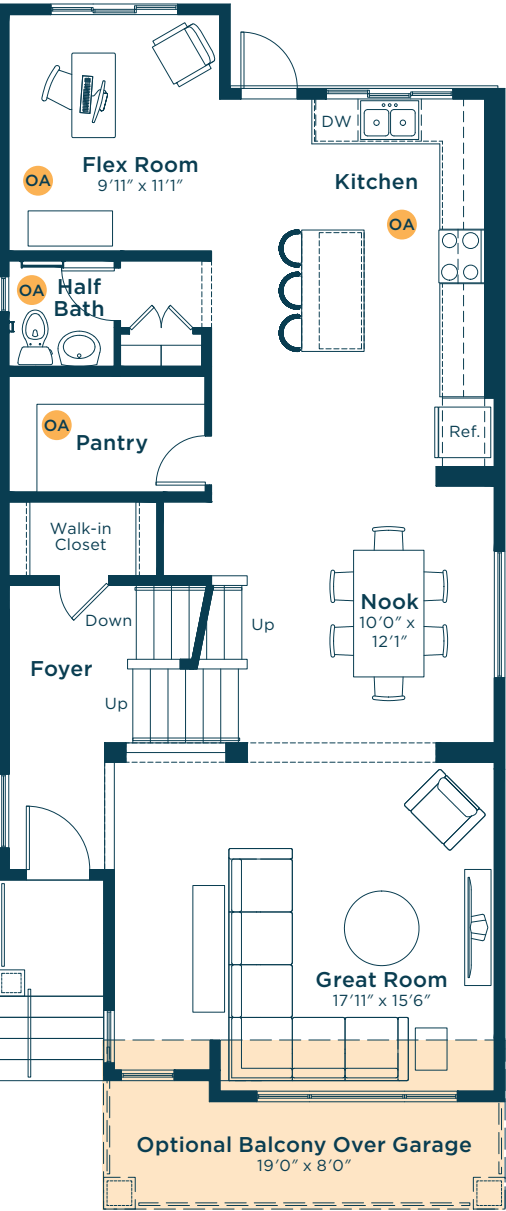
At Excel, the experience of building your home will be exciting, easy and memorable throughout the entire process.



Meet the
Beaumont

OA OPTIONS AVAILABLE

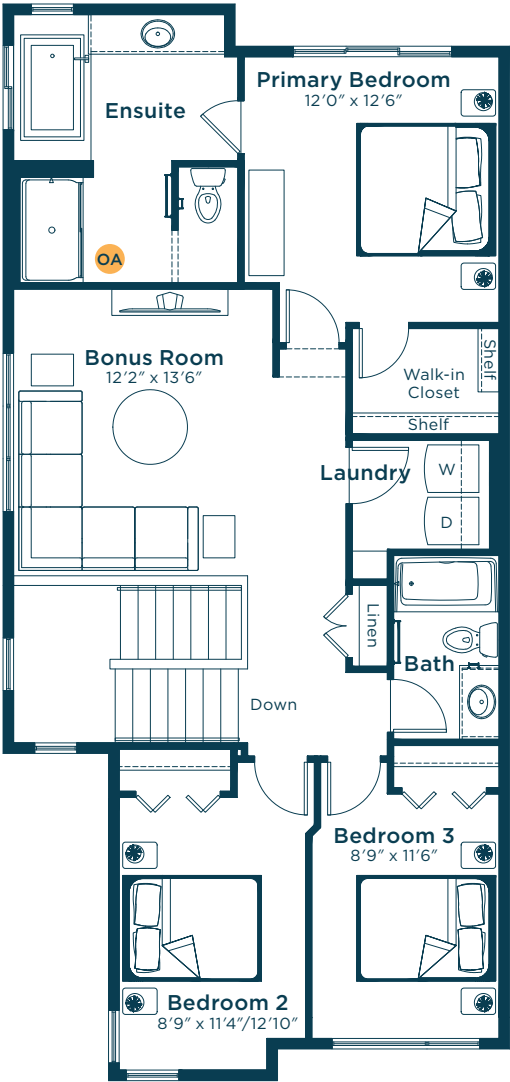
MAIN FLOOR
1138 SQ.FT.



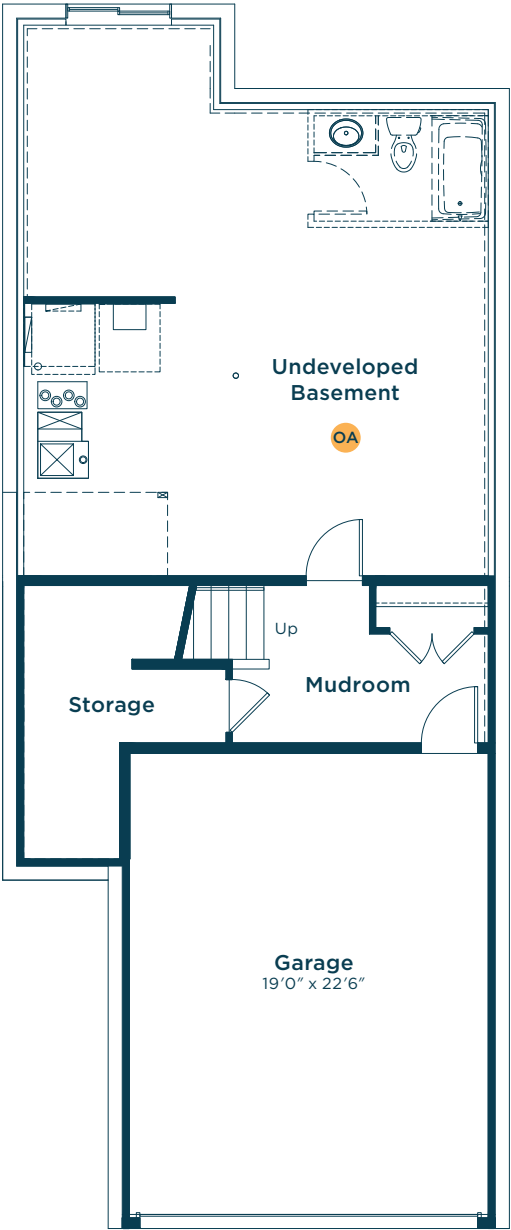
- Incorporate a balcony above the garage to provide an extra functional outdoor space

NOTE: Great room is resized to accommodate the balcony

SECOND FLOOR
1104 SQ.FT.

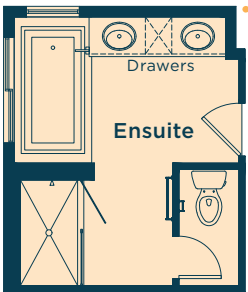
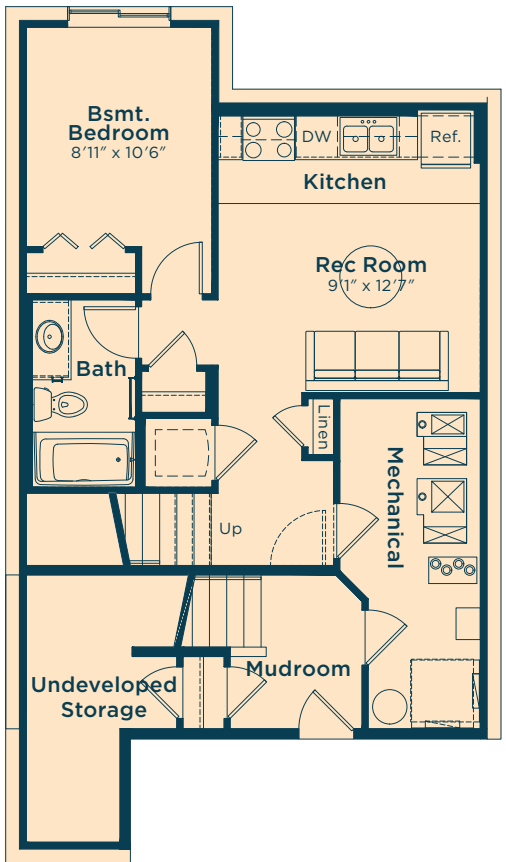


BASEMENT
118 SQ.FT.

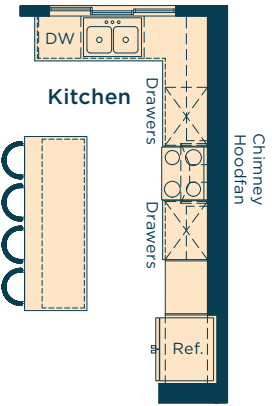


Ask us about these and many more Beaumont floor plan options.

Develop the one-bedroom basement suite below with a kitchen, bedroom, rec room, laundry and bath
528 SQ.FT.

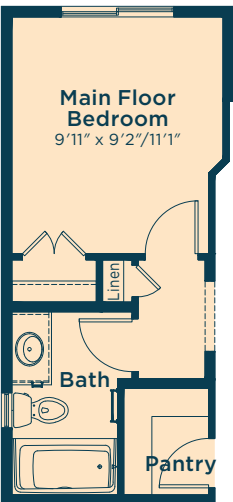


Upgrade the ensuite to Level 2 for dual sinks, large soaker tub, raised vanity with bank of drawers, fully tiled shower walls and more

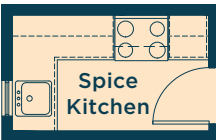


Upgrade the kitchen to Level 2 for a longer island, 42" upper cabinets, pots and pans drawers, chimney-style hoodfan, undercounter microwave and more

Convert the flex room to main floor bedroom with a full bath



Convert the pantry area to a spice kitchen



Wait... there's more!

We also have options for fireplaces, pot light arrangements, vaulted ceilings, railing and much more! Ask your Area Manager to find out more today.