



Meet the Ashford



DUPLEX
COLLECTION

1589 SQ.
FT.

3

2.5

**EXCEL
HOMES**



**Striving to make buying
a home simple, easier and
more enjoyable.**

At Excel Homes, our mission is simple: to create a home-buying experience that delivers the most joy and value to our homeowners. For over 35 years, we've built over 14,000 homes in over 80+ communities and received over 75 awards for design and industry excellence. That experience has helped develop a refined homebuying experience that values your time, simplifies the big decisions, and minimizes any stress that can come with building a new home.

At Excel, the experience of building your home will be exciting, easy and memorable throughout the entire process.



KINCENTRIC
Best Employer
NORTH AMERICA 2023

BILD
CALGARY TRI-LO
AWARDS
WINNER

WINNER
AWARDS
OF EXCELLENCE
IN WESTERN
CANADA

BuiltGreen

Avid
Ratings

ALBERTA
NEW HOME WARRANTY
PROGRAM

EXCELHOMES.CA

Simplifying your journey home.

Meet the Ashford

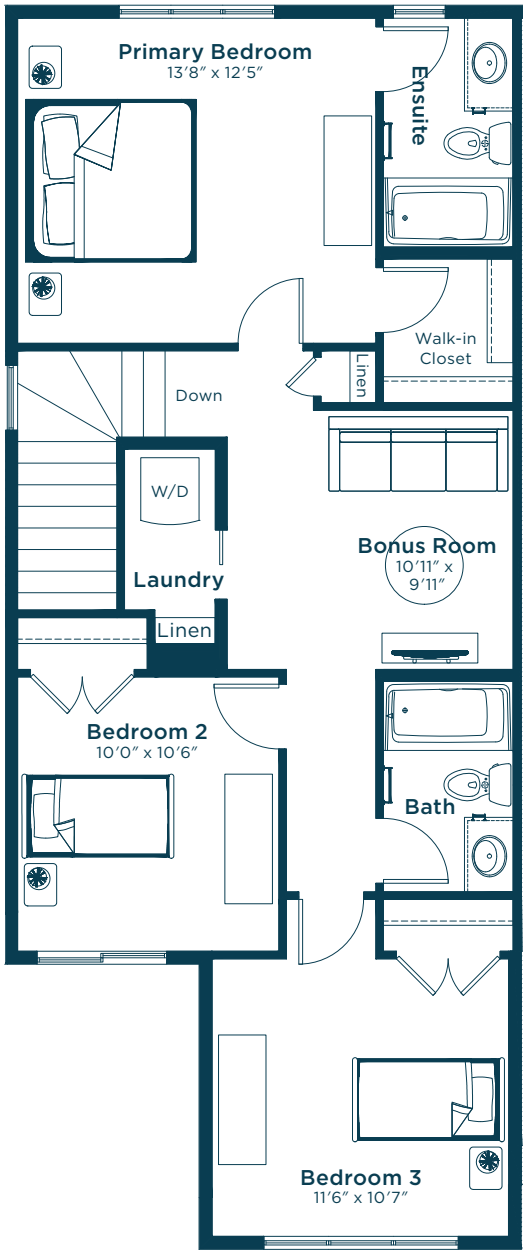
OA OPTIONS AVAILABLE

Ask us about these and many more Ashford floor plan options.

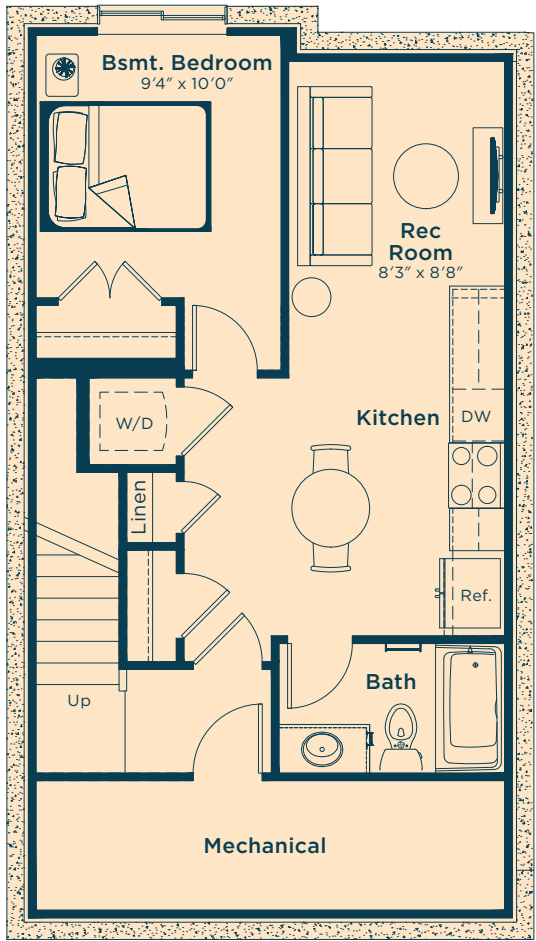
MAIN FLOOR
712 SQ.FT.



SECOND FLOOR
877 SQ.FT.

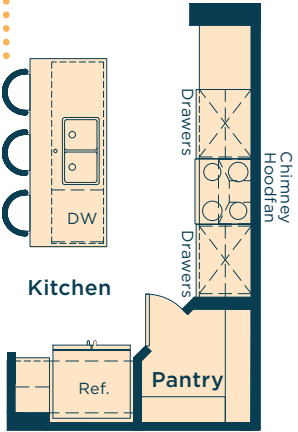


Develop the basement suite below with one bedroom, rec room, flex room, kitchen and bath
494 SQ.FT.

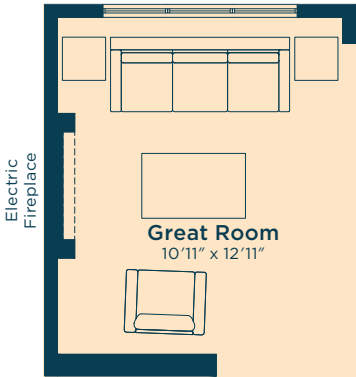


Wait... there's more!
We also have options for pot light arrangements, vaulted ceilings, railing and much more! Ask your Area Manager to find out more today.

Upgrade the kitchen to Level 2 for a larger island, 42" upper cabinets, chimney-style hoodfan, under counter built-in microwave and more



Add an electric fireplace to the great room



Add a rear deck/patio

